

Ice, fog, flooding and Covid...

...frogs next?

After a subdued Christmas, the plunge back into a third lockdown - with global reports of flooding, fire and the apparent breakdown of civil society in the USA, we could be forgiven for thinking that we are living through unprecedented times. But recall Mercutio's curse in Romeo & Juliet, "a plague on both your houses!" This was not an empty threat. Shakespeare himself was 'furloughed' from his London theatre many times, after the introduction of social distancing measures during outbreaks of bubonic plague. The Great Plague of 1665-6 killed 100,000 in London alone, almost a quarter of the population. Luckily we have something more on the horizon than the burning of rosemary and sage or sniffing an orange stuck with cloves - a vaccine. Many of you have had your jab, and slowly but surely the rest will

catch up. And, we also have our community. The village has pulled together throughout the last year and we will get through this - not unscathed, but hopefully proud of our response. The Community Help Team is still going strong, our pubs are serving takeaways and the Co-op has been a lifeline for many. A number of our non-essential businesses have had to close again, but we can all offer support by using them when they re-open. Soon the village will be awash with snowdrops and aconites and we'll see the first signs of Spring. In the meantime we must each play our own small part by staying safe and sticking to the rules. We know what they are, and however tedious they seem - just do it!

Linton News Team

Don't wait - get in touch!

TEN months on from the formation of Linton Community Help we are still dealing with issues around Covid. Although many of the immediate problems have been resolved, the longer-term impacts are if anything becoming more urgent and widespread. Children, young people and parents are trying to manage home learning; adults may be newly unemployed or dealing with job insecurity, and families may be struggling to survive on a reduced income. It is these people we want to reach out to this month - we have funding to support people with just that little extra to cover food, energy bills, new shoes for the children, or transport to appointments. We can also offer help with employment, training and money advice, and Reach Community Projects have a free confidential debt service. Last month the Linton News kindly called us heroes, but we are simply wanting to keep our village community a safe and happy place to be, so if you have fallen through the other safety nets please don't wait until it's too late. All enquiries are treated confidentially so contact us now: lintoncommunityhelp@gmail.com or 901123. Reach can be contacted on 01440 712950. We always need more people to help steer the group or offer advice and support around key areas. If you can give even an hour or so a week, please get in touch and help keep Linton caring and connected.



Shopping on the doorstep, just one of the ways LCHT can help

Yannick @ LCHT



Clockwise from top left: frozen plants on Rivey Hill, walkers surveying the flooded Granta, icicles forming on the sheds behind Camgrain and impassable roads in Hildersham. Photos: LNT and Tony Ellis

Return to lockdown... a headteacher's perspective

THE Christmas holiday was lovely. Quiet, but lovely. Yes, there was work to do for school, but when isn't there? And so Monday 4th January 2021 came. It was a markedly nice and gentle start to the year with pupils and staff delighted to see each other; and then, to everyone's surprise, the 8pm Boris announcement came... lockdown at least until the February half-term holiday. Although everyone across the country knew that COVID-19

rates were rising dramatically, confusion arose simply because on Sunday 3rd - the day before - the Prime Minister had announced that schools were 'safe'. From home at 8.30pm-ish on Monday night, how on earth was I supposed to be able to select who amongst the parents could be categorised as 'critical' workers? How were my deputy head and I able to inform other parents about the Teams live streaming provision? How could teachers

plan and create resources for pupils in and out of school for the next two weeks? Which further adjustments needed to be made to make the school environment extra-specially safe? Sanity came from the CEO of Anglian Learning Trust who called for a two-day pupil closure of the school, so that we could plan the provision and make preparations accordingly. After long days and sleepless nights, both the in-school and remote provision were cre-

ated. The pupils stoically rose to the challenge of independent learning; parents once again resumed their 'remote learning' teacher roles and all stakeholders and members of the Linton community rallied around the Linton Heights staff. On behalf of everyone at school, a huge 'thank you' to you all.

James Puxley
Head teacher
Linton Heights Junior
School

Granta Medical vaccine rollout

AT the time of writing, we are about to embark on the mammoth task of vaccinating our 44,000 patients with the COVID-19 vaccinations. Please be assured that everyone will be vaccinated. However, please remember that we have to vaccinate in accordance with Public Health England's priority list. Details of the priority list can be found on our website or at www.nhs.uk/conditions/coronavirus-covid-19/coronavirus-vaccination/coronavirus-vaccine/Due to the extreme demand for the vaccine around the country we may get deliveries at short notice, which means we may have to contact you at short notice.

Please note that you will NEVER be asked for payment for a COVID-19 vaccination and any texts, phone calls, or letters requesting payment or bank details should be ignored. Please continue to keep yourself and our community safe by adhering to national restrictions, social distancing, wearing of face masks and hand hygiene. We would like to thank you all for your patience and understanding whilst you wait for your vaccine during this unprecedented time.

Sandra East
Granta Communications &
Patient Liaison
627743
capccg.contact.gmp@nhs.net
www.grantamedicalpractices.co.uk

COVID-19 vaccination
First phase priority groups

Priority	Risk group
1	80 yrs Residents in a care home for older adults and Staff working in care homes for older adults
2	75 yrs All those 80 years of age and over and Health and social care workers
3	75 yrs All those 75 years of age and over
4	70 yrs All those 70 years of age and over and Clinically extremely vulnerable individuals (not including pregnant women and those under 18 years of age)
5	65 yrs All those 65 years of age and over
6	60 yrs Adults aged 18 to 65 years in an at-risk group*
7	60 yrs All those 60 years of age and over
8	55 yrs All those 55 years of age and over
9	50 yrs All those 50 years of age and over
10	50 yrs Rest of the population (to be determined)

* Based on those with underlying long-term or chronic conditions, such as heart problems, respiratory conditions, kidney problems, neurological conditions, diabetes, cancer, or treatment such as IVF induction, steroid medication, chemotherapy or radiotherapy. Organ transplant recipients, those with severe mental health problems, those with an organ transplant, those with a stroke or a transient ischaemic attack (TIA), a neurological or mental health condition, a severe or prolonged learning disability, or a problem with your vision, up until you are 65 years, or you have had your 50th birthday and are currently receiving 80 and above, or are currently receiving 80 and above.

© COVID-19 Immunisation
Enjoy the Protect Journey

A winter warming soup to raise spirits through lockdown

THIS soup is very simple to make and uses readily available plant based ingredients so is suitable for anyone giving Veganuary a go. Try it on quiet days when you need a gentle caring hug as it is highly restorative! Stock cubes are a brilliant way of making the required vegetable stock but the flavour of them can differ enormously between brands – it's worth trying different ones to find your favourite. Low salt options are excellent as you are able to adjust the seasoning to your taste.

Carrot and celeriac soup – makes four large portions

1 tbsp vegetable oil
1 large onion
2 peeled carrots – approx. 250g
2 peeled medium potatoes – approx. 250g
½ peeled celeriac – approx. 250g
½ heaped tsp cumin seeds
1 heaped tsp caraway seeds
1 ½ litres vegetable stock

1. Dice all the vegetables into smallish chunks (approx. 1.5 – 2cm)
2. Gently fry them, along with the cumin and caraway seeds, in a large saucepan, for 5 minutes. Try not to let them brown.
3. Add the vegetable stock and simmer for 25 minutes.
4. Let it cool a little before whizzing it until smooth, with a stick blender or food processor.
5. Check the seasoning adding black pepper and salt if required.
6. Reheat and enjoy with your favourite bread.

Linton News Team

Scouting online for now

LINTON 1st Scouts are now all online for the time being, but we have plans to proceed to outdoor face to face meetings as soon as the restrictions and weather both allow. Thanks once again must be given to the children and parents for sticking with us over a challenging year, and especially to the leaders (Barry and Stewart) and their helpers for constantly being able to provide great online sessions for the children. As a parent, I have heard that the online sessions have been "much more fun than I thought" (quote from my son, a Cub.) As we look forward with more hope towards the warmer months, Scouting will be starting again. We are really keen to have more helpers, and would like to train up a couple more Leaders/Assistants for the Section. If you can spare a couple of hours a week, would like to help out in the community, and would like some free training (all training is provided free of charge by the Scouts), then please get in touch.

Ed Groenhart
Chair, 1st Linton Scouts
660493
edgroenhart@hotmail.com

News from St. Mary's

AS I write, we are allowed to keep the church open for private prayer and reflection. In the first lockdown many people felt that the complete closure of churches was particularly cruel, just when so many felt the need to turn to places where many generations had brought their hopes and fears to God in national emergencies and personal stress. So I'm glad that we can go on offering this opportunity now. However, we ask anyone who comes to St Mary's for this purpose to respect Covid precautions meticulously. Services in church also remain legal in England. However, in view of the current high infection rate our bishops have asked us to consider seriously whether they are advisable. Our calling is to be welcoming and friendly, and chatting before and after services is a habit – a good habit – but one which can be dangerous just now. It's easy

to forget how large the 'social distance' should be between us, and to stand too close to someone we're chatting with, especially when we're wearing masks and some are hard of hearing! So, with heavy hearts, we at St Mary's have decided to suspend services in church for the time being. We are putting services on Zoom www.stmaryslinton.org.uk and also livestreaming them on St Mary's Facebook page. We'd also gladly deliver you a service sheet each week for reading through at home. Just ask. Listen out for bells each Sunday, just before 10am, to invite you to join in prayer. Be part of worship with St Mary's in one of these ways, until we can meet again safely in person!

Maggie Guite
Rector
rector@stmaryslinton.org.uk,
890273

New year fun and games

No speaker this month. Instead, several members joined in an enjoyable social evening on zoom. Our president, Shelley Ray, read out a piece to welcome in 2021. There was some discussion about the Coronavirus vaccine, with a few members saying they had already had theirs. Shelley read out the resolutions to be voted on, the winner going forward to the AGM in the summer. Sue Smales set up a polling form on screen for us to vote anonymously. The 2 resolutions with equal votes were 'A call to increase awareness of the subtle signs of ovarian cancer' and 'Protect your nature space to create wildlife-friendly communities'. The WI resolutions are very influential with the Government. We all participated in a game of *Would I Lie To You* modelled on the TV panel show. Three things other members did not know about you, one of which was a lie. We found out someone had spent half an hour talking to Princess Anne for the Osteoporosis Society. Liz Cox gave the answers to the bird quiz which she had posted earlier to members. Bunting was the answer to the question 'flags', blue tit to 'cold breast', and 'hobby' to 'pastime'. On 2nd February we have Brigitta Laurent from Cambridge Council with a talk entitled '*Which Bin – Waste Management*' and on 2nd March there will be a talk on Victorian etiquette called '*Manners Please Dearest*' by David Allen. Ladies, if you would like to join us on Zoom for either of these you will be most welcome and will have a very entertaining evening. Look out for the posters on the village notice boards at the corner of Symonds Lane and outside the village hall for the contact details.

Sally Proberts (891021)

theWI
INSPIRING WOMEN

Can you help improve cancer services at Addenbrooke's Hospital?

SINCE being diagnosed with breast cancer at Addenbrookes in 2016, I have been involved with its Cancer Patients Partnership Group (CPPG). This group enables the patient, carer and family voice to be heard in the planning and provision of cancer services at the hospital. Cancer doctors and nurses know many things that patients don't know; but we, the patients & families, know things that doctors and nurses don't know unless they have also had cancer. This involvement of patients from planning through to implementation of services is known as co-production. The group has been instrumental in helping to plan the refurbishment of the Oncology Outpatients clinic area,



A CPPG meeting (pre covid!) gets underway

encouraging doctors to write their letters to us directly, with a copy to our GP, rather than the other way round, creating and taking part in a video to introduce the idea of co-production to all in the Cancer Directorate, and planning for the new cancer research hospital amongst other initiatives. The agenda of the CPPG is driven by a committee of around 20 people, who meet (currently by digital means) four to six times a year. In addition, there is a wider group who can opt to be on a variety of sub-groups according to their particular interests and the time they are able to commit, or they can simply feedback via email. Currently we are concerned that the membership of the group is not sufficiently diverse, in terms of ethnicity, age and sexual orientation, to truly represent cancer patients at Addenbrooke's. If you or a loved one have experience of being treated for cancer at Addenbrooke's, and feel that your involvement would increase diversity in the CPPG, we would love to hear from you. For more information contact Lenja Bell on cppg@addenbrookes.nhs.uk or 07729 105550, or see: www.cuh.nhs.uk/our-services/cancer-services/cancer-support-services/addenbrookes-cancer-patient-partnership-group/

Helene Judge

Join Linton Free Church online

LINTON Free Church are continuing to meet online on Zoom for both their main Sunday morning service and also all their other children, family and mid-week groups. It's a great way to connect with a thriving local community. All are welcome.

Visit:
www.lintonfreechurch.org.uk/online for more information.

Alistair Wood

Don't forget to tell our advertisers where you found them!

Bentens
Accountants and Tax Advisors

Abbey House, 51 High Street
Saffron Walden

01799 523053 www.bentens.co.uk

- 24 hour emergency service
- Boiler breakdown and servicing
- Boiler upgrade

KA PLUMBING & HEATING

Office: 01223 890554
Mobile: 07890 576608
kaplumbingheating@hotmail.co.uk

Vailant
Approved Installer

G. DYE & SONS
GENERAL BUILDERS,
GROUNDWORK & MAINTENANCE,
CONSERVATORIES & UPVC WINDOWS, KITCHEN & BATHROOM REITS

ALSO INTERIOR & EXTERIOR DECORATING
REFERENCES AVAILABLE

For enquiries please call
Mobile: 07961 342887
Tel: 01223 892089
georgedy378@btconnect.com

Free Estimates

THE DOG & DUCK
WHATSAPP: 07932993433
OPEN: WEDNESDAY, FRIDAY & SATURDAY

THE SHED SHOP IS OPEN
OFFERING DAY TO DAY ESSENTIALS, BUTCHERS MEAT & FRESH VEGETABLES

POP IN OR ORDER ON OUR ONLINE STORE FOR COLLECTION OR DELIVERY

TAKEAWAY FOOD
TAKEAWAY FOOD IS AVAILABLE TO ORDER VIA OUR ONLINE STORE
WE CURRENTLY HAVE 2 MENU OPTIONS

DINE AT HOME MENU
(ONLY AVAILABLE ON FRIDAY/SATURDAY EVENINGS)

PUB GRUB MENU
(AVAILABLE LUNCH & EVENING FRIDAY/SATURDAY)

FISH & CHIPS WEDNESDAYS
FRESH BEER BATTERED HADDOCK, CHIPS, PEAS & TARTARE SAUCE
(PUB GRUB & PREMIUM MENU NOT AVAILABLE)

TO ORDER ON OUR ONLINE STORE, VISIT:
WWW.DOGDUCKSHOP.COM

CHECK OUT OUR WEBSITE FOR NEWS, UPDATES & MENUS.
WWW.DOGANDDUCK-LINTON.CO.UK

The Darryl Nantais Gallery
Fine Art, Framing & Restoration

Brian Seymour Darryl Nantais Magdalena Morey

We offer a wide selection of artwork, contemporary & traditional, local & international, including paintings, prints, ceramics, glassware, sculptures & jewellery. The Gallery also offers bespoke framing, picture restoration and cleaning.

Proprietor: Kurt Bachhurst
59 High Street, Linton, Cambridge CB21 4HS
01223 891289 - www.linton59.co.uk
Find, follow & like us on Facebook & Instagram for regular news updates
Tuesday to Saturday 10am to 4pm

Readers write...

Post and email addresses and deadline for letters are on this page. All letters for publication must have a full name, address or phone number to enable us to check authenticity. Letters may be edited. Opinions are not necessarily those of the Linton News. Letters can not be published anonymously, but names and addresses may be withheld if requested.

OUR THANKS

Dear Editor

Many of us were sad to learn that Dr Roger Bertram and his family have left Linton House, his family home, in Linton High Street, for pastures new. He simply slipped away without us having a chance to wish him well or thank him for all he had done for the residents of Linton and district. Many of us are grateful to Dr Bertram for all the care and concern for our health he has shown, together with his partners, past and present, to the residents of Linton and the surrounding area for many years. We also thank him, for his wise counselling and the friendship he has shown to us. I have known Dr Bertram and his family all my life and will remember his late parents and his brothers as they grew up in Linton. I would describe him as a true English Gentleman and trust he and his family are happily settled in their new home and send them our best wishes for 2021.

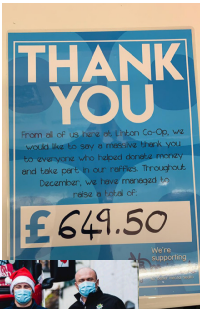
Rothgar and Susan Paintin and family.

Dear Editor

I work at the Co-op in Linton and am responsible for co-ordinating charitable activities on behalf of our nominated charity, 'Mind'. The charity offers support to those with mental health issues - a vital resource during the pandemic. I wanted to say a big thank you to everyone who supported our fundraising day in December with the magic elves from the fire station. Money raised on the day helped to achieve our terrific December total of almost £650. I'm hoping to arrange more activities so watch this space, and if you have any ideas for fundraising please ask for me at the co-op.



Christine Webster



Hildersham jam stall breaks records



Jill by the jam stall, a Hildersham institution

IN December, we sent £320 to EACH, making a grand total of £1121 donated in 2020. This is our best effort to date, being almost double the amount raised in 2019. Our efforts came to the attention of EACH Fundraising and we're pleased and proud to say that the jam stall was featured in the Cambridge Independent in November. As always, thank you so much to everyone for your continuing support. We also much appreciate all the donations of preserves, produce, jars and lid covers.

Jill Heale
893596
edheale@btinternet.com

February Garden Club Diary

WE hope you are all keeping safe and well. Due to the current Covid-19 situation, the Garden Club will not be holding meetings in February or March and we cannot yet say when it will be possible to restart meetings. The short, dull days of winter offer a good time to plan improvements in the garden and, with the help of plant and seed catalogues, decide what you would like to grow in the coming gardening season. Winter interest in garden borders can be provided by the contrasting structures and colours of dogwoods, willows, ferns, variegated and evergreen plants and shrubs. The nooks and crannies provided by twigs, berries or spent flowers of pyracantha and mahonia are great hidey holes for bugs and spiders, and provide foraging and shelter for garden birds. From Candlemas day, February 2nd, the increase in the hours of daylight becomes more pronounced as spring approaches. Yellow aconites open on bright days and the white heads of snowdrops nod in the breeze. These harbingers of spring do best in undisturbed ground so they should grow well in sunny spots under deciduous trees or shrubs where it is often too shady and dry for other plants to thrive. Colourful crocuses and early daffodils are beginning to flower too, rewarding our efforts at planting last autumn. These will be followed by more daffodils, hyacinths, tulips and the blooms of spring flowering shrubs, including sweet smelling sarcococca. There is much to look forward to in the coming weeks.

Jim and Helen, Linton Garden Club,
lgcsecretary@yahoo.co.uk, tel. 893577

THE LINTON NEWS Next Publication 1st March 2021
DEADLINES FOR NEWS ITEMS:
Wednesday 10th February

ITEMS FOR ADVERTISING MANAGER
Requests for adverts can be sent to:
Judith Rouse: adverts.linton.news@gmail.com

ITEMS FOR THE EDITOR
Should be sent to Jack Glossop
editor.linton.news@gmail.com

FOR DISTRIBUTION QUERIES CONTACT:
Delivery managers: Jenny and Chris Murison, 660408, or
07905 384741 delivery.linton.news@gmail.com

Call 893619 for an audio version of the Linton News.

Linton bin collection dates
Black bins: Monday 1st and Monday 15th February
Blue bins: Monday 8th and Monday 22nd February
Green Bins: Monday 8th February

Artisssstic project slithers onto duck bridge



VISITORS to the duck bridge on Horn Lane may have spotted a rather colourful display lurking in one of the corners. Dubbed the 'Linton Snake,' the remarkable collection of

painted stones is a feast for the eyes and stretches some ten feet in length. It is clear that a number of talented artists have been involved in the project, but rumours circulate that the installation was started by a pair of creative brothers who so far remain anonymous. We look forward



to seeing the snake grow and encourage others to add to it.

Linton News Team
Photos by Harry Bowyer

ADMIRAL ESTATES

Residential Sales and Lettings

- Local Linton Office
- Cambridge Office
- Specialists: Linton & Local Villages
- 20 Years Experience

Do You Need Help With Your Property?

Call us Now: **01223 891227**

www.admiralestates/linton

ClearTax & ACCOUNTING LTD

Quality, friendly accounting services and taxation advice.

Sole trader and small company specialist.

Free initial consultation

The Granary, Yewes Farm Yard, Hadstock

t: 01223 894036
e: janine@cleartax.co.uk
www.cleartax.co.uk

Singing Lessons

Sarah Rosewell
BA (Hons) Music

Individual singing lessons available for all ages and abilities

Whether towards exams or purely for pleasure

- * CRB Checked
- * Based in Linton

For more information contact:
Sarah on 01223 894861

Email: sarahrosewell@hotmail.com

KJL Roofing

All roofing repairs, lead-work, renewal of pitched or flat roofs

New guttering, repairs/unblocking

Free estimates before any work commenced

25 years + Experience

Tel: 01223 892542
Mob: 07958 618440

BRICK MARKETING

Injecting power into your marketing

brick-marketing.co.uk
hello@brick-marketing.co.uk

LOL'S PIZZA

Hand stretched Neapolitan style pizzas using fresh locally sourced ingredients. Available for private hire and party bookings. Deliveries are available.

Friday and Saturday, Wheatsheaf Way, Linton, CB21 4XB
Monday, The Bell Inn car park in Balsham, CB21 4DZ
07583187560
lolsizzas@gmail.com
Follow @lolspizza on Facebook and Instagram

CapriBlinds

ALL TYPES OF BLINDS SUPPLIED AND FITTED

FREE QUOTATIONS
FREE HOME VISIT

01223-894020

or email colin@capriblinds.co.uk
ALL BLINDS ARE MADE IN ENGLAND - FAST LOCAL SERVICE

Visit capriblinds.co.uk

GLENWOOD BOLTS & SCREWS LTD

www.glenwoodbolts.co.uk

SUPPLIERS OF QUALITY FASTENERS, FIXINGS & SILVERLINE TOOLS

Unit 2 Lintech Court
The Grip Industrial Estate, Linton
Cambridge, CB21 4XN
Tel: 01223 892095 / 893931
Fax: 01223 894122

NRS CARPETS

HOME SELECTION
FREE MEASURING & ESTIMATING

All types of flooring available

Tel: 01223 893634
Mobile: 07885 173113

Getting to know local author Phillipa Warden Hill

AFTER reading about her book *Rupert's Snowman* in the Christmas issue of the Linton News, I was intrigued to know more about the author, so I went to meet Phillipa. Born in Bramhall in Cheshire, Phillipa was always surrounded by art, her father being an artist and art teacher. As children she and her sister were taken to galleries and exhibitions at an early age, and so it was a natural progression for her to go on to Art College. After studying fashion and textiles at Liverpool University Phillipa did her MA at the Royal College of Art and was quickly offered a job as a knitwear designer with Nicole Farhi. Her designs are very much inspired by nature and also by history and antiques. She has designed knitwear for such famous names as Juliet Macdonald and Tommy Hilfinger and has self-published several fashion illustration books. Her current job is as illustrator for Tortoise, a slow news media company. Phillipa has always been obsessed by ghost stories, especially in the dark months of November and December. She often dreamt up plots which she wrote down, after getting up sometimes in the middle of

the night. She decided to take a course in creative writing at ICE and this was how *Rupert's Snowman* came to be her first published work. It was illustrated by Grace Ward, the niece of her oldest friend and published by Purple Butterfly Press, a company which publishes women only books. In addition to her own writing Phillipa finds time to teach 8-11 year olds at a school in Saffron Walden. Her aim is to bring books to life for children and her classes incorporate art, drawing, design, sewing and upcycling. Phillipa is now working on her second book which will be for her daughter Emma, the working title being *A Birthday Surprise*. We look forward to the publication. In the meantime, *Rupert's Snowman* by Phillipa Warden is available from the Linton Flower Boutique, Waterstones and all other good bookshops. You can also follow Phillipa on Instagram at Phillipa@ruperts-snowman and look at her website www.phillipwardenbooks.com, where you will find lots of free downloadable activities for children, a godsend in these uncertain times.



Phillipa toasting *Rupert's Snowman*

Sarah Hurcum

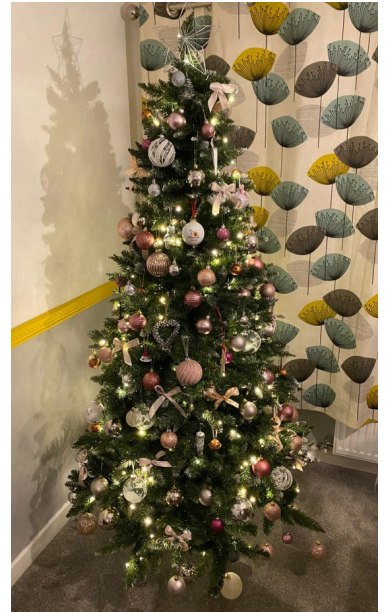
St Mary's virtual events: winners announced!

THANKYOU to all those who entered our virtual Christmas tree festival, children's competition, paper quiz and zoom quiz. Donations from these events have raised £422.25 for church funds. I am pleased to announce the winners:

Lawrence Powell won the paper quiz with an impressive 99 out of 100 correct. The winning Christmas Tree was entered by Megan Till, see photo. The winners of the Children's competition are: Eliza aged two with *Little Donkey*, Eddie aged five with *Away in a Manger* and Heidi aged 10 with *Hark the Herald Angels Sing*. Our zoom quiz saw 13 teams or individuals spend an enjoyable hour together answering questions on iconic landmarks, nursery rhymes, children's literature, Disney, foods from the UK, musicals, children's television and brands from the UK. The winning team was the Foote family.

Answers to our paper quiz are available on our website www.stmaryslinton.org.uk or from events@stmaryslinton.org.uk We look forward to some physical events when we are allowed, but in the meantime look out for future virtual events.

Charlotte Ellis
Chair of St Mary's Events Committee
892257



Megan Till's winning tree

Library select & collect service and a new role for Anna

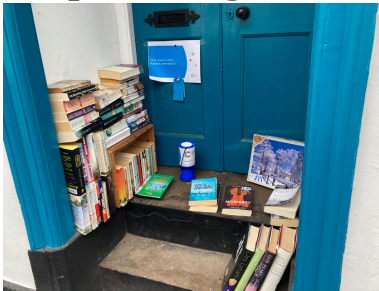
AT the time of writing Cambridgeshire Libraries remain open in accordance with National Lockdown restrictions. You can return books, pick up pre-ordered books, or use a pre-booked computer to access essential services only. During this pandemic thank you for considering the safety of staff and other customers. Please cover your mouth and nose, sanitise hands and keep your visit as brief as possible. Specific titles can be reserved online, or why not try our free Select & Collect service? Let us know the sort of books you enjoy via our website or by calling customer services. We'll check out a selection for you from our shelves and all you have to do is collect. It can be a treat to have someone choose books for you and many of our customers recommend it. We also offer lots of great e-resources to download.

A note from Anna: *I am taking on a new role in Cambridgeshire Libraries, as Library Development Officer for South Cambs. So you'll find me less often in Linton Library - although please still stop me around the village for chats about books and reading. I have loved my three years behind the counter (even the last strange year) and will miss my colleague Lindsay, library volunteers and of course our customers, many of whom have become friends. Libraries are not just rooms full of books, they are also places where people matter and everyone belongs. I hope you always feel that way about your library here in Linton.*

Anna & Lindsay, Community Library Assistants

Linton Library
Lindsay.healy@cambridgeshire.gov.uk
Current Linton Library opening hours:
Tuesday 10am-2pm; Thursday 2-6pm
Customer Services (regular office hours): 0345 0455225
Bus Pass application & renewal: 0345 0451367
Blue Badge application & renewal: 0345 0455204

Front door bookstore proves big draw



ANYONE walking along the High Street over the last year may have seen, or even used, the little book exchange on the deep doorstep of number 95. Jo and Mark started putting books out there in April last year just after the start of lockdown to thin out their own piles and raise money for Cancer Research UK. Mark works for the charity, whose fundraising has been hit hard by the pandemic with the closure of shops and cancellation of fundraising events. Neither of them realised how quickly the little exchange would become an almost self-sufficient resource, as people leave books of their own and pick up something new to read. And so far, they have raised an impressive £529 for the charity. Jo says the only drawback can be getting in and out of the house if the exchange is particularly full.....

Jackie Latham

Air Cadets invest in drone technology

LINTON now have both wing and regional approval to return to face-to-face training when the lockdown is lifted and the National Youth Agency guidelines move to amber. Cadets continue to achieve through our classification syllabus. Upon completion of the Master Cadet award, we issue a BTEC Level 2 in Aviation Studies. This is alongside those cadets completing their BTEC Level 2 in Teamwork and Personal Development. There is still plenty of lockdown success to be had. The squadron Civilian Committee are poised to purchase two brand new, high-tech squadron quad drones. This opens up another stream of air-minded training achievable locally, with a syllabus of ground school and drone piloting techniques. The drones come alongside the additional first-aid training aids purchased in 2020 - the Civilian Committee is committed to enhance all aspects of cadet training ahead of our return, giving cadets access to the latest equipment and resources. With face-to-face training to resume soon, our first priority will be to get current cadets back up to speed and to finish the BTEC and Duke of Edinburgh awards outstanding from 2020. Once this is complete we will be looking to invite new cadets to the squadron.

If you are 12 years old and in year 8, or know someone that would like to join, please contact me on the details below and see www.2523linton.co.uk.

Bradley Wright
Pilot Officer RAFAC
Training Officer
2523 Linton RAF Air Cadets
training.2523@rafac.mod.gov.uk

sqcarsales.co.uk for service & quality

SQ Car Sales
Quality used cars

t: 01223 778 448 m: 07908 128 164

The Linton Laundry

Shirt pressing
Ironing
Laundry
Eco friendly detergents
Wet Cleaning
Door to door service

Call us on 07894 197805
info@lintonlaundry.co.uk
lintonlaundry.co.uk

zigzagpilates

- Qualified Body Control Pilates Teacher.
- Classes and 1-1 sessions
- Specialising in older and less able clients.

Contact Rachel 07905105081
Rachel@zigzagpilates.co.uk
www.zigzagpilates.co.uk

Linton Cabs

Airports / Train Stations / Local Travel

07958657300

lintoncabs@btinternet.com

PLUMBLINE

PLUMBING AND HEATING ENGINEER
PROFESSIONAL DOMESTIC PLUMBING SERVICE

Including Property Maintenance
Painting: Tiling: Plastering: Carpentry

Call John on
01223 893903

Supcik@talktalk.net
Fully Qualified and Insured
Friendly and Reliable Service No Job Too Small

BODY DESIGN PILATES

Su Matthews
REPS LEVEL 4 PILATES TEACHER
& BACK4GOOD PRACTITIONER

07986 692 334

Pilates Classes
Linton & Horseheath

su@bodydesignpilates.co.uk
bodydesignpilates.co.uk

SHINE

WINDOW CLEANING

TEL. 01223 893529
MOB. 07703 518882

FREE QUOTATIONS

FULL PUBLIC LIABILITY INSURANCE

SHINERWINDOWCLEANINGSERVICES@GMAIL.COM

Own a business in Linton, Hildersham, Hadstock or Bartlow? Reach 5,000 local customers each month by advertising with the LINTON NEWS

adverts.linton.news@gmail.com



COUNTRY MATTERS
Text by Oriel O'Loughlin, illustration by Maureen Williams



A quick word on Sperm Whales

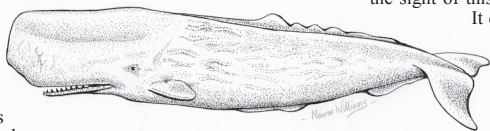
NO, a sperm whale has not yet been spotted in the Granta, though at the moment anything seems possible. Our editor has kindly allowed me to stray from Linton as far as the Norfolk coast, where my brother and I were lucky enough to be introduced to the 48 foot sperm whale stranded on Weybourne beach in December. We were on a bird watching trip, but spent an hour gawping at this extraordinary creature. Our bird guide turned out to be the chairman of the Norfolk Cetacean Society, (namely whales and dolphins), and gave us a tour.

The Latin name is *Physeter Macrocephalus*, a deep sea mammal and the largest of the toothed whales. The average size is 52 feet, and the head makes up one third of its length. Males are solitary outside the breeding season, found in every ocean from the poles to the tropics and living for up to 70 years. They congregate in the tropics only for the mating season. Females and youngsters stay in the tropics, and mothers care for their young for 10 years.

Imagine this huge creature cruising the oceans from the Arctic to the Antarctic, all on its own, chasing a diet of giant squid, and the occasional octopus. It can dive down to 7000 feet, using echolocation, like bats, to find food. It has been filmed moving along the bottom of the ocean floor, upside down, watching for the shadows of squid above. It is the noisiest animal in the world, emitting sounds of 230 decibels, louder than a jet engine taking

off. Before and since *Moby Dick*, whales have been hunted for their oils. Sperm whales can hold up to 1900 litres of spermaceti oil in the space in front of their heads. Like all whale oils, it was used for candles, ointments, pomades and creams, and, latterly, industrial lubricants, varnish, jute and leather preparation. The difference with the sperm whales is that they also produce ambergris, much prized as a fixative for perfumes. Ambergris is a brown wax substance formed by the breaking down of the squid's beak in the whale's intestine. Like so much in nature, it is one extraordinary fact after the other.

On a huge and otherwise cold and desolate shingle beach, the sight of this poor creature was just surreal.



It didn't look decomposed, though it had been dead for around three weeks before being washed up. The reason for it being there – it was likely to have been travelling south but headed down the wrong side of the UK. Finding no squid in the North Sea, it died of starvation. There were scars made by fighting squid, a tiny eye, a huge tailfin, and many other interesting features. So interesting were they that someone from the Natural History Museum had been along to remove a small slab of flesh for examination. Its teeth had been removed to avoid collectors hacking at it. Whales' teeth were carved by sailors for centuries, known as scrimshaw.

The day after our visit the council apparently removed the poor whale – though how it managed that I have no idea.

Tracking down our local puddingstones

OUR area has a good number of so-called Hertfordshire puddingstones. I am not convinced that Hertfordshire has any real justification for claiming the puddingstone, because examples can be found on both sides of the Essex / Hertfordshire county boundary. I recently acquired a copy of *Puddingstone Walks in Essex*, a neat little book that describes walking routes which in total pass more than twenty puddingstones (or groups of puddingstones) in the Essex part of the Hundred Parishes.

A puddingstone is a conglomerate of many small, rounded and colourful pebbles that appear to have been cemented together. Geologists explain that they were formed around 50 million years ago and were deposited in this area by a retreating glacier, possibly only 10,000 years ago at the end of the last Ice Age.

Some puddingstones lay where they were deposited, whilst others have been moved to more convenient locations and sometimes put to good



Ugley Green puddingstone



Standon

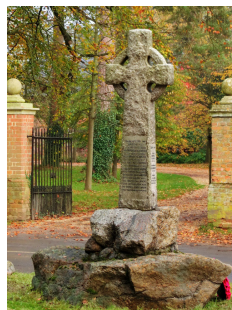
use. Brent Pelham and Arkesden have incorporated them into their war memorials. Others are visible in Arkesden in the stream of Wicken Water beside the bridge. Stones have been used as building material within walls in Much Hadham and Wendens Ambo, in Great Hallingbury's church tower and in St Helen's Chapel at Wicken Bonhunt.

One in Standon is proudly displayed, whilst a large puddingstone in Newport seems to have been unceremoniously abandoned beside the approach road to the station. Others stand in Tilty churchyard, by the pump at Ugley Green, in Saffron Walden Museum's grounds, by the Shell House in Hatfield Forest and beside the Yew Tree pub in Manuden. No doubt there are many more. I would be pleased to hear of any that I have missed. Please email me at hundredparishes@btinternet.com, if possible with a photo. Will we find more in Hertfordshire or Essex?

Ken McDonald, Secretary
www.hundredparishes.org.uk



Wendens Ambo



Brent Pelham

POT POURRI 188

An algebraic fraction

THE letters X,Y,Z represent a different digit with X not being zero. What are the minimum & maximum values of:

$$\frac{XYZ}{X+Y+Z}$$

X is the hundreds digit, Y the tens & Z the unit.

Pot Pourri 187 - The Christmas pudding dilemma
The puddings individually weighed: 70, 90, 110, 120, 150 grams.

Global Warming?

THE interesting article by Oriel O'Loughlin in the January issue of the News on mistletoe reminded me of the changes in distribution of this parasitic plant that have occurred in the past years, and I wondered whether this is a further indication of Global Warming. In 2008 I joined a conducted tour of the University Botanic Gardens. On that visit I enquired of the Director (Professor John Parker) about the many examples seen in the Botanic Gardens, as when we arrived in the Cambridge area in 1976 the plant was rarely seen. Professor Parker replied that when he first arrived at the gardens around 1998 there had only been two specimens within the gardens, but that had increased to over 100 in the ten years he had been in post. He indicated that in the 1990s the northern limit of mistletoe had been Peterborough, but in 2008 the northern limit was Manchester. These days as one visits or drives past the Botanic Gardens one is aware that there is a very large population within the gardens and also around Cambridge. It is observations like this that persuade me that Global Warming is occurring. One hopes that it can be arrested before parts of the planet become too hot for habitation.

Dr Brian Cox

Kelly Harries

Infants zooming

I DON'T really know where to start or what to say. I am sure that many of you are aware of the ever-changing situation around schools being open, then closing to all but the children of key workers. I am hoping by the time you read this, the situation is clearer for us all. However, as usual, the staff team have been amazing. The children at home are offered access to "live" teaching using the powers of Zoom, along with recorded lessons and suggestions for other forms of learning. We start the week with an assembly (I can't begin to tell you how strange it feels talking to yourself) and we have a weekly assembly from St Mary's as well. Our kitchen team continues to provide lunch for children on site and all staff are working to ensure that all children have access to education. It is all looking very different to a normal school day, and different again from the lockdown in March 2020, but we are all making the best of whatever situation we find ourselves in. We will all have days when we find it hard, so be kind to others and yourself. Remember that spring is on its way. Daffodils and lighter mornings are just around the corner; keep a look out for other signs of brighter days on your walks around the village.

Granta School gives thanks

A NEW year and another lockdown, but amongst all the challenges and difficulties there has emerged a community spirit and beacons of light that have shone rays through the dark skies: from the wonderful team at Linton Village College lending us key resources, to an amazing staff team going above and beyond for our students; from generous families donating to our tablet appeal, to supportive special school colleagues holding us up when we have felt fragile. We have been so fortunate to be surrounded by amazing people with positive attitudes, and children who have kept us smiling throughout the most challenging of circumstances. It is truly inspiring what can be achieved through collaboration and kindness. As Rudyard Kipling so eloquently put it, "For the strength of the pack is the wolf. And the strength of the wolf is the pack." Here at Granta we wish everyone good health and joy, as we look forward to coming out the other side of this pandemic a stronger, more united community.

Ruchi Datta
Headteacher
Granta School

Help make lunch

As a result of the excellent campaigning by Marcus Rashford, we are all now aware of 'holiday hunger' and the problems some families face, stretching the budget to cover extra meals during the school holidays. Thankfully, the government have provided funded support during the past few holidays, but following February half-term there is no guarantee of funding to support vulnerable families. A small team of volunteers have been working towards launching a TLG Make Lunch Club in Linton. TLG is a charity supporting clubs across the UK. You can find out more on their website www.tlg.org.uk All volunteers will have been safely recruited in line with our safeguarding policy, and DBS checked. The club will be a fun and friendly event for families, offering games, activities, opportunities for making new friends and a hot, healthy meal – and will be free! If you would like to join our team of Lunch Makers or would like more information, please get in touch. We have raised financial support to get the club launched, but would be very grateful for ongoing support.

Sarah Thorne (MakeLunch Co-ordinator)
caf@stmmaryslinton.org.uk



Cambridgeshire Family
Chiropractic Centre

Bespoke massage and chiropractic care
for aches and pains
Specific techniques for pregnancy and children
15 years' experience
Call 07870568548

www.cambridgefamilychiro.co.uk



Linton's new Estate Agency.
Get in touch for a free
valuation

sam@abodetc.co.uk
01763 259 888

0.75%
Selling
fee!

TIM PHILLIPS & Co. Accountants

Established 1991

Independent, specialist service for:
Small Business • Self Assessment
Personal Taxation

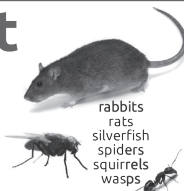
Free initial consultation – no obligation
EASY, FREE PARKING

Copley Hill Business Park, Cambridge Rd., Babraham
Off A1307 between Wandlebury and Babraham

Tel: 01223 830044. www.tpaccounts.co.uk

Pest Right Pest Control

- ants
- bedbugs
- bees
- carpet beetle
- cluster flies
- cockroach
- earwigs
- fleas
- flies
- foxes
- mice
- moles
- moths
- pigeons
- rabbits
- rats
- silverfish
- spiders
- squirrels
- wasps



Based in Linton, call Mark or Carolyn on
01223 897982 or 0845 4682412 or 0777 620 4483 for
a discreet professional insured service

RESIDENTIAL • COMMERCIAL • AGRICULTURAL • INDUSTRIAL

District and County Councillor's report January 2021

HAPPY New Year from your local councillors, Henry and John. With a prolonged episode of lockdown and social restrictions looking to carry on well into 2021, if either of us can be of assistance at all, please do not hesitate to get in touch. Henrybatchelor89@gmail.com & johndbatchelor23@gmail.com

Local Authority Covid Support

At time of writing, we are about to enter the New Year in 'Tier 4', which has its own set of restrictions as laid out by government, which can be seen here - www.gov.uk/guidance/tier-4-stay-at-home. This will of course have some impact on people and local business. There is a small support grant for business that is forced to close due to Covid, available from the District Council - www.scams.gov.uk/businessgrant. There is also financial support for 'wet pubs' from the District Council, this is to support pubs, and other businesses, whose income is more than 50% from drinks alone - www.scams.gov.uk/financial-support-for-south-cambridgeshire-s-pubs-now-available/. Also available from SCDC is a 'Covid Co-ordinator' who can assist with most things Covid related, including advice and directing to these various grants. Her name is Vicky Hoover - Vicky.hoover@scams.gov.uk. There is also support available from the County Council, via their 'Hub' which can be contacted through their website - www.cambridgeshire.gov.uk/residents/coronavirus/covid-19-coordination-hub-your-community-needs-you

Local Directory

South Cambs have set up a local business directory to help promote local business during this time of difficulty, which looks set to continue. Businesses can register themselves on the website and be seen publicly - www.scams.gov.uk/local-business-directory

Local Plan

The joint Local Plan, being drawn up between South Cambs and the City councils, is still moving forward. The latest update is that the findings from the consultation last year have now been collated and published. The councils will take this information on board whilst formulating their preferred options, which will likely be published next autumn. If you'd like to see any of the documents, including the proposed locations of developments, you can see all the information here - www.greatercambridgeplanning.org/emerging-plans-and-guidance/greater-cambridge-local-plan/document-library/

Resurfacing

As previously reported, the County Council are resurfacing some roads in our area, this is due to occur in the first few months of the year. Vaccine Transport Volunteers
The County Council are looking for volunteers to help transport elderly people, who aren't able to drive, to their Covid vaccination appointments. If you can assist please register here - www.cambridgeshire.gov.uk/news/appeal-for-volunteers-to-transport-people-to-vaccination-appointments.

Uttlesford and West Suffolk Local Plans

Some of you may remember that last year Uttlesford District Council (directly to the south of us, North Essex) submitted plans to a government inspector to allocate 5,000 houses near Gt Chesterford as part of their Local Plan. The inspector told them to go away and start again, which they are now doing and are asking for public engagement in this process. Uttlesford still need to allocate these houses somewhere and there is still a risk of them trying to do so on/near to the South Cambridgeshire border, which will directly affect our infrastructure etc. West Suffolk are also going through the same process and need to allocate more housing somewhere in their area, with the likeliest locations being Haverhill and Newmarket. John and Henry will keep you up to date as possible from the local authority angle but do keep your ears to the ground!

A1307 Update There is no update from last month's report, which was - The upgrades, managed by the Greater Cambridge Partnership (GCP), to the A1307 continue with the next steps being installation of average speed cameras between Haverhill and Linton, a new roundabout at the end of Bartlow Road in Linton and remodelling of the Dean Road junction. The signalised pedestrian crossing at Hildersham is attempting to move ahead but is having difficulty securing the land required. The GCP are trying all avenues, including compulsory purchase, which will increase the project time as this isn't a quick process.

Sunnica Solar Farm Consultation Not strictly in our area, or district for that matter, but there are proposals for an enormous solar farm based in East Cambridgeshire, across 4 sites. The company is currently consulting on these proposals and anybody can comment here - sunnica.co.uk/proposals

Councillors Henry and John Batchelor

The Marsh Mail

It's incredible just how much has changed in the space of a month. All of us have had to adjust to being in lockdown once again and the impact that this has had on children's education. At Linton Village College, needing to revert back to remote learning and closing the College to the vast majority of our students came as a shock at the end of term. However, the resilience and adaptability of our staff, students and families has been remarkable. While the press is quick to criticise teachers and teenagers, I have the privilege of working alongside both and observing how hard both have worked to make online learning a success. Overnight, teachers changed curriculum plans and upskilled to move their regular lessons onto Microsoft Teams. Students stepped up, with the support

of their parents and carers, to take greater responsibility for their learning. Our partnership with Cambs Youth Panel continues with many families benefiting from access to technology through this means, in addition to devices issued by the Department for Education. Meanwhile many members of our support staff have been working hard in school to supervise vulnerable children and the children of critical workers. Those learning in school have engaged brilliantly with the remote provision and new routines. Other members of staff and volunteers from the local community have contributed to the set up of a rapid Covid-19 testing centre on site. The College's sports centre has been converted into testing bays and the trained testing team, expertly led by our Sports Cen-

tre Manager, is now working hard to administer lateral flow tests for staff and students based in school. In time, as we welcome back more teachers and students to work and learn in school, more testing will be required. While not as accurate as the lab-processed PCR Covid-19 tests, the lateral flow devices can help us to identify asymptomatic cases amongst the College community. I am incredibly proud of how colleagues and families have responded in the current challenges. The volume of appreciative messages and comments of support have also helped to keep morale high and community relationships strong.

Helena Marsh

PLANNING APPLICATIONS

Submission of details required by condition 4 (Foul Pump) of planning permission S/4418/19/RM

Land South Of Wheatsheaf Barn Horseheath Road Linton Cambridgeshire
Ref. No: S/4418/19/CONDD | Validated: Thu 10 Dec 2020 | Status: Awaiting decision

Submission of details required by condition 3 (management and maintenance of the proposed streets) of planning permission S/4418/19/RM

Land South Of Wheatsheaf Barn Horseheath Road Linton Cambridgeshire
Ref. No: S/4418/19/CONDC | Validated: Thu 10 Dec 2020 | Status: Awaiting decision

Repairs, alterations and demolition of existing conservatory, reduction in length and alterations to the existing garage to create a workshop/store and drive

2 Church Lane Linton Cambridgeshire CB21 4JX
Ref. No: 20/05359/LBC | Validated: Thu 10 Dec 2020 | Status: Awaiting decision

T1 Lime Re-pollard by 3m

7 High Street Linton CB21 4HS
Ref. No: 21/0059/TTCA | Validated: Fri 15 Jan 2021 | Status: Decided

There are two trees in our back garden that I wish to remove as the roots of one (an elder/lilac) are becoming invasive to our greenhouse and driveway. The foliage of the other (a conifer) is starting to impede access to the property and may start to interfere with overhead telephone lines within a year or two.

20 Mill Lane Linton Cambridge Cambridgeshire CB21 4JY
Ref. No: 21/0035/TTCA | Validated: Fri 15 Jan 2021 | Status: Decided

Two storey side extension and replacement of existing garage

18 Emsons Close Linton CB21 4NB
Ref. No: 20/04946/FUL | Validated: Wed 06 Jan 2021 | Status: Awaiting decision

MALLYON & DONALDSON

Linton

Specialising in both Modern and Traditional building methods.

Tel: 01223 891267
Mob: 07941 220868

All contracts finished to a high standard. Reliable service. Local references available.

YOU BEAUTY

CAMBRIDGE

YOUR LOCAL BEAUTY SALON

Check us out at
5 Balsham Road, Linton
Cambridge CB21 4LD
youbeautycambridge.co.uk
01223 668400

The Crown Inn

We are currently closed in line with the Government directive. However, we will be offering a takeaway menu on Friday and Saturday evenings and lunchtime on Sunday. We would welcome your support:

contact us on our website www.crownatinton.co.uk or

www.facebook.com/CrownInnLinton

We hope all our customers stay well and safe during this period and look forward to seeing you all again soon!

LINTON VILLAGE MOTORS

(situated in Great Abington opposite Granta Park)
www.lintonvillagemotors.co.uk

Tel: 01223 830550

- MOT testing
- All makes of vehicles serviced and repaired
- Tyres at competitive prices
- courtesy car provided
- Polite and friendly staff



Mon-Fri: 8.30am-5.30pm Sat: 8.30am-12.30pm



McKenzie & Haywards Garage LTD

MOT by appointment while you wait Servicing, Collection & Delivery Service


Unit 3 & 4, Lintech Court
The Grip Industrial Estate
Linton, Cambs
CB21 4XN

Tel : 01223 894140
Fax : 01223 890035
mhgarage@btconnect.com

PJB Maintenance

No job too small
Ground work, Patios, Floor & Wall Tiling, Fencing, Roof repairs, Demolition
CPSC Licence
Free Estimates

Call **Peter Belsom** on
Mob: 07799 183308
Tel: 01223 668475



MOPS HAIR SALON

HAIR BY JO DENNY
WOMEN | MEN | CHILDREN
CUTTING & COLOURING

41 LINTON HIGH STREET
(BEHIND BOSWELL'S BAKERY)
t: 01223 893 285

The Role of the Parish Council

THE PARISH Council is the branch of government that is closest to the people it serves. Councillors must either live or have their sole business here. No other public body requires this.

Our duties, set out on the Parish Council website, cover matters such as keeping streets clean, and the cemetery, playgrounds and public spaces in a good state of repair. We can make grants from the rates precept to promote local activities, such as music, sport and services to younger residents and the elderly.

The Community Warden scheme, with Age Concern, eases pressure on the NHS and social services by enabling people to live in their own home for as long as possible, and we support the library's Summer Reading Challenge and also the Linton Children's Book Festival.

We apply to the Local Highways section of the County Council for highways improvements such as dropped kerbs, signs at the village entrances, speed controls and measures to improve traffic flow.

We sometimes take on improvement projects, ranging from the community orchard in Symonds Lane, to protecting the village from flooding by restoring the flood plain and clearing ditches. The latest is a new skate ramp for the recreation ground. With the help of Beacon Youth Trust's Lizzie Bottrill, we have talked to potential users and a local builder, have put the work out to public tender, and have received four replies. Three of us will look carefully at each tender, assessing the quality of their designs, safety, value for money and maintenance costs, and present our conclusions to the council. We hope to have something in place by the summer, and it is good to have the funds available to do this.

Much of the time, though, we have to make representations to other authorities – District and County Councils, Police Commissioner, GCP and, through our MP, to government. We are consulted on matters such as planning, licensing, traffic management and road repairs, but do not take decisions. This can be very frustrating when the interests of the village appear to receive scant consideration from these bodies, although of course they in turn are often limited in what they can do by national governments, of whatever party.

We do, though, sometimes get a result. After years of pressure, the County Council is to resurface patched-up roads in Chalklands. The sustained hard work of the planning committee has helped stave off one major development, while helping the District Council to act against the frequent abuses of developers, who would otherwise ignore conditions placed on their work. Examples include building too close to neighbouring houses, ripping up protected trees and hedges, ignoring drainage and flood protection requirements and even endangering the water supply by damaging the aquifer.

Our presentation of residents' concerns about loud music from a village centre pub were recently successful at the District Council's licensing committee, and we hope by the summer to have a solution to the problem of improving bench provision on the High Street, so that residents with limited mobility can get to the shops. We are even on the way of getting some control over obstructive parking (Police Commissioner, District Council).

I hope that this brief account shows that councillors and our families are involved with the village, and try to use the powers we have to promote the interests of all residents.

We currently have four vacancies for councillors to be co-opted. There is no pay or allowances, but we have a good sense of teamwork in the council and a friendly atmosphere. If you'd like to join us, please contact the Clerk at the Parish Council Office.

Cllr John Bald.

Village Hall Local Trades People Required

AS PART of improving the facilities available to the village the Trustees of the Village Hall are looking to upgrade the kitchen so that it can be used for cooking and food preparation once again. This entails a thorough refurbishment, replacing all the old cupboards and fittings with professional grade stainless steel cooking and storage equipment. The walls, ceiling and floor will all need to be brought up to modern standards of hygiene and cleanliness too. We were fortunate that Microsoft offered us some kitchen equipment free of charge which kick started our project very nicely but there is still along way to go.

We have applied to several bodies for grants towards funding the work including the Parish Council and if all goes well we hope to have the new kitchen installed and ready in the first half of this year. Naturally we hope to be able to use as many local trades people as possible for the works including gas, electrical, flooring and decorating specialists, why not let us know if you're interested. We want to offer a first-class facility to all those who need it and our new kitchen is a great start.

Cllr Lee Gardner.

Parish Progress

Following on from last month's Parish Progress we find ourselves back in "Lockdown", the office is currently closed and the office staff are mainly working remotely. Please be reassured, we are still able to access emails and phone messages and will continue to support the village throughout the latest restrictions.

Parishioners may have been aware that we had some issues with severe flooding in the Cemetery during December and after investigation this was found to be connected to a blocked trench leading from the Rivey bridlepath to the ditch on the right hand side. The trench has now been cleared and work to create additional ditches is being chased by County & District Cllr Henry Bachelor. The natural springs in this area, where the chalk and clay lines meet are always going to cause surface water and the only solution is to divert the water away from the path. Our contractor, Ian Blackman has cleared the area of the debris left by the flooding and has cleaned the cremation plaques and I would like to take this opportunity to apologise to everyone affected by this incident. The Cemetery is due to receive some much needed attention in the next few weeks and we look forward to restoring the tranquility. Thank you for all your kind comments on the three village Christmas trees, we are pleased to say that these have now been replanted in the Cemetery and we cross our fingers in the hope that they will thrive.

We are also pleased to report that the two new bins on Camping Close have now been installed. On the subject of refuse, our village custodian had his work cut out on returning from the Christmas break, bins were overflowing in many areas. Please could we politely remind everyone that household rubbish should not be put in the public bins. If you have any issues regarding your refuse collection contact the office or the SCDC refuse team for advice.

Clerk.

Dates for your Diary

The next meeting of the Parish Council in 2021 will be held on Thursday 18th February. If you would like to raise any points with the Parish Council please contact the office by Tuesday 9th February 2021. Meetings are currently being held via remote links on Zoom. An invitation link is posted on Facebook along with all details of the meeting, it can also be requested via email from the office.

Clerk.

Planning Updates December 2020 - January 2021

Horseheath Road s/4418/19/RM, s/3405/17/OL - As building had started, before the conditions had been discharged, this was reported to SCDC Planning Officers. A meeting was arranged for Cllrs Kell, Manassi, Hine, Hill and Enid Bald with the Site Manager and others. Issues with removal of protected hedge, planting schemes, drainage, proximity of building to Harefield Rise, etc. were raised. The developer stated that they had "approval in principle" for the conditions, a situation that does not exist, so building should not have started. Any work that is done is at the developers own risk, so there might be consequences for them. The decisions of SCDC are awaited on discharge of conditions and whether or not development will be stopped. On a more pleasant note, names were requested for the site. The nearest field name was "Michaelotts". Simon de Furneaux, 13C Lord of the Manor of Barham, divided his field to make an estate for his son Michael. The estate got the name of Michaelotts; it consisted of this field (not sure about which exact field, but close), part of Borley Wood, and other land near Wool Street, about eighty acres in all. Turnpike Road – the old name for this end of Horseheath Road (1838 enclosure map), Thackerays – the field across the road (1838 enclosure map).

Another name was needed for a site road. We suggested: Barrows Way - to remember the now destroyed barrows and also because it leads to the allotments. Cursus Crescent - to remember the processional way or ancient roadway.

Spur Way - It is a spur road and also the rent of the land was one knight's fee, a pair of gilt spurs yearly. Ashes Crescent – a nearby field name on the 1786 map and would commemorate the human remains found on site. It might help us get some native planting on site, rather than the alien and invasive species suggested (thank goodness the Vet lives nearby, as this includes Ragwort...)

Bartlow Road - S/1963/15/OL and 2501/19/RM - Just when we thought all was closing down for Christmas, along came another batch of Discharge of Conditions. Perhaps they thought we would not notice, but we did! As most of our objections have been raised previously, we kept the comments down to around seven pages...Some minor ones have been approved, but major conditions cannot be discharged as they are unworkable, conflict with other submissions and amendments or the original consents. Of particular concern is the proposed connection to the already overloaded six inch Victorian sewer which is specifically prohibited.

The EA flood maps have been amended so some amendments related to the Drainage Scheme. The new maps still do not include surface water floods nor river flood zone Two, and so do not show the known extent of flooding at this site. The applications and LPC responses are on the SCDC planning website - put in the site name or application numbers and click on Documents. You will see the depth and range of local, planning, professional and analytic knowledge that LPC put into their responses - all for free. We really try hard to achieve the best for our village.

Meeting updates. Meetings continue with SCDC Planning officers, which are proving informative for both sides. "Save the Cam" - a meeting with Fergal Sharkey of around 500 people on the state of our chalk streams, with the Granta mentioned very often, including by me! www.youtube.com/watch?v=desktop&v=YV3_Ca8CE5Y&feature=youtu.be

Cllr Enid Bald.

**A & R
PLASTERING**
All aspects of plastering undertaken:
Plasterboarding
Rendering
No job too small
30+ years experience
Free estimates
Tel: 01223890228
Mobile: 0774 8627920

**DESIGNER
DRAPES**
Local Curtain & Blind Specialist
01223 890556

Allstar Cleaning Ltd
www.AllstarCleaning.me.uk
Your Local, Professional, Carpet Cleaner Dean
11 years experience
Package to suit every level: Basic, Pet Treatment or Carpet Protector
£15 off for repeat customers
Free stain spotter for all customers
Contact Dean on 01223 654652
or info@allstarcleaning.me.uk to make an appointment.
Allstar Cleaning, 10 Coles Lane, Linton, CB21 4JS
14 Hillway, Linton, CB21 4JE.

**Linton Complementary
Health Centre**
2B Bartlow Road, Linton, CB21 4LY
• Acupuncture
• Shiatsu
• Massage
• Food Intolerance Testing
Telephone: 01223 891145
Email: enquiries@lintonhealth.co.uk

**Ask Edward
Garden & Home**
Routine Garden & Home Maintenance
Gardens cleared, restored & enhanced.
Year round garden programmes available.
'No job too small'
For a free estimate & friendly service, Linton based, call 07768701010 or
Email: edwardsgarden1984@gmail.com

Westlakes
Painting & Decorating
Les Westlake (exterior only)
Mobile: 07929 501101
Tel: 01223 892866
Clive Westlake 07900 492127
Adam Westlake 07917 890752

**PSH
Electrical
Services**
Rewires, New bulbs, Extra lights, Extra sockets, Repair works, Garden lighting, Showers
Registered NIC EIC domestic installer
email pshelectrical27@gmail.com
telephone 07867980738

GARDENER
N.C.H. QUALIFIED
All garden maintenance including:
Weeding - Moving
Hedge cutting - Turfing
Garden clearance
Shed /fence treatment
Hard/soft landscaping
For a friendly professional service please call:
Darryl Tilling
01223 892133
or 07932 021277

**CHRISTOPHER
MARKHAM
HOME & GARDEN SERVICES**
Interior/Exterior Decorating
Fencing, Guttering
Turfing, Garden Clearance
Lawn & Hedge Cutting
Decking & Patio Cleaning
Patios & Driveways
Call on (01223) 892889 or 07973 294946
No job too small...

SHINE
WINDOW
CLEANING
TEL. 01223 893529
MOB. 07703 518882
FREE QUOTATIONS
FULL PUBLIC LIABILITY INSURANCE
SHINWINDOWCLEANINGSERVICES@GMAIL.COM

ABBREVIATED minutes of the Meeting of Linton Parish Council held on Thursday 10th December 2020 Remote Meeting via video/telephone conferencing.
Apologies for Absence. Cllr Paul Poulter, Cllr Amy Smith.
Councillors' Declarations of Interest.
 Cllr Kate Kell. Agenda item 215/20/21 (d) (i) 1 Horseheath Road.

Councillor Vacancies: There are now four vacancies for Co-opted

Chairman's Comment.

The Chairman thanked the Council for their patience especially regarding the extra meetings that have been required in the year.

Open Forum for Public Participation.

Planning.

Bartlow Road.

Cllr Enid Bald gave an update stating that work started on the site has been disputed by the developers. The Planning Committee contest the date, the location and the content of photographs that have been submitted by the developer in their defence and the Planning Committee will submit their summary of events. It was also noted that more work was being carried out on the site as recently as last week. There were concerns raised regarding the removal of a reportedly dangerous tree from the site, which is believed to be a willow on the side of the riverbank and not thought to be a risk. Photographs received of the drain from the pipe looks remarkably like the inflow pipe from the Ashdon aquifer which has kept the river flowing throughout the summer.

A member of the public joined the meeting on this item.

Horseheath Road.

Cllr Enid Bald stated that more discharge of conditions had been received with several objections raised. Also, development has begun, and one house looks to be almost complete with others above the slab level. A site visit with the developer is planned for Friday 11th December 2020.

1 Horseheath Road.

Cllr Enid Bald stated that a tree was damaged in the recent snow-fall. Cllr Kate Kell advised that the developer had been notified and requested to ensure the tree was otherwise secure.

Paynes Meadow.

Cllr Enid Bald confirmed there was no update.

Update on the GCP Workshop attended Tuesday 1st December 2020. Cllr Enid Bald updated the Council on the content of the meeting and expressed that serious concerns were raised regarding development especially regarding water supply and infrastructure.

Consideration of the District and County Councillors Report for December 2020.

County & District Councillor Henry Batchelor added to his written report by stating that there was a new grant available from central government regarding supporting community groups who are trying to tackle loneliness through having to isolate. South Cambridgeshire District Council are also administering Business Grants and all businesses are encouraged to apply. The maximum amount that can be claimed is £3,000.

District Councillor John Batchelor added to the written report that there had been claims that SCDC no longer has a five-year land supply, it has been suggested it was only 4.2 by Fewes Consortium. The District Councillor confirmed that the current land supply is 5.4.

Cllr John Bald thanked the County and District Councillor Henry Batchelor for his intervention regarding the parking issues in the village and asked for his continued support.

Cllr Enid Bald expressed that the recent traffic problems caused by closure or the A1307 had highlighted the need to address the traffic and parking. District Councillor John Batchelor said that there has been a change of Project Manager for the GCP and that he hoped to see more action.

Cllr Enid Bald asked that the LPC be kept informed of any updates on the situation.

Finance.

Parish Precept for financial year 2021-22

Consideration of the S137 funding requests and Independent Grants received.

Cllr John Bald proposed that the S137 Funding was agreed at £20,000.00 and Independent Grants were agreed at £26,600.00 Cllr Brian Cox seconded. 8 in favour with 1 abstention. **Agreed.**

Consideration of the budget for the Working Costs.

The information and the budgets were reviewed, and it was discussed that the 200 cost codes for general running, maintenance and utilities be budgeted to £241,100. Cllr Chris Hine proposed that the Working Costs budget be agreed at £241,100.00. Cllr Simon Hill seconded. All in favour. **Agreed.**

Consideration of the budget for the Active Projects.

The information was reviewed, and it was discussed that a total of £71,819 be allocated to active projects over the next financial year, this also included the contingency budget. Cllr Chris Hine proposed that the Active Projects budget be agreed at £71,819.00. Cllr Brian Cox seconded. All in favour. **Agreed.**

Consideration of the budget for the Long Term Projects.

The information was reviewed, and it was discussed that £179,027.87 be allocated to Long Term projects. Cllr John Bald proposed that the Long-Term Project budget be agreed. Cllr Chris Hine seconded. 7 in favour. 1 Against and 1 Abstention. **Agreed.**

Review of the overall budget in its entirety and confirmation of the percentage increase on the precept year on year.

Following the reviews of each element of the budget independently, the council then reviewed the overall budget in its entirety. Cllr Chris Hine proposed to accept the budget at £178,013.91 and the percentage increase at 0.52% increase on last year. Cllr John Bald seconded. 7 in favour. 1 Against and 1 Abstention. **Agreed.**

Quotations, Membership renewals and Donation requests:

Consideration of two quotations received regarding the installation of a bench. Cllr Kate Kell stated that the LPC had received objections to the siting of the proposed bench and requested that residents who were directly affected by the positioning of the bench are notified when this item is to be brought back for further decision in a future meeting.

Cllr John Bald stated that the position of the bench be discussed again once revised quotes had been received.

Cllr Brian Cox offered to fund the original brown stone cobbles for the area to be repaired.

Cllr John Bald proposed that revised quotes be obtained to include Risk Assessments and a Method Statement and that these be presented at the next Full Council Meeting. Cllr Lee Gardner seconded. **All Agreed.**

Consideration of quotation received from V. Waples for Internal Audit 2020/21.

Cllr Chris Hine proposed that the quote be accepted. Cllr Brian Cox seconded. **All Agreed.**

Consideration of the recommendation from Finance Committee to open a further two savings accounts.

Cllr Chris Hine gave a verbal update that the LPC have funds which need to be distributed into additional savings accounts to ensure improved financial security. It had been discussed at the Finance Committee meeting to open two further accounts, Nationwide and The Cambridge Building Society. Cllr Chris Hine proposed the opening of two additional accounts be accepted. Cllr Kate Kell seconded. All in favour. **Agreed.**

Consideration of request for donation to SERV Suffolk & Cambridgeshire.

Cllr John Bald proposed that a donation of £50.00 be awarded. Cllr Enid Bald seconded. **All Agreed.**

Consideration of request for donation to East Anglia's Children's Hospice.

Cllr Sharon Parker proposed that a donation of £100.00 be awarded. Cllr John Bald seconded. **All Agreed.**

Neighbourhood Plan

Update on Neighbourhood Plan Meeting held on Monday 7th December.

Cllr Kate Kell updated the Council that the committee are trying to arrange a meeting with SCDC to discuss environmental and sustainability issues which need to be approved and funded by SCDC. Cllr Merrie Mannassi commended the Councillors and those from Hildersham for their efforts to get the Neighbourhood plan in place.

High Street.

Consideration of possible sites for cycle stands in the village. Several areas were discussed for consideration and Cllr Enid Bald suggested that the Councillors walk around the village to assess potential sites and present this information at a future meeting.

Consideration of an objection to proposed location of a bench on the High Street.

Cllr John Bald stressed that the village has residents that require seating for disability reasons and that this must be considered. A member of the public said that they felt the Market Square would be an ideal location for the bench and would like to see the area used as community space rather than a car park. They added that a polite notice should be added to the bench by LPC asking for consideration to nearby residents.

The Meadow Recreation Ground.

Cllr John Bald updated the Council that the office had sent out tenders with a closing date of 21st December 2020. Expressions of interest had been received. Correspondence had been received regarding re-surfacing the area of the hard-court and it may be worth considering extending the contract to include the work.

Churchyard.

Cllr Brian Cox updated the LPC that the Church Warden would like to expand the broadband facility to the Church. The only information to add for the Council was for the Church to ensure that the work was completed before the paths were repaired.

Youth.

Cllr John Bald expressed thanks to Lizzie for detailed reports and inclusion of the young people in activities. It was requested that The Beacon Youth Trust be thanked and commended for their continued efforts and the improvement of the facilities and Management in the past couple of years. The transparency of how the funding was being used and the offer to return of unused funds was to be applauded.

Linton News.

Two articles required for Linton News – February Edition. Deadline Monday 11th January.

Cllr John Bald - Role of a Councillor.

Cllr Enid - Planning Updates.

Cllr Lee Gardner – Village Hall - Future Plans

Review of the Meeting schedules for the forthcoming calendar year 2021, for Full Council and all Committee meetings.

Cllr John Bald proposed to accept the Meeting schedules for the forthcoming calendar year. Cllr Sharon Parker seconded.

All Agreed.

Full Minutes are available on the Parish Council website. Clerk.

The Village Hall, Coles Lane, Linton, Cambridge CB21 4JS Tel: 891001
Clerk to the council – Mrs Jenny Seaward
Email: enquiries@linton-pc.gov.uk
Website: www.lintoncambridgeshire-pc.gov.uk
Facebook: www.facebook.com/lintonpc
Office open: Monday, Tuesday, Wednesday and Friday 9am – 12noon. Closed on a Thursday.
 Full Council meetings are held at the Cathodeon Centre, commencing at 7.30pm on the third Thursday of the month, except for August.

A J Pest Control Ltd
 Local Professional Service
 Member of NPTA
 Domestic/Commercial/Agricultural
 Experts in all areas of pest control



Mice, Rats, Wasps, Bees, Hornets, Moles, Moths, Ants, Bed Bugs, Fleas, Flies, Squirrels, Birds, Woodworm.

Tel: 01799 542 505 Mobile: 07855478824
 E-mail: info@ajpestcontrol.com www.ajpestcontrol.co.uk

COOPER BARNES
 AUTOMOTIVE

£50 CASH BACK CAR BODY REPAIR.

Insurance claims, bring your vehicle to a place convenient to you, not to your insurance company.

Call us for details and we will guide you through the simple process.

Service delivery to BS 10125 standard, independently evaluated by a competent third party certification body.

Approved repairers for major insurance and fleet managements.

Cooper Barnes Ltd
 2 The Gnip Ind. Est
 Linton, CB21 4XN
 T: 01223 880603 E: repairs@cooperbarnes.co.uk W: www.cooperbarnes.co.uk

TBC'S APPLY

THE 1:1 DIET
 by Cambridge Weight Plan



- ONE-TO-ONE SUPPORT
- FREE WEEKLY WEIGH-INS
- NO JOINING FEE
- STEPS TO SUIT YOUR LIFESTYLE

Contact your local Consultant:
Kim Davidson 07946 462790
 email kimdavidson.cwp@outlook.com
 facebook CWPwithKim instagram @one2onedietwithKim

LINTON PAVING COMPANY

YOUR LOCAL LANDSCAPING
 BLOCK PAVING & PATIO
 SPECIALIST.
 PROPERTY MAINTENANCE
 Int/Ext Painting, General Repairs
 FRIENDLY SERVICE.
 FREE QUOTATIONS
 Tel: Andre Jacobs

Mob: 07765 594398
 Office: 01440 702498



Neil Claxton
 Painting & Decorating
 Interior/Exterior
 Rooms Emulsioned
 from £120
FREE ESTIMATES
 Tel: 01223 893487
 Mobile: 07724073045
 E-mail: n.claxton925@btinternet.com

ProClean
 'Your Complete Cleaning Solution'

- *Carpet Cleaning *Rugs *Stain Removal
- *Car Valeting *Caravans *Motor Homes
- *Upholstery Cleaning *Stain Protection
- *Floor Cleaning / Scrubbing / Sealing / Polishing
- *Pressure Washing of Patios Paths & Driveways
- *Domestic Cleaning * Top Ups & One Off Cleaning
- *Gutter / Fascia Cleaning

*Contract Office Cleaning (Flexible Options)
TEL: 890433 Mob: 0777 375 8355
 74 Bartlow Rd, Linton, Cambridge, CB21 4LY

De-Salis Wealth Management
 Associate Partner Practice of St. James's Place Wealth Management

SPECIALIST ADVICE ON
 Personal Financial Planning – Pension Planning
 Investment Planning – Protection Planning

Ian Cross DipPFS
 01223 892821
 E-mail: ian.cross@spp.co.uk Website: www.de-saliswealth.co.uk
 De-Salis House, 6 Hillway, Linton, Cambridge, CB21 4JE

The Partner Practice is an Appointed Representative of and represents only St. James's Place Wealth Management plc (which is authorised and regulated by the Financial Conduct Authority) for the purpose of advising solely on the group's wealth management products and services, more details of which are set out on the group's website www.sjp.co.uk/products. The 'St. James's Place Partnership' and the titles 'Partner' and 'Partner Practice' are marketing terms used to describe St. James's Place representatives