

26 years of the  
Linton News  
and  
still going strong

Established 1987

Over 2,350 copies  
distributed  
free in Linton,  
Hildersham,  
Hadstock &  
Bartlow

# THE LINTON NEWS

www.linton.info e-mail lneditor@linton.info

Apr  
2013  
Vol. 27 N° 1  
Publication date  
Monday 1<sup>st</sup> April

E & E PLUMRIDGE  
Design & Print  
41 High Street  
Linton  
01223 891407

## Happy anniversary to the Waggon and Horses

MY wife Laura and I met and lived in America. A few years after getting married, we knocked around the idea of moving back to the UK for a change of pace and to be closer to my family, who lived in Linton. I'd have these chats with my parents on the phone and they'd tell me that the Waggon and Horses was going through landlords like the clappers. They were Waggon regulars; we would drink there when we were visiting.

"Let's run a pub." One of us said while discussing options (the guilty party is expunged from my memory). A place to live and an income! It all kind of went from there...

I had a background in marketing and Laura worked in human resources. We sold our house, I sold my business and we cashed in our retirement plans. It took us a while but we moved from Raleigh, North Carolina back to Linton with our then cat, Curtis (RIP) After a preamble with



The cosy interior of the Waggon and Horses

Picture taken by Ron Pitkin

Greene King (including training and the like) we took the Wheatsheaf in Duxford for a year. It was hard work. It was tiring. It taught us how to run a pub. How to run a retail outlet, really. We wouldn't change the experience for the world. All the while though, my parents kept whingeing about their beloved Waggon.

Seeing the Waggon and Horses droop and knowing that the vacancy was immi-

nent, we took it over, ran both pubs for a bit (not recommended) and finally let the Wheatsheaf go to concentrate on Linton.

We are about to celebrate our two-year Waggon anniversary on 21<sup>st</sup> April. We've had the pub spruced up, trade is great, our customers are fantastic and we are proud.

The Waggon and Horses is a popular pub and will always be busy, provided it is man-

aged properly. It is just a boozier, one of the last of its kind – certainly as far as villages go.

As a community hub it is a gem. It's friendly, clean and we serve great beer. We provide live music, a monthly karaoke, live sport on the telly, an in-house crib league, quiz nights, host darts and petanque teams, and have a weekly Sunday raffle, including a meat raffle on the last Sunday of the month. Look out for some type of outdoors event with a hog roast and live music this July.

With our two-year anniversary on the horizon and no end in sight we thank our patrons for their support and for this opportunity. My parents moved out of the village the week we signed the full lease. Look at what they are missing.

Ben

To keep up with events go to [www.facebook.com/linton-waggon](http://www.facebook.com/linton-waggon) and like the page.

## Guys and Dolls at the village college

SOME lead characters were doubled up in the 50 strong cast for the popular Broadway production of *Guys and Dolls* held at the village college at the end of term. Laura Cassidy, programme leader for drama and director of the show, said; "we have so many talented students we decided the lead parts of Sarah Brown should be performed on different nights by Clea Godsill and Alice Murray, and Miss Adelaide shared by Tamzin Kerslake and Annabelle Green. *Guys and Dolls* is our most ambitious musical yet and this show has contributed to our reputation for high quality arts."

The costumes set the scene for the 1920s era with pink flapper dresses for the dolls, complete with pointed high heeled shoes, long gloves and cigarette holders, while the sharp black and white suits for the gangsters are complemented by trilby hats and jumbo cigars. The crap shooters are a little more relaxed in style with rolled up shirt sleeves, braces and waistcoats. The show also included a Salvation Army general and her staff with full Salvation Army regalia.

Since rehearsals started before Christmas, the lead characters with Tom Quarrell as Nathan Detroit and Hal Woodhouse as Sky Masterson had obviously been practicing their New York accents for their parts set in the underworld of gangsters and gamblers.

The fast moving production, with singing and dancing by



Full company with the two sets of lead characters pictured at rehearsals

Picture taken by Roger Lapwood

students from years 7 to 11, was enthusiastically backed by the college director of music, Chris Charlesworth, and an orchestra of 16 students and teaching staff.

LNT

## The 15<sup>th</sup> Asthma Fair at Chilford Hall

THIS is the event which nearly did not happen, on account of the devastating fire which destroyed Chilford Hall last summer. In order not to disappoint the hundreds of loyal customers who support us every year, we have made every effort to organise an event every bit as good as our 14 previous ones.

The House and Garden Fair in aid of Asthma UK will take place from 10am until 4pm on Tuesday 14<sup>th</sup> May in the stunning, tailor-made, semi-permanent marquee at Chilford Hall. There will be about fifty stalls, of which 14 will be new to the Fair. We have lured some of the most talented craftspeople from around East Anglia and several stallholders from much further afield. As always the Fair will be a brilliant opportunity to stock up on gifts or buy pieces for the home, garden or



The new structure at Chilford Hall

wardrobe which you cannot find on the High Street. You will find everything from household goods to hats and bags to bedspreads.

Please come and support us. This event is in aid of a very worthwhile cause. Every day three people die and two hundred are hospitalised because of their asthma. As a legacy Asthma UK wants no child to die from asthma in the UK - ambitious but possible.

Jo Fairey, 07811 339279

## Fancy a 90mph test of your skill?



WITH the warmer, brighter weather not far away now it is time to think about the new cricket season. Linton has a thriving club with three senior teams playing on Saturday afternoons as well as a midweek team that ended 2012 as league champions.

In preparation for the season which starts in May, the club has a series of indoor net sessions running between 1pm – 4pm on Sunday afternoons in the village college sports centre.

Is there a better way to work up an appetite for a Sunday roast than testing your batting skills against our bowling machine set at 90 mph?

April sees the practice sessions move outdoors to the fantastic four-lane artificial nets, again at LVC. These will run at 6pm on Thursday evenings from 11<sup>th</sup> April all the way through the season.

The club website <http://lintonvillage.play-cricket.com> provides an excellent source of information for current, prospective members and followers alike.

We always welcome new players of all abilities and for more information regarding joining the cricket club, please email [linton.village.cc@gmail.com](mailto:linton.village.cc@gmail.com).

Matthew Chapman LVCC secretary

## Can we help you?

WILL you be holding an event in the near future? A Great British fish & chips supper on 17<sup>th</sup> May for example?

If so, please contact the editor, at the email address on page 3, before the event to publicise it and afterwards we would love to publish your story accompanied by pictures, if we have space.

## 2013 Bartlow walk supports Linton health centre

IN the last Linton News we presented our 2013 Addenbrooke's cause – Prostate Cancer – so it is now time to talk about the causes we support nearer to home.

For the past six years, Linton Health Centre Community Care Fund has received one third of the money raised by the Walk. The focus for expenditure has moved from large items to more portable equipment such as spirometers and pulse oximeters, which can be used to assess patients in their homes. Plans include improvement to the waiting room – hopefully some more toys and play equipment and seating more suitable for those with mobility problems.

And the final cause that the walk supports is the restoration of Bartlow's historic church, now virtually at the end of a ten-year restoration programme. The building is now properly weather-tight and we are turning our attention to the conservation of our three mediaeval wall paintings. Fundraising for this project is not limited to the Walk and, for example, on Friday 21<sup>st</sup> June we will present a Midsummer Concert in the church to which all are welcome. Details will be found on [www.bartlow.org.uk](http://www.bartlow.org.uk) or e-mail [Bartlow@msn.com](mailto:Bartlow@msn.com) to register interest.

Come and join the Bartlow Walk on 5<sup>th</sup> May – it's for a good cause.

Graham Howat, Walk Organiser

## Can you read this?

IF you can read this month's Linton News, then you have the benefit of at least adequate eyesight, so one Linton Group is not able to help you directly. For those who cannot read the Linton News, Granta Grapevine, the monthly audio talking newspaper, is a link to what is going on in the village.

The group provides a free recording with a spoken version of the Linton News and a topical magazine. The April edition is number 278 and recordings have been produced without a break for 23 years since March 1990. We have a team of editors, producers, and readers, with a duplication and distribution manager to keep our listeners provided with the latest Linton News in sound.

If you know anyone in this or the surrounding villages who would like to hear the Linton News and our magazine, get in touch with Roger Lapwood on Cambridge 971797. If you would like to join our team, find out more on our website [grantagrapevine.org.uk](http://grantagrapevine.org.uk) or contact me on 893619.

Mike Crofts

## Put a spring in your step with the fire service

THE Fire Service has devised a simple checklist for residents to run through this Spring:

Smoke alarms – Make sure you have a working smoke alarm on each floor of your home.

Practise your Home Escape Plan if a fire were to occur at night. Ring 999 in the event of a fire – Don't attempt to tackle it yourself.

Instructions – Read safety instructions for DIY tools carefully to avoid accidents.

Never attempt complex DIY electrical wiring yourself.

Get free home fire safety advice by logging on to [www.cambsfire.gov.uk](http://www.cambsfire.gov.uk)

Be hoax aware during school holidays: making a hoax call to the emergency services is a criminal offence and we are asking residents, especially parents, to make young people aware of the consequences of making a hoax 999 call.

Diary dates: Open evening for those thinking about becoming an On-call firefighter at any station in Cambridgeshire. 7-9pm Monday, April 15<sup>th</sup>, at St Ives Fire Station.

Log on to [www.cambsfire.gov.uk](http://www.cambsfire.gov.uk). Like our fan page on Facebook by searching Cambridgeshire Fire and Rescue, and follow us on Twitter @cambsfrs.

To find out if you are eligible for a free home fire safety check, call 0800 917 99 94.

## Too good for jumble...

A WOODEN kitchen trolley in good condition, top measuring 60cm x 51cm and 85cm high with two slatted shelves, a pair of Hilary's blinds – wooden slatted forest green – totalling 5ft sq and two Premier white acrylic bath panels, new and unused, purchased from Charisma Bathrooms, Saffron Walden, front panel 1700mm and end panel 750mm height 525mm are the new items offered this month. Still available are the computer system complete with Windows ME, flat screen etc and a bookcase (wood veneer) 1.2m long and 1.8m high.

The VHS video player with 40+ videos raised £20 for Linton Guides, the nappy bin and bumper sold for £17 to benefit the Infant school and the filing cabinet and 14 chairs made £55 for Friends of Linton Library.

To buy any of the above or to offer an item to profit a charity, please phone Kate France 891602 or email [kfrance@profsoundconsult.com](mailto:kfrance@profsoundconsult.com).

NB: The donor chooses the charity to receive the money.

## Scam email – be warned

I RECENTLY received the following email which appeared to be legitimate as the person concerned (I will call him Harry) could easily have been in this position. I would have helped out but, just in case, I phoned a friend of Harry's to see if they had received one. I was advised it was a scam, I suppose if I had inspected the text I would have realised it is not good English so could not have been him.

The content of the email is as follows:

I really hope you get this fast. I could not inform anyone about my trip, because it was impromptu. I had to be in Manila, Philippines for a program. The program was successful, but my journey has turned sour. I misplaced my wallet and cell phone on my way back to the hotel I lodge in after I went for sightseeing. The wallet contained all the valuables I had.

Now, my passport is in custody of the hotel management pending when I make payment.

I am sorry if I am inconveniencing you, but I have only very few people to run to now. I will be indeed very grateful if I can get a loan of £2,480, from you. This will enable me sort my hotel bills and get my sorry self back home. I will really appreciate whatever you can afford in assisting me with. I promise to refund it in full as soon as I return.

Let me know if you can be of any assistance. Please, let me know soonest. Thanks so much.

Harry

## Someone special comes to afternoon tea



THE children at Linton Granta playgroup thought it would be a great idea to invite the people who are special to them into playgroup for an afternoon tea. We were thrilled that so many parents and carers found the time to come along and join us. Before everyone arrived the children helped to prepare cucumber sandwiches and scones with jam and cream for them to enjoy.



Time to make the sandwiches and get ready for our visitors

Picture supplied by the playgroup

We received some lovely comments from everyone who came. "Lovely Mother's Day tea party. Even Dad was made to feel welcome. We always enjoy the special events and the trouble staff go to make them happy. Thank you."

We are all looking forward to inviting everyone back in the near future for another lovely afternoon.

Karen Thompson, Playgroup Leader,  
Linton Granta Playgroup, 07806 744864  
office@lintongranta-playgroup.org.uk



## Vive la difference at Linton Heights



Samuel proudly shows off his model for the spring homework project

Picture taken by Janet Hann

DURING the first week of March, I had the pleasure of viewing the spring homework projects that were compiled by the pupils at Linton Heights. The pupils were set the task of comparing an aspect of Britain with another country.

The pupils excelled themselves by choosing a wide variety of countries to focus upon and learn about, including France, Italy, Brazil, Spain, America, India, Africa, Australia, New Zealand, China and Japan to name but a few. I came away much better informed about these countries and with a renewed desire to visit some of them.

The wide variety of studies was equally impressive with contrasts between sweets, foods, different sports, buildings, homes, puppets and toys... and even a working volcano.

I was really impressed

with the quality and variety of exhibits. The standard of presentation was very high and featured neatly handwritten works alongside work printed from computer studies and research. The displays were beautifully illustrated with some outstanding models, such as giant ice cream cone, papier maché platefuls of food that were almost realistic enough to eat, a Punch and Judy booth contrasting with a Taiwanese puppet theatre and models of homes and landscapes made from a variety of materials.

It was clear that the pupils had been much inspired by the task and well supported by their parents in their choice of study and mode of presentation.

Well done to everyone for producing such excellent work. It was a joy to see.

Marianne Fuller  
Governor at Linton Heights

## Winter warmers at Conkers children centre



All hands helping with the baking

Picture taken by Debby Jepps

THE Conkers Children centre has been keeping very busy this term with lots of groups running for various ages. We have the Little Conkers group for one-to-two year-olds, Bigger Conkers group for two-to-three year-olds, Bumps to Babies and the Young Parent group. We have been very impressed that even with freezing conditions, treacherous roads and pavements we have had a good turnout and always look forward to seeing the smiling faces of the big and small people who come through our door.

To warm up the children and parents we invited Winter Warmers to come along to our young parents group recently. The parents were given information on healthy eating and even got a chance to make some cheese and chive mini muffins which everyone enjoyed. If you are a young parent under 25 and would like to attend the group that meets on the 2<sup>nd</sup> and 4<sup>th</sup> Friday in the month at Conkers Children centre, then please call Debby in the office on 893594.

We are also taking bookings now for our next parenting course that starts on 24<sup>th</sup> April lasting 10 weeks. If you find your children challenging and would like to enjoy the time you spend with them more, then please make contact and we will do our best to offer you a place.

If you have any questions about what your local Children centre has to offer we would like to hear from you.

Debby Jepps



## Unemployed? This could help you

ARE you unemployed and over the age of 18?

Do you have a mental health problem (this also includes anxiety and depression)?

Do you live in Cambridge City, South or East Cambridgeshire?

If the answer is yes and you feel ready to take steps towards work-related activities, then our service may be for you.

Richmond Fellowship Cambridge Employment Service provides free, confidential and specialist employment support for people recovering from mental health problems to find paid employment, voluntary work, education and relevant training.

We offer a range of services including: information, advice and guidance, career choice and planning, identifying skills and development, practical support with job search, job applications, CVs and interview preparation, and access to free courses for personal and career development Service, 23 Signet Court, Swanns Road, Cambridge, CB5 8LA. Email: cambridge@richmond-fellowship.org.uk

Website www.richmondfellowship.org.uk

**Laura-Jayne's**  
**Freelance Hair and Tanning**  
NVQ Qualified  
*15% off first hair appointment!*  
Prices From:  
• Dry Cut £12  
• Cut & Blowdry £18  
• Occasion Hair £20  
• Spray Tan £18  
• Deals Available  
  
laurajaynenorman@hotmail.com 07804075356

**BED AND BREAKFAST**  
BAKERY COTTAGE  
WEST WRATTING  
CAMBRIDGE  
CB21 5LU  
also  
Cottage and Converted Barn to rent for holidays, weekends and short breaks sleeping 6 and 4 people  
**Tel Carol on 01223 290492 07860 810689**

**CHIMNEY SWEEP**  
**J. L. WIGHT**  
Guild of Master Sweeps.  
Qualified advice Problems solved.  
Certificates issued.  
**www.camsweep.co.uk**  
**01954 253315**  
26, Cow Lane, Rampton

**Local Ironing Service**  
Fast, friendly ironing service tailored to suit your needs.  
Working overtime? Not enough hours in the day? Can't face that stack of ironing?  
Economical hourly rate. Free collection/delivery available.  
Call Carolyn on 01223 891762 07961 919374  
carolynturner63@yahoo.co.uk

**YOLE FARM BUTCHERS**  
\*  
35-37 High Street, Balsham, Cambs.  
**Tel: 01223 893832**  
Family and Catering Butcher  
All produce where ever possible is sourced from our own or local farms

**THREE COUNTIES CONVEYANCING**  
Property Lawyers and Commissioner for Oaths  
Local lawyer  
40 years experience  
NO VAT  
**01223 894300**  
www.threecountiesconveyancing.co.uk

**BED & BREAKFAST**  
Mrs Monica Clarkson  
4 Harefield Rise, Linton  
**Tel: 01223 892988**  
Quiet modern bungalow  
Families welcome  
No Smoking

**For All Alterations to LADIES' or GENTLEMEN'S CLOTHING**  
Ring **HEMLINE**  
Tel: 01223 891034

**NRS CARPETS**  
HOME SELECTION  
FREE MEASURING & ESTIMATING  
All types of flooring available  
Tel: 01223 893634  
Mobile: 07885 173113

**A & R PLASTERING**  
All aspects of plastering undertaken:  
Plasterboarding  
Rendering  
No job too small  
19 years experience  
Free estimates  
Mobile: 0774 8627920

**ClearTax & ACCOUNTING LTD**  
All your tax and accounting needs, personal and business.  
Specialist in tax planning  
Free initial consultation  
Tax returns from £99<sup>vat</sup>  
Ltd Company Package from £699<sup>vat</sup>  
Local, based in Hadstock  
t: 01223 894036  
e: janine@cleartax.co.uk  
www.cleartax.co.uk

**www.AllstarCleaning.me.uk**  
**'Your local, family run, cleaning company'**  
Professional, fully trained and insured carpet & upholstery cleaner office/shop cleaning  
allstarcleaning@gmx.co.uk  
**Office: 01223 654652 mobile: 07525189675**

*the flower boutique*  
Treat yourself, your friends and family to the  **freshest seasonal flowers.**  
Bespoke design service for weddings and funerals.  
41 high street . Linton . 01223 891740  
*www.theflowerboutique.co.uk*

**Singing Lessons**  
**Sarah Rosewell BA (Hons) Music**  
Individual singing lessons available for all ages and abilities  
Whether towards exams or purely for pleasure  
\* CRB Checked  
\* Based in Linton  
For more information contact: Sarah on 01223 894861  
Email: sarahrosewell@hotmail.com

**KJL Roofing**  
All roofing repairs, lead-work, renewal of pitched or flat roofs  
New guttering, repairs/unblocking  
Free estimates before any work commenced  
25 years + Experience  
Tel: 01223 892542  
Mob: 07958 618440

# Readers write...

Post and email addresses and deadline for letters on this page.

All letters for publication must have a full name, address or phone number to enable us to check authenticity. Letters may be edited. Opinions are not necessarily those of the Linton News.

*Anonymous letters will NOT be published but names and addresses may be withheld if requested.*

## Former youth club leaders pass away

Dear Editor  
IN the past 15 months Sid, 96 and Audrey Steel 92 have died. There will be many people in the village and surrounding areas who would remember them both.



Picture of Sid and Audrey supplied by Graham Clarke

Sid was a retired civil servant where he regularly organized social events and Xmas parties for children. He took over the running of Brinkley and Linton Youth Clubs in 1958 and then stayed at Linton until 1977. His wife Audrey joined him and together they worked to broaden the members' horizons, sometimes taking them away on organized trips in the UK and Europe.

He strongly believed that you only get out of life what you put in, and that you should treat everyone with kindness and respect as he put it: "from the dustman to the Queen"

He was like a father-figure to many members of the club and a man who influenced so many young lives in a positive way. No matter what kind of character he dealt with, he reacted with his usual calm demeanour.

In later life Sid was on the executive council of Age Concern and helped on the tea-bar at Arthur Rank for 15 years.

Many of the members had continued to keep in touch with Sid and Audrey and attended the funerals of them both.

I am sure they will never be forgotten by those who knew them.

Graham and Mandy Clarke by email

*Whilst we do not publish obituaries as a general rule I felt that many Linton residents would be interested and saddened by this news. Editor*

**PLEASE note that we welcome reports of events as well as the opportunity to publicise them beforehand.**

**We also need a reporter, someone who is regularly in the village and can attend a meeting or event. Please contact the editor at the email address on this page.**

**A TOUCH OF NAILS**  
GELISH MANICURES & PEDICURES  
PERFORMS LIKE A GEL APPLIES  
LIKE A POLISH  
Call Michelle on  
**07866 017 801**  
supcik@talktalk.net  
HORSEHEATH

**IMPROVE YOUR SPANISH AT HOME**  
\*experienced teacher\*  
\*lessons in your own home\*  
\*free initial assessment/consultation\*  
If you are interested in improving your Spanish contact:  
**Susan Hodges (01223) 891521**  
or sjhmac2@yahoo.co.uk

## Linton WI snaps out of it



JANET and Christopher South were our speakers in March, giving a slide show but instead of actual slides they shared their travel memories. The screen would be our imaginations. Janet passed round a list of intriguingly-titled slides and asked us to pick a few at random, on which she and Christopher alternately spoke.

*Shoes, shoes, shoes.* Staying in a traditional Japanese hotel, to their surprise, they had to change into brown shoes when entering the hotel, red shoes for the bedroom and green shoes for the lavatory. Invariably, they ended up in the wrong coloured shoes.

*Cora cock and Koran cacophony.* In Mali, sitting in a cafe, they heard the strains of the cora (a traditional stringed musical instrument); poultry was clucking round their table and the call of the muezzin could be heard from a distant minaret, these combined sounds made for an unforgettable experience.

*Dangerous dining in old Istanbul.* In a cafe, situated on a street with open sewers each side, they ordered fresh mussels and were taken aback when the waiter went outside the door rather than to the kitchen, with all that implied. Fortunately they did not become ill.

*How the rich see the poor.* In a run-down oil town in Texas there was an enormous skyscraper with an observation platform. The lift stopped at every floor and many rich professions could be seen. Outside, many people waited, occasionally going into a building. They later found out these were poor people selling blood.

*Watch out! Lions about.* On safari they saw two huge adult lions prowling menacingly towards another lion on a small hummock. Would there be a scrap? The bus driver said the lions were litter brothers and, sure enough, they played together like kittens.

At our next meeting, which will be our annual meeting, on 2<sup>nd</sup> April, Gerald Dodd will be asking: *What's that smell in the kitchen?* Everyone is welcome.

Sally Proberts

## More choice in social care

**SOCIAL care is provided to people who have been assessed as having substantial or critical support needs with personal care, getting meals, managing medication and staying safe.**

**If you need social care the County Council will arrange your care for you but they now have a duty to offer and provide Direct Payments. Direct Payments are an alternative way of getting the care and support you need. They are cash payments made directly into a Direct Payment bank account so that you can use the money to make your own social care arrangements.**

**With a Direct Payment you have more choice, control and independence about how your care is organised. If you would like to find out more about Direct Payments visit the Your Life, Your Choice website at: [www.yourlifeyourchoice.org.uk](http://www.yourlifeyourchoice.org.uk), pick up a leaflet from your library, phone adult social care enquiries on 0345 045 5202, or contact the Cambridgeshire Direct Payment Support Service on 0845 6000 684.**

**LITTLE HANDS NURSERY SCHOOL**  
Linton & Bartlow  
Offers preschool care and education for children - 2 years to school age  
High staff to child ratio      Excellent Ofsted report  
Sessions can be booked flexibly throughout our nursery day 9am-4pm in term time  
For children old enough for funding (term after their 3<sup>rd</sup> birthday) 15 hours of sessions can be taken each week with no charge  
Optional holiday clubs are available for children aged 2-8 years  
Early starts and late finishes are available  
For further information please contact  
Mandy Norris - Nursery Manager : 01223 897945 e-mail lh-bartlow@btconnect.com  
Little Hands is also at Bourn, Melbourn and Newton, visit the website at [www.littlehands.co.uk](http://www.littlehands.co.uk)

**NEW YEAR TRIPLE FITNESS NEW YOU**  
THIS JANUARY  
**2 MONTHS FREE MEMBERSHIP**  
THAT'S JUST £20.99 PER MONTH!  
**NEW CORPORATE MEMBERSHIP**  
{CONTACT US 01223 89 11 64}  
THE GOLF UNION CAMBS TRIPLE FITNESS  
01223 89 11 64  
joe@triplefitness.co.uk      www.triplefitness.co.uk

**BARN OWL PROJECTS**  
**B & B or Self Catering**  
2 Barns now available - Both sleep 4 in family room  
Character properties private & self contained annexe with vaulted ceilings and exposed beams  
Double Vintage Cast Iron or King Size bed choice  
Additional beds and travel cot available on request  
Freeview TV and free WiFi  
Luxury Shower Rooms and Kitchens  
Off road car parking  
Located in Market Lane just off Linton High Street easy walking distance of all village amenities  
Mobile: 07584 430051 E Mail: [Michelle@barnowlprojects.co.uk](mailto:Michelle@barnowlprojects.co.uk)  
Trip Advisor Highly Recommended  
[www.barnowlprojects.co.uk](http://www.barnowlprojects.co.uk) incl full photo gallery & floor plans

**THE LINTON NEWS** Next Publication 6<sup>th</sup> May 2013  
**DEADLINES for ADVERTS Monday 13<sup>th</sup> April**  
**NEWS ITEMS Wednesday 15<sup>th</sup> April**  
**ITEMS FOR ADVERTISING MANAGER**  
**Limited space on waiting list for Linton businesses**  
Changes to ads can be sent to: Judith Rouse  
email: [adds@linton.info](mailto:adds@linton.info)  
**ITEMS FOR THE EDITOR**  
**Can be put in the Linton News Box in the Post Office**  
Editor: Wendy Foster email: [lneditor@linton.info](mailto:lneditor@linton.info)  
phone 891626  
**For distribution queries contact: Kate France 891602**

## LINTON DIARY

**For entry in this list, ensure that your event is written into the diary in the Post Office, failure to do so could mean non-entry to the diary here.**

*Please refrain from putting commercial/business dates into the Linton diary, these will not appear in the Linton News.*

*Only dates for clubs and groups will go in.*

You may also send an email with your event details to [diary@linton.info](mailto:diary@linton.info), or use the form on [www.linton.info](http://www.linton.info).

**Call 971797 for an audio version of the Linton News**

Details of items in bold type may be found elsewhere in this edition.

**WEEKLY**

Cricket practice sessions, Sunday, 1pm & Thursdays 6pm	LVC
Conkers childrens' centre, 9am-12noon, Mon-Thurs call 07768 008919	CC
Whist drive, 7.30pm Mondays	VH
Chestnut baby/toddler group, 9.30-11.30am Mondays term time	CC
Linton Granta football bingo, 7pm Mondays	Pavilion
Linton theatre workshop, Mondays (call Joe 01440 703701)	
WEA, Tuesdays, 10am, term-time	VH
Scrabble club, 10am-12noon alternate Tuesdays	CP
Linton Granta toddlers, 9.30-11.30am Tuesdays	LVC
Granta bridge club, 2pm Tuesdays	VH
Table tennis club, 7.30pm Tuesdays	URC
Linton chess club, 7.30pm Tuesdays (893509)	CC
Granta duplicate bridge club, 2-4pm Tuesdays	VH
IT club, 7pm Tuesdays	CC
Tots in tow, 10-11.30am Wednesdays, term time only	VH
Linton radio race car club, 6-10pm Wednesdays	VH
Carpet bowls, 7.30pm Thursdays	VH
Parents, carers and tots Mocha house, 9.15-10am Fridays	CP
St Mary's church choir, 7-8.30pm Fridays	St Mary's
Bridge club, 7pm Fridays	CC

*For sports centre courses please call LVC sports centre on 890248*

**APRIL**

<b>2 WI, 7.30pm</b>	<b>VH</b>
3 Reading group, 8pm	D&D
4 Luncheon club, 12noon	Old Red Lion, Horseheath
6 Farmers' and arts & craft market, 9am	LVC
8 Exotic animal experience, 10.30am	Library
8 Camera club, 7.15pm	CC
9 VIP group, 2pm	Chalklands
<b>9 Gardening club, 7.30pm</b>	<b>VH</b>
11 Parish council meeting, 8pm to be checked	CC
<b>13 Music Society concert, 7.30pm</b>	<b>St Mary's church</b>
<b>14 AsthmaUK Fair, 10am</b>	<b>Chilford Hall</b>
16 Storytime, 2pm	Library
<b>16 History society, 7.30pm</b>	<b>VH</b>
17 CAMTAD hearing help, 9.30am-12noon	HC
<b>17 Infants' school summer fair, 5pm</b>	<b>Infants' school</b>
19 Quiz & Chips, 7.30pm	LH
23 Annual Parish meeting, 7.30pm	VH
30 Storytime, 2pm	Library

**MAY**

1 Reading group, 8pm	D&D
2 Luncheon club, 12noon	Old Red Lion, Horseheath
2 Parish council meeting, 8pm	CC
4 Farmers' market and arts & craft market, 9am	LVC
<b>5 Bartlow three counties walk, 10am</b>	<b>Bartlow</b>
6 Camera club, 7.15pm	CC
7 WI, 7.30pm	VH
9 ACE lunch, time and venue to be announced.	

**For Cathodeon Centre bookings contact Sue Mudge, 07765 369266**  
KEY: CC Cathodeon centre, CP church pavilion, D&D Dog and Duck, HC health centre, LH Linton Heights school, LVC Linton village college, RG recreation ground, URC United Reform church, VH village hall  
**Library times:** Mon closed; Tues 10am-5pm; Wed 4pm-7pm; Thurs 2pm-5pm; Fri 10am-5pm; Sat 10am-1pm.  
**Linton refuse collection:** 8<sup>th</sup>, 22<sup>nd</sup> April & 7<sup>th</sup> May  
**Linton recycling collection:** Tues 2<sup>nd</sup>, 15<sup>th</sup>, 29<sup>th</sup> April

**Benten & Co.**  
Chartered Certified Accountants  
*We are a friendly, well established firm, large enough to deal with most accountancy and taxation matters.*  
*Please telephone for an initial consultation (without obligation)*  
Abbey House, 51 High Street, Saffron Walden  
Telephone 01799 523053  
[www.benten.co.uk](http://www.benten.co.uk)

**ProClean**  
*'Your Complete Cleaning Solution'*  
\*Carpet Cleaning \*Rugs \*Stain Removal  
\*Car Valeting \*Caravans \*Motor Homes  
\*Upholstery Cleaning \*Stain Protection  
\*Floor Cleaning / Scrubbing / Sealing / Polishing  
\*Pressure Washing of Patios Paths & Driveways  
\*Domestic Cleaning \* Top Ups & One Off Cleaning  
\*Gutter / Fascia Cleaning  
**\*Contract Office Cleaning (Flexible Options)**  
**TEL: 890433 Mob: 0777 375 8355**  
74 Bartlow Rd, Linton, Cambridge, CB21 4LY

**G&W electrical contractors Ltd**  
Domestic & Commercial Inspection & Testing  
All aspects of electrical work covered  
[gandwelectricaltd@gmail.com](mailto:gandwelectricaltd@gmail.com)  
07795 595856  
07775 853866  
01440 420603

**LINTON PAVING COMPANY**  
YOUR LOCAL LANDSCAPING BLOCK PAVING & PATIO SPECIALIST.  
**PROPERTY MAINTENANCE**  
Int/Ext Painting, General Repairs  
**FRIENDLY SERVICE. FREE QUOTATIONS**  
Tel: Andre Jacobs  
**01223 890060**  
**07765 594398**

**KELVIN SCHOOL OF MOTORING**  
**DOE ADI and MIAM Pass Plus**  
Instructing for 35 years!  
For bookings **01223 892263**  
**16 Back Road LINTON**  
[www.kelvinschoolofmotoring.co.uk](http://www.kelvinschoolofmotoring.co.uk)

**PJB Maintenance**  
No job too small  
Ground work, Patios, Floor & Wall Tiling, Fencing, Roof repairs, Demolition  
CPSC Licence  
Free Estimates  
Call **Peter Belsom** on  
Mob: 07799 183308  
Tel: 01223 891273

**easy-drive school of motoring**  
**Tony Holmes**  
**Grade 6 Instructor**  
**1 hour lesson £22**  
**2 hour lesson £40**  
**01223-893346**  
[easy-drive-som.com](http://easy-drive-som.com)

# Your chance to tell police what you need ...

THE latest Linton/Fulbourn area police meeting was held at Linton Heights school on Tuesday 19<sup>th</sup> March.

The purpose of these meetings, held quarterly, is to keep the public informed about local policing, give them a say in what they want and provide answers about how we have performed.

Information from this survey will be given at the next meeting and will be added to the debate on what police will be doing in your community.

This is your chance to give your views about policing in your area. If you have time, please fill in the form below and hand it in to the police station or post it to PS 7 Sandra Davidson, Safer Neighbourhood Team, Sawston police station or go to [www.surveymonkey.com/s/YGNB6DQ](http://www.surveymonkey.com/s/YGNB6DQ) and complete the survey online. We value what you say. The Linton News hopes to bring you a report of the meeting next month.

1. Which village do you live in or represent..... Horseheath, Bartlow, Hildersham or Linton

-----

2. What age are you? (We would like to know how representative an audience our survey reaches) 16-18; 18-25; 25-40; 40-60; 60+; rather not say.

-----

3. Regarding crime and disorder, which single issue would you like police in your area to deal with, which is specific to your community? (Please include specific information; location, timings and nature of the problem).

-----

-----

-----

4. Please use this section to provide any feedback you might have about this survey. \*Do not use this to report previously unreported crime or incidents in progress, Please call 101.

-----

-----

-----

## In your own time ...

### A narrowboat nirvana

**RATTY** says in *The Wind in the Willows* "There is nothing, absolutely nothing half so much worth doing as simply messing about in boats". Andrew Aitchison would agree.

Andrew worked for years as a civil engineer in the Middle East and in 1999, was asked to work on a construction project back home in the Midlands. He didn't want to stay in B & Bs and was thinking of buying a caravan when he saw some canal boats and was hooked.

Neither he nor his wife Veda had ever been on a narrow boat, apart from an evening booze cruise in Dudley 20 years previously so it was a steep learning

curve for both when they bought Fairwinds, a 50ft boat which sleeps four.

Fairwinds was built in 1985 by Charlie Fox, a boat builder based in March. The facilities on board are basic but practical and comfortable, with a wood-burning stove and diesel heater. The licence fee paid to the Canal and River Trust entitles you to put the boat in the water and moor up anywhere on the towpath side.

In November, Andrew gets the boat ready for winter, drains out any water and makes sure that anti-freeze is in place. He starts it up again in spring and says that you see a completely different aspect of



A happy man: Andrew messing about on the river

Picture supplied by Andrew Aitchison

life from a boat and you can enjoy the countryside in all its glory.

When all the birdwatchers and visitors have gone home, the river becomes wonderfully tranquil and you can wake up in some

mesmeric locations.

Andrew and Veda have travelled along many waterways but still have many more to explore. You get the feeling that they will never tire of it.

Sarah Hurcum

### It's a good life growing your own five-a-day

THOUGHTS of bountiful fruit and vegetable plots encouraged gardeners to brave the icy temperatures this month to join Chris Day from Buckingham Nursery when he presented his talk Grow Your five-a-day: The Good Life Garden to the gardening club.

He reminded us of the joy of fresh flavoursome food from growing your own, as well as the fun when recalling the humour of the TV programme *The Good Life*.

Chris went on to provide a feast of advice on how to improve our yields and avoid dreaded pests and diseases in our precious crops. A

surprise was how many fruits and vegetables are comfortably grown in containers, although it is doubtful how many of us will be trying the onion hanging balls with which the nursery gained gold at Chelsea, as they seemed a little high maintenance.

Next month, Helen Riches joins us to provide encouragement and guidance about giving our gardens a thorough MOT. We look forward to welcoming members and visitors at 7.30pm on Tuesday 9<sup>th</sup> April in the village hall. A quick reminder to inspire the village's photographers that the categories for this year's show are: Photographs of Linton, Garden ornament(s), sunset, pattern(s). A maximum of three unmounted photographs are permitted per category, each not greater than 40 square inches.

Kirsten Newble, 892425 [lgcsecretary@yahoo.co.uk](mailto:lgcsecretary@yahoo.co.uk)

### Springfield House B&B

14/16 Horn Lane, Linton  
River views from bedrooms & guest lounge  
Tel: 01223 891383

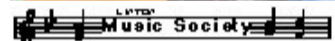
[www.springfieldhouseinton.com](http://www.springfieldhouseinton.com)

### Music at the double ...



The twins enjoying what they do best

Picture supplied by the Katona Twins



THE classical world's best known guitar duo gives recitals in major concert venues throughout the world and have been winners of over ten international prizes at major competitions.

Their programme for the Linton Music Society encompasses arrangements of Bach's French Suite No 5, Bizet's Carmen Suite, and the Spanish music of de Falla, Rodriguez and Albeniz.

The concert takes place at 7.30pm on Saturday 13<sup>th</sup> April at Linton Parish Church.

Tickets are available at the door or in advance, by telephone or in person from Sweet Talk News, 77 High Street, Linton. Telephone 893480.

For more information please contact the secretary at [linda-bird@waitrose.com](mailto:linda-bird@waitrose.com)

Linda Bird

### You can quit with our help

CAMQUIT is our local stop smoking support service who are a team of professional advisors who understand that quitting smoking is different for everyone.

They can arrange nicotine replacement therapies at prescription only cost and for those who don't pay prescriptions, these are free. Camquit is open extended hours, including weekends and have

clinics available right across the county.

If you have friends or family who smoke, please show this article to them. They can call our dedicated helpline on 0800 0184304 or self refer to our service via [www.camquit.nhs.uk/CAMQUIT/Support/Referral-form.htm](http://www.camquit.nhs.uk/CAMQUIT/Support/Referral-form.htm).

For more information about our service please visit [www.camquit.nhs.uk](http://www.camquit.nhs.uk)

**STEVE WEBB**  
Painter  
&  
Decorator  
Over 30 years experience  
CITY & GUILDS CERTIFICATES  
Montford Barn  
Horseheath  
Tel: 01223 893864  
Mobile: 07772991373

**LINTON VILLAGE MOTORS**  
(situated in Great Abington opposite Granta Park)  
[www.lintonvillagemotors.co.uk](http://www.lintonvillagemotors.co.uk)  
Tel: 01223 830550  
• MOT testing  
• All makes of vehicles serviced and repaired  
• Tyres at competitive prices  
• courtesy car provided  
• Polite and friendly staff  
Mon-Fri: 8.30am-5.30pm Sat: 8.30am-12.30pm

**Springfield House B&B**  
14/16 Horn Lane, Linton  
River views from bedrooms & guest lounge  
Tel: 01223 891383  
[www.springfieldhouseinton.com](http://www.springfieldhouseinton.com)

**Linton Complementary Health Centre**  
2b Bartlow Road, Linton

- Acupuncture, Peter White; MSc, MBACc
- Massage, Peter White; MSc, Dip. Massage
- Shiatsu, Cindy Faulkner; BA, MRSS
- Chiropody, Sharon Bennett; M.Inst.Ch.P
- Counselling, Debbie Soar; NNEB, Dip.Couns

Telephone: 01223 891145  
Web Site: [www.lintonhealth.co.uk](http://www.lintonhealth.co.uk)

**Small Gifts**

Watch batteries and straps fitted while you wait.  
Jewellery repairs including sizing and polishing.

All repair work carried out on the premises by a professional with 40 years experience.

We stock a selection of:  
Silver Jewellery • Photo Frames • Collectables • Toiletries • Greeting Cards • Gift Wrap

61 HIGH STREET, LINTON, CAMBRIDGE, CB21 4HS  
TEL: 01223 894225

**BROOKLANDS CAR COMPANY**  
CAMBRIDGE

**DRIVE SOMETHING SPECIAL**

PLEASE CONTACT US TODAY FOR A ONE-TO-ONE FRIENDLY AND PROFESSIONAL SERVICE:

Now in association with [newmarque.co.uk](http://newmarque.co.uk)

LONGSTANTON, CAMBRIDGE CB24 3DW  
Tel: 01223 893989 | [www.brooklandscarcompany.co.uk](http://www.brooklandscarcompany.co.uk)

**N. CLAXTON**  
Painting & Decorating and Property Maintenance  
**FREE ESTIMATES**  
Tel: 01223 893487  
Mobile: 07724073045  
e-mail: [n.claxton925@btinternet.com](mailto:n.claxton925@btinternet.com)

**The Crown Inn, Linton**  
freehouse, restaurant & accommodation

"HAPPY HOUR" 5.30- 6.30pm Monday-Friday  
Spring is here with the all new menu at the crown along with the mid week specials as always.  
Monday night fish & chips from £5.95,  
Tuesdays is Hereford rare breed rump steak & chips from £7.90  
For reservations call 891759

We have a great selection of fine wines and real ales you can enjoy in a relaxed atmosphere.  
Our Highly Qualified chefs will do all they can to cater for dietary needs.  
[www.crownatlinton.co.uk](http://www.crownatlinton.co.uk)  
11, High Street, Linton, Cambs Tel 01223 891759

**Rural Magpie**  
A store of rescued treasures and hand-painted furniture pieces...

[www.ruralmagpie.co.uk](http://www.ruralmagpie.co.uk)  
Contact Karen on 01223 894292 or [karen@ruralmagpie.co.uk](mailto:karen@ruralmagpie.co.uk)

**L.B. CABS LINTON**

For all your long and short taxi trips  
Airports  
Based in Linton

PHONE LINTON  
01223 892986

**Westlakes**  
Painting & decorating exterior and interior

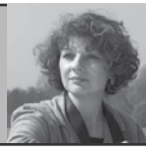
Les Westlake  
Mobile: 07929 501101  
Tel: 01223 892866

Clive Westlake  
Mobile: 07900492127



# Linton Country Diary by Darryl Nantais

Illustrated by Maureen Williams



## The illustrator and the siskin

I HAVE the luxury of listening to Brahms' third Symphony whilst writing our diary.

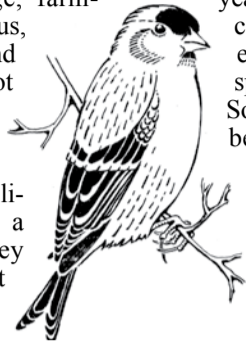
In days of old, our long suffering craftsmen would keep for company a quartet. The tool-maker or cobbler would listen - not to the radio but to melodious songs of caged birds, greenfinch, chaffinch, linnets and siskin, being the favourite four.

Our inimitable and talented illustrator Maureen has been visited by the latter this winter. 'T'was such a delightful honour until realising it was to the exclusion of almost all her regular garden visitors.

So who are the siskins and what are they doing in Linton? Well, unveiling at least one oddity surrounding their mysterious migration, for with no

particular pattern or regularity they up-sticks, heading south.

I suspect extreme sensitivity to climatic change, farming practice and thus, available seeds. And seeds they love, not too fatty and, like all shoppers these days, they require skilful acrobatic abilities to nuzzle out a decent lunch. They do enjoy thistle, yet ever increasing fields of rapeseed may be a contributing factor in their recent revival. Experts warn such a diet is not ideal for this species and by the way, a couple of hyper-sneezing-bee-keeping friends tell me it makes the honey very stiff!



However, these birds, say a third smaller than a blackcap begin to pair off at this time of year with very active and competitive displays, easily causing other species to stay clear. So, although I've often been quite unsure as to having spotted a young greenfinch or a common siskin, in my opinion no wildlife here could be regarded as common.

Statistics point to our busy friend increasingly frequenting our gardens, yet Europe-wide their numbers are down. Still, whilst many a good tree planting soul joins the quest to repair the enormous damage to our once forested island,

we may at least note the little siskin's dark cap contrasting against its pretty yellow face of this ornithological jewel and tell our children of its beauty. Its song can be ascending or descending with its echo-mimetic word being tillew or simply a harsh chirp.

By contrast it was great to see Dave's photograph on Facebook of the Pterodactyl, sadly or otherwise a heron with a roof top view, busy scouting for unprotected ponds. What an elegant sight.

And furthermore, may I reiterate my response to a few enquiries that the blood curdling sounds from the cemetery in the dead of night are in fact made by an innocent muntjac.

Until next month-listen out for the symphony of spring.



SUMMER is not far away, so put those hanky boxes down, pick up the phone and call for more information on some of the exciting classes that we plan to run, commencing 22<sup>nd</sup> April.

A selection of classes on offer are Understanding Computers for over 60s, Cook4Life, Guitar, Feltmaking, Tai Chi, Pies, Puddings and Picnics, and Sustainable Eating: How to eat great food that won't cost the earth.

There are five and 10 week courses as well as Saturday Workshops. The next workshops are due 16<sup>th</sup> March and 18<sup>th</sup> May.

We will shortly be preparing our brochure for September and are looking for ideas for new courses to run. All suggestions welcome. We are also looking for new tutors and speakers so if you would like to offer your services, please contact us.

*For more information on any of the above or a copy of our programme, please contact Sue or Wendy on 712424 or via email at [community@sawstonvc.org](mailto:community@sawstonvc.org). Alternatively please check our website [www.sawstonadulted.org](http://www.sawstonadulted.org) for more information.*



## May the Summer Fair fun begin

LINTON Infants PTFA will be holding their biggest annual fundraiser, the Summer Fair, between 5-7pm on Friday 17<sup>th</sup> May.

Join us for a fabulous fun filled evening for all the family. With lots to do from bouncy castles, train rides and go-karts to face painting, tombola, live music and a fantastic raffle with £100 top prize. There is sure to be something for everyone. We will take care of tea too, with a BBQ, picnic tea boxes and, of course, lots of cakes.

Jamie Webster  
[jamiwebster@man.com](mailto:jamiwebster@man.com)  
Linton Infants PTFA committee

## Triumph in the bell tower

SOME people think church bells a nuisance and some love to hear them as they ring out over the village. But why is this ancient English tradition so fascinating?

The Linton Band includes all ages and abilities from beginner to highly experienced. Ideally you need this mixture as change ringing is quite complex.

Some very experienced ringers have recently joined the band, so next time listen to the bells are they being rung evenly, or with hiccups? Being a team sport, the result is not always perfect but we progress. Our latest triumph? We rang *Cambridge Surprise Minor* faultlessly for Sunday service - no mean feat for Linton.

Don't expect to recognise the tunes. Bell ringing is more like a game of chess played at speed, each bell continually swapping so the order never repeats. Beginners start by learning to handle the bell (which is very heavy and swings full circle) and then progress to ringing simple rounds. The real fascination begins as they learn to mingle with the other bells; simple patterns at first but immensely complicated in hotspots like Cambridge.

For anyone who enjoys exercise, social life and something completely new which might become a lifelong interest, why not pay us a visit. Children and teens learn more quickly but you can start at any age provided you can climb the ancient tower steps. Just turn up one Wednesday at 7.30pm for a look, or email me. Jackie Latham, [jackielatham@hotmail.com](mailto:jackielatham@hotmail.com)

### McKenzie & Haywards Garage

**MOT by appointment while you wait**  
**Servicing, Collection & Delivery Service**

Unit 3 & 4, Lintech Court  
The Grip Industrial Estate  
Linton, Cambs  
CB21 4XN

Tel : 01223 894140  
Fax : 01223 890035  
[mhgarage@btconnect.com](mailto:mhgarage@btconnect.com)

### Designer Drapes

Tel: 01223890556

Linton rd Hadstock

*For all your Curtains & Blinds give us a call.*

Curtain alterations.	PATCHWORK LESSONS
Free measuring	Mondays and Tuesdays
Fitting service	Book your place now
Haberdashery	spaces limited
Quilting fabrics	Sewing machine repair and service
Upholstery service	Remnants and Rollends

Fabric sold by the metre

[designerdrapescurtains.co.uk](http://designerdrapescurtains.co.uk) [designerdrapes2@gmail.com](mailto:designerdrapes2@gmail.com)

### The Dog & Duck

63 High Street, Linton  
Tel: 01223 890349

Pub & Restaurant  
Open All Day, Every Day

Idyllic Riverside Thatched Pub and Restaurant.  
Hearty Home-Made Pub Food.  
Be Assured a Fantastic Welcome and a Perfect Pint!!

Free pudding with meal on Tuesday,  
Fish and Chips Special on Wednesday  
Roast all day Sunday

Check us out at  
[www.facebook.com/thedogandducklinton](http://www.facebook.com/thedogandducklinton)

### Su Matthews

Back 4 Good Practitioner  
Level 4 Advanced Pilates Teacher  
Back Care Professional

W: [www.bodydesignpilates.co.uk](http://www.bodydesignpilates.co.uk)  
E: [bodydesignpilates@hotmail.com](mailto:bodydesignpilates@hotmail.com)  
M: 07986 692334

Nina, Carl, Nicola and Sue welcome you to

## BOYZ 2 MEN BARBER SHOP

Fully air conditioned  
LATE EVENING 'TIL 8:30PM  
Wednesday

Traditional Hot towel wet shave  
no need to book an appointment.

Opening Hours:	
Monday	Closed
Tuesday	9:00am - 6pm
Wednesday	9:00am - 8:30pm
Thursday	9:00am - 6pm
Friday	9:00am - 6pm
Saturday	8:00am - 3pm

Special rates for senior citizens Tuesday - Friday only

113<sup>A</sup> High Street, Linton  
Tel: 01223 894481

## POT POURRI 97

### Minimum path length?

A BUILDER is to build five houses, arranged in a perfect five sided figure (pentagon). It is intended to have a connecting path joining all five houses.

What would be the minimum total path length if the distance between houses is 100m at the circumference of the plot?

Hint: the distance is to get from one house to any other and not via another house.

### Solution to 96 - How many numbers?

There are 998910 perfect squares and cubes between 1 and 1,000,000.

Urania

## NEWS IN BRIEF

### Guides' jumble sale success

WHEN one of the customers at our packed jumble sale asked, "Is it always like this?" I was really proud to reply that the Guide and Brownies events are always really well supported by Linton folk. Our jumble sale on 2<sup>nd</sup> March exceeded all expectations and we're delighted to say we made over £500.

One of the scarier events of the year for leaders is completion of the annual capitation return. This year we have to pay £30 per member to the association - yes, even for the smallest Rainbow - so your continued support is much appreciated. A big thank you to everyone.

Kate France

### Linton Scrabble club

LINTON scrabble club meets from 10am till 12noon on alternate Tuesdays at St Mary's Pavilion in Church Lane. The cost is £2 and dates for the summer term will be 2<sup>nd</sup> 16<sup>th</sup> and 30<sup>th</sup> April; 14<sup>th</sup> and 28<sup>th</sup> May; 11<sup>th</sup> and 25<sup>th</sup> June; 9<sup>th</sup> and 23<sup>rd</sup> July; 6<sup>th</sup> and 20<sup>th</sup> August.

For more information please call 07827 966796

### Wimpole 10K hooahh

THE Wimpole 10K hooahh Run raising funds for Marie Curie Cancer Care will be held on Sunday 19<sup>th</sup> May starting at 10am and covering a multi-terrain course through the stunning grounds of the Wimpole Estate.

There will be Goody bags, a free technical T-shirt and a post run massage for all runners, plus a grand prize for the runner raising the most amount of sponsorship over £300. Runners must be aged 18 and over and there is a race limit of 750

Closing date is 14<sup>th</sup> May and registration is on line only at [www.hooahh.co.uk](http://www.hooahh.co.uk)

There will be no entries on the day.

Hannah Hodgson  
Email [info@hooahh.co.uk](mailto:info@hooahh.co.uk)

### London Marathon soon over, get ready for Chilford run

HI ALL, I am sure you've been wondering when the announcement will be made. So here it is, or nearly. The Chilford Run should take place on Sunday 23<sup>rd</sup> June at Chilford Hall. (30<sup>th</sup> June is an alternative date).

Start training ... or carry on and watch out for more news, or email [chilford10k@gmail.com](mailto:chilford10k@gmail.com)

Thanks for supporting your local race.

Stephane Toussnel,  
[Stephane.toussnel@gmail.com](mailto:Stephane.toussnel@gmail.com)

### G. DYE & SONS

GENERAL BUILDERS,  
GROUNDWORK & MAINTENANCE,  
CONSERVATORIES & UPVC WINDOWS, KITCHEN & BATHROOM RE FITS

ALSO INTERIOR & EXTERIOR DECORATING  
REFERENCES AVAILABLE

39 The Grove  
Linton  
Cambridge  
CB21 4UQ

Tel: 01223 892089  
Mobile: 07961 342887  
[georgedye738@btinternet.com](mailto:georgedye738@btinternet.com)

Free Estimates

## TIM PHILLIPS & Co.

### Accountants

Established 1991

Independent, specialist service for:

**Small Business • Self Assessment**

**Personal Taxation**

Free initial consultation - no obligation  
**EASY, FREE PARKING**

Copley Hill Business Park, Cambridge Rd., Babraham  
Off A1307 between Wandlebury and Babraham  
Tel: 01223 830044. [www.tpaccounts.co.uk](http://www.tpaccounts.co.uk)



# The Derbyshire Post



CAN anyone tell me why it is that children in Cambridgeshire have less money spent on their education by the Government than any other place in the country? Is it because our children are considered to be less important than others or is it because a long time ago, possibly in the Dark Ages, some bureaucrat made up a rule about postcodes and deprivation factors and counties that seemed to make sense to the suits back then but no longer makes any sense to any of us now.

What on earth can they have been thinking? Teachers cost the same to employ wherever you are (apart from in London where they receive a London allowance), utilities are the same price, as are resources like books and computers. It does just cost so much to run a school, any school wherever they are.

Anyway, Cambridgeshire is now the worst funded local authority in the country, 151<sup>st</sup> out of 151, and in real terms that means that the Government spends something in the region of £500 less on each of your children per year than it does on children in other places. In spite of this, many of our schools still manage to get great results. It makes you wonder how good the results would be if a fair amount was spent on our children.

There is talk about bringing in fairer funding in the future but of course, if the funds were redistributed fairly so that children received the same irrespective of which county they live in, then there would be schools who would lose money and might howl about it. Cambridgeshire Headteachers, and especially those of us in the Linton cluster, have little sympathy for those in other counties who have had it so good for so long at our children's expense. Perhaps we need to howl too.

The Cambridge News has started its own *Fairer Funding* campaign and the heads of our local schools are right behind it. Watch out for the pictures with various members of our community wearing T-shirts with 151 on them. We need to raise the profile of this matter now, so that the problem can be addressed quickly.

Caroline Derbyshire

## History society news

THE Linton and District Historical Society talk for April will be on a little known local poet called JR Withers, whose nickname was *The Hedgerow Poet*. James Reynolds Withers was born in Weston Colville just over 100 years ago in May 1912 and there is a brass plaque in the church in his honour. As his notoriety as a poet flourished he was sponsored by several rich local ladies. One of these ladies was Anne Haylock. In 1825 her husband built her the large country house called Balsham Place as a wedding gift.

Do join us for this fascinating talk with local expert Mike Petty. There will also be a display of James' local connections in Balsham, West Wrating and Weston Colville. It will be held at 7.30pm on Tuesday 16<sup>th</sup> April in Linton village hall. There will be the monthly raffle and refreshments. All are very welcome.

Andrew Westwood-Bate

## PLANNING APPLICATIONS

S/2456/12/FL Mr & Mrs Andrew Clark, 69 71 High Street.

Demolition of existing outbuilding and construction of new replacement building.

S/2457/12/LB Mr & Mrs Andrew Clark, 69 71 High Street.

Demolition of existing outbuilding and construction of new replacement building.

S/0448/13/FL Mr Glen Meijas, **Chilford Hall, Balsham Road.**

Construction of hard-sided marquee (glass and PVC panels around a steel frame) comprising two adjoining structures of 27m x 9m and 21m x 9m (432msq), a 6m x 3m storage block and a 6m x 3.5m kitchen block (39.5msq) to enable the provision of function facilities

S/0454/13/FL Mrs D Cootes, 15 The Grove, Extension to front of house.



# The Way We Were

by Garth Collard

## The story of Sneezum's bakery

NUMBER 42 High Street was known to many as Sneezum's during World War II, the house is timber framed dating from the 17<sup>th</sup> century but re-fronted in brick in the 19<sup>th</sup> century. Various businesses have been based at this site. In 1830 Thomas Gatward ran a family watch and clockmaking business. Criminal records show that in November 1835 Thomas Barrett, a 23 year-old labourer living in The Grip, was convicted of fraudulently obtaining a watch from Thomas Gatward. Barrett pleaded guilty and was sentenced to three months hard labour.

From 1845 to 1864 Joseph Sergeant operated a business here as a chemist, stationer and book seller. One of the interesting items he sold was a three shilling (15p) book entitled, *Manhood and marriage* based on three themes outlining the causes of the premature decline of manhood, namely excessive indulgence, solitary habits and venereal infection – surely not a best seller amongst respectable citizens of Linton!

In 1865 the business was taken over by Thomas Suckling, a chemist and engineer. He was



Left: 1950s Sneezum's bakery meat pies under the arch behind the shop. Lily Morley, Jack's wife plus daughter Brenda who became Brenda Walker  
Far left: 1950s Sneezum's Commer van in front of the shop

Pictures supplied by Mrs Sneezum

much in demand as the operator of the magic lantern, a device invented in 1801 which blew a stream of oxygen through a hydrogen flame creating an intensely hot flame. The flame was directed onto the surface of a block of lime and a spot on the surface of the lime became white hot, emitting a dazzling white light to illuminate glass slides, the apparatus was extremely dangerous, liable to ignite or explode.

An interesting fact about the previous owner, Joseph Sergeant a chemist, was that he came close to burning down the premises in October 1847 with a candle. When searching the shop for a small article using a lighted candle he failed to see the flame touch a pile of paper.

He saved his shop only because when standing by the front window cracking glass alerted him to the heat of a fire which he extinguished before the fire brigade arrived.

In 1893 the local Co-op baker, Herbert Kemp, bought the premises and built a new bakehouse at the rear. He rented the shop to Robert Mitchell, a master baker from Essex.

Years ago I interviewed the late Charlie Salmon of The Rookery who was apprenticed to Mitchell at the age of 13. Charlie was paid 2/6d per week (12½ p) and worked from 4am to 8pm six days a week and to 7pm on Sundays. Mitchell employed two delivery men and one shoppirl. In those days a large loaf of bread cost 3s 4p

(about 17p).

Bertie Sneezum ran the bakery at 42 High Street from 1932 until the early 1960s. He was a master baker who won numerous medals in the Hovis competitions for producing the best sultana loaf. After that it was purchased by Dixons who closed down suddenly in 1984. The premises were purchased in 1985 by Plumridge, the local printer who converted the 19<sup>th</sup> century bakehouse at the rear into a printing workshop.

From 1965 to 1986 the shop was rented by Twiggs who also opened a coffee shop on the premises which closed in 1993. After 1986 the bakery business was run by Norths of Sawston, and the name was recently changed to Boswells.

## Your help please, do you remember?

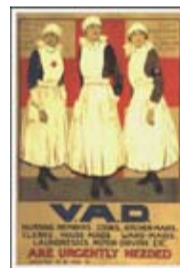
THE centenary of the Great War is only just around the corner and over the last year we have all been hearing about the 1912 war games along our local village hilltops. While researching this and the history of Hildersham village hall, which in a previous incarnation was a

surgical ward at the World War One 1<sup>st</sup> Great Eastern Hospital in Cambridge, we have come across the interesting fact that 2013 is the centenary of the VAD (Voluntary Aid Detachment) hospitals being opened in our local villages. In Linton this first opened at the old

workhouse in Symonds lane, before moving to the Manor House in Coles Lane; while in Balsham the first hospital was opened at the Green House (House on the Green) with the new village institute being used as a dining hall, recreation room and kitchen. This was so

successful that a second hospital was opened at Park House later in 1913.

There is obviously much more to find out and a presentation will be given later in the



year, but for now if you have anybody in your recent family tree who was involved with the VAD hospitals, or indeed the 1<sup>st</sup> Great Eastern hospital in any way, we would love to hear from you. Please contact Andrew at hildershamhistory@gmail.com or 892430

Andrew Westwood-Bate

**MOBILE CHIROPRACTIC SERVICE**  
GCC-Registered Chiropractor  
**ALEXANDER M SMITH**  
01223 967565  
SOUTH CAMBS AREA  
(Based in Linton)  
Effective care in the comfort of your home  
- Low back pain & sciatica  
- Neck pain & headaches  
- Muscle spasm/tension  
- Shoulder & Knee pain  
- Postural problems  
www.alexandersmithchiropractor.co.uk

**Acupuncture and Massage in Linton**  
Some of the conditions acupuncture can help ...  
• sports injury and tension  
• back, knee, hip, shoulder and elbow pain, rheumatism  
• fertility optimisation, IVF, pregnancy and menstrual  
• headache and migraine, stress  
• high blood pressure and circulation conditions  
• anxiety and addictions  
**Peter White** MBACc, MSc, MBACc.  
Call: 01223 891145 for an appointment or free assessment  
Email: enquiries@lintonhealth.co.uk

**LATEST REVIEW ON TRIP ADVISOR:**  
"The real gem, however, is the adjoining pub, which boasts some of the best-kept beers I've ever encountered. The food is a wonderful thing: a steak and ale pie was rich and delicious, and came with a little pot of homemade chutney which was just mindblowing. The atmosphere is quiet and warm - perfect for good conversation over the brimming pint glass."  
**The Pear Tree Inn**  
High St, Hildersham  
01223 891680  
peartreeinn@btinternet.com  
www.peartreeinncambridge.co.uk  
Opening hours:  
Tues-Sat open 12-2.30 & 6-11  
(food orders 12-2 and 6.30-9)  
Sunday open 12-2.30  
(food orders 12-2)  
Closed Sunday evening and Monday

**Chapel**  
Independent Financial Advisers  
SPECIALIST ADVICE ON  
Pensions - Investments - Mortgages - Protection  
Personal Financial Planning  
FREE Initial Consultation & Without Obligation  
**Ian Cross** DipPFS  
01223 892821  
email: Chapelifa@btinternet.com  
De-Salis House, 6 Hillway Linton, Cambs, CB21 4JE  
A Member Of Sesame limited Which is Regulated By The Financial Services Authority  
YOUR HOME IS AT RISK IF YOU DO NOT KEEP UP THE PAYMENTS ON A MORTGAGE, OR ANY OTHER LOAN  
SECURED UPON IT. WRITTEN DETAILS ON REQUEST

1 2 3 4 5 off to Kumon I go, at maths and English I'm a pro, all my answers are right and my future is so bright!  
**Maths and English Study Programmes**  
Kumon can help your child progress with their maths and English studies, boost their confidence and help them shine.  
Every day Kumon helps children of all ages and abilities to realise their true potential. With over 600 centres nationwide, it's convenient too.  
**Contact your local Instructor today.**  
Mrs Karen Tumber  
Linton Study Centre  
01223 893578  
kumon.co.uk  
Every child can shine

**A.J. COPELAND & CO.**  
Chartered Accountants, Linton  
Audit, Accountancy, Tax and Consultancy Services  
for Business and Individuals  
Computerised Self Assessment Tax Return Service  
For FREE initial consultation phone  
01799 506602  
Email: ajcopeland@compuserve.com  
website: www.ajcopelandca.co.uk

**Discreet Pest Prevention & Control**  
A J PEST CONTROL  
FAST AND EFFECTIVE  
PROFESSIONAL SERVICES  
COMMERCIAL - DOMESTIC - AGRICULTURAL  
National Pest Technicians Association  
• Wasps, Hornets & Flies  
• Mice and Rats  
• Fleas, Bed Bugs and Ants  
• Bird Control  
• Squirrels and Rabbits  
• Cockroaches  
Based in Linton  
Contact: 01223 530988 or 07855478824  
www.ajpestcontrol.co.uk

**MALLYON & DONALDSON**  
Linton  
Specialising in both Modern and Traditional building methods.  
Tel: 01223 891267  
Mob: 07941 220868  
All contracts finished to a high standard.  
Reliable service. Local references available.



# Parish Council Matters

## Two consultations - your views please

Parish Council Matters is written, edited and published by the Parish Council with the support of the Linton News Team.

LINTON parish council is asking for your views on two issues ... parking outside and near the Co-op, and width restriction for Back Road to Hildersham. The parish council has agreed to investigate solutions in each case, but exactly how we progress has yet to be decided. Here are our suggestions, and these have been brought before you in consultation with Cambridgeshire county council (CCC) highways. We value your views and will make a final decision once consultation ends. This is a true consultation where your views really can make a difference. It may be that we do not do anything at all, if that is the overwhelming view ... so please have your say.

### Co-op parking scheme

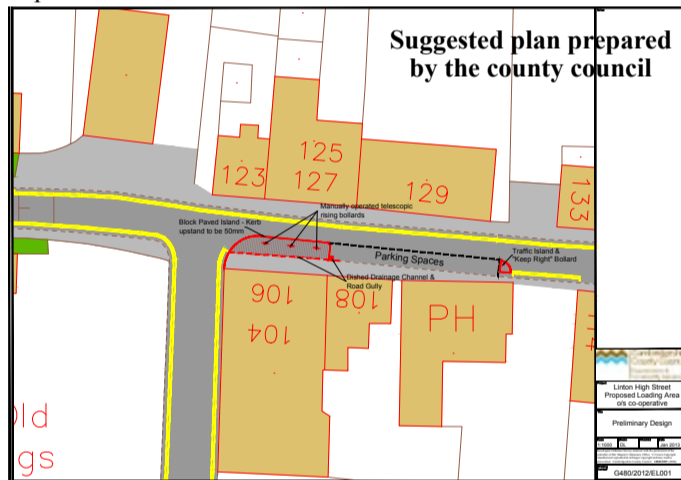
THE Problem ...

For many years there have been complaints of inconsiderate parking outside and near the Co-op. There are yellow lines in the area to stop such parking but these are ignored by some. Parking on the yellow lines outside the shop causes sight obstruction for those exiting Green Lane, and also prevents delivery lorries for the shop from being able to park and unload. This can cause major disruption especially in the morning peak time. Parking on the yellow lines opposite (outside the old Princess of Wales) also adds to the parking problem and traffic flow. There have been many occasions when buses cannot get through, and have had to wait for shop customers to return to their vehicles.

Another problem is that there seems very little turnover of vehicles and that once parked along the stretch from the Co-op to the Waggon & Horses, they are there all day, thus preventing customers for the Co-op and dentist being able to legally park along there and enticing some to park on the yellow lines. There is, of course, parking in Green Lane which many use when unable to park in the High Street.

A Potential Solution ...

CCC highways have suggested that a specific loading area is a possibility, with collapsible bollards installed to stop vehicles parking where the yellow lines are now. The yellow lines would be removed. The Co-op would be able to lower the bollards for delivery lorries. The Co-op has been consulted on such a scheme and was in total support because of the difficulties the shop has at present with deliveries.



It was suggested that if such a scheme was progressed it would be possible to open up the area for residential parking after Co-op deliveries were completed for the day. The last delivery is around 3pm. This would involve a bollard being kept erect at the end of any such parking zone at the end nearest to Green Lane but in such a position as to stop any parking and allow visibility for safe exiting from Green Lane. The other bollards would be lowered. It was considered that extra parking after 3pm would be very beneficial with respect to villagers trying to access the Co-op and

Cllr Roger Hickford, parish council chairman

dentist after school and after work. It has been suggested there should be a time restriction on parking in this zone. Comments from the chair ...

I personally would like to see the Green Lane end bollard slightly nearer to the junction, to definitely prevent anyone trying to park right on the corner. Also, as is much the case across our community, enforcement could be an issue but with defined parking times and community information and education I hope the need for any such action would be limited. This is a very difficult issue, with no easy solution and concerns from residents have been brought before council numerous times.

At the meeting of 7<sup>th</sup> February the parish council agreed to consider this and would like views from residents by Tuesday 30<sup>th</sup> April.

Cllr Roger Hickford

### Back Road between Linton and Hildersham

THERE has been much concern in recent years with regards to Back Road between Linton and Hildersham. This road is used by many from the village as an alternative route into and out of the village onto the A1307 or north for Balsham and the A11. The road is narrow and twists with high banks and has blind corners particularly in the summer when the crops and verges have grown. Concern has been raised about speeding along this stretch, and the fact that it is sometimes easier to drive the route at night when oncoming headlights are evidence of another vehicle.

The biggest concern is the actual state of the road, and the very evident potholes and ruts at the edges. Back Road along this stretch has protected verges, due to the wildlife that use this rare chalkland habitat, but these verges are being eroded away by vehicle tyres, especially when one vehicle meets another. HGVs use this route also, and when one lorry meets another the verges suffer greatly.

Hildersham parish council approached me and asked for my help in arranging a meeting with highways. This I did and a summary of that meeting follows:

"A meeting took place on Wednesday 30<sup>th</sup> January 2013 between Linton parish council, Hildersham parish council and county council highways, to discuss safety issues and verge protection for Back Road.

A previous comment from the county councillor was discussed where it stated that no restrictions could be placed on Back Road, and nothing could be done about HGVs using the road. This was not the case.

The verges were suffering badly, especially when an HGV meets a car, or even worse meets another HGV. Could HGVs be banned, except for access (farm machinery etc)? The answer was yes, but enforcement could be an issue. Highways suggested a width restriction would be better. This would, by its very nature, stop unauthorised HGVs accessing the road, and residents, emergency services and the two parish councils would be keyholders. Bollards could then be laid flat when required for access by larger vehicles.

### Annual parish meeting Tuesday 23<sup>rd</sup> April 2013

THE annual parish meeting is to take place on Tuesday 23<sup>rd</sup> April at 7.30pm in the village hall. The annual parish meeting is not a council meeting, it is a meeting of the parish electorate.

12 months, and will also present its audited and unaudited accounts for the year.

All local groups who received a charitable grant from the parish council in 2012 will be invited, so that they can report on what they used the money for. Also invited will be the successful applicants who have been awarded grants in 2013, and their cheques will be presented at the meeting.

Any other organisations are welcome to report on their activities.

Parish council

The purpose of this meeting is for the parish council to communicate and explain its various involvements over the last year. It also enables the electors to have their say on anything which they consider is important to the people of Linton. The council will review its activities from the previous

The width of the road was discussed. The road cannot be widened without losing more protected verge. It was unclear to drivers exactly where the edge of the road was, and that in the past white lines defined the edges. Drivers then could easily define the edge of the road and drive more appropriately.

Speeding was also discussed, and it was agreed that drivers generally drive to the speed of the road conditions. It was also agreed that by installing a width restriction it would automatically give a signal to drivers that the road maybe needed extra attention.

There was no official diversion route for the A1307, and that Back Road suffered every time there was a serious accident on the main road. It was considered that, if width restrictions were installed via bollards, the management of traffic might be a possibility in certain instances because Back Road could be made a temporary one-way whilst the accident was being attended and sorted.

The meeting considered the width restriction as a solution to restricting HGVs, protecting verges and possibly slowing vehicles down on that stretch of road. It might also assist with traffic management when the A1307 is blocked/closed.

The cost of the scheme to be no more than £5,000, and that there may be some funding available, especially because there were two parish councils involved, and that a width restriction would actually save CCC in the long run because repairs would not need to be carried out so frequently. The white lining will be left until the road was repaired properly, especially the edges, and that this would be good if it was done at the same time, or soon after, any width restriction put in.

The parish council to consider the installation of a width restriction on Back Road, from the Hildersham crossroads to the Linton 30mph sign, at a maximum cost of £5,000, and to go out to public consultation."

#### Evidence of problems on Back Road



Pictures taken by Roger Hickford

At the meeting of 21<sup>st</sup> February the parish council agreed to consider this. The parish council would like views from residents by Tuesday 30<sup>th</sup> April.

Cllr Roger Hickford

Made to Measure  
**CAPRI BLINDS**  
\* Verticals \* Roman \* Roller \* Pleated  
\* Venetian \* Wooden  
**CALL NOW FOR**  
free quotation - free measuring - free fitting  
*Blackout blinds in a range of colours always available*  
Tel: 01223 894020  
www.capriblinds.co.uk

**GLENWOOD BOLTS & SCREWS LTD**  
www.glenwoodbolts.co.uk  
  
SUPPLIERS OF QUALITY FASTENERS, FIXINGS & SILVERLINE TOOLS  
Unit 2 Lintech Court  
The Grip Industrial Estate, Linton  
Cambridge, CB21 4XN  
Tel: 01223 892095 / 893931  
Fax: 01223 894122

*Elite*  
Wedding Photography™  
Professional wedding photography since 1969  
**Let your memories last a lifetime**  
At Elite Wedding Photography our goal is to capture your wedding day to the highest standard.  
Tel: 01223 892056  
eliteweddingphotography.co.uk

DRIVES & PATIOS  
HOUSE EXTENSIONS  
HOME IMPROVEMENTS  
PAINTING DECORATING  
**A & T Groundworks Ltd**  
FRIENDLY SERVICE LARGE & MINI DIGGERS FOR HIRE  
Call Ashley on 01799-520298 - Mobile 07803745637

**HAIR BY JO DENNY**  
Women | Men | Children  
41 Linton High Street  
(Behind North's Bakery)  
t: 01223 893 285  
**MOPS HAIR SALON**

Carpentry, Plumbing, Tiling  
Door/Window Replacement  
Kitchen/Bathroom Refitting  
Fencing & Decking  
Painting/Decorating  
Flat Pack assembly  
Property Maintenance  
**Steve Jackson**  
stevejacksonltd@hotmail.co.uk  
Aerial Upgrades & installations  
Satellite dishes installed  
Steve Jackson  
Office 01223 893896  
Mobile 07963 854653

**B Haylock**  
Wood Flooring & Carpentry  
Supply and installation  
Free quotations  
Home viewing of samples  
Mob: 07734057520  
Tel: 01223 890418

**GEOFF NORBY**  
Reg No. 34107  
**PLUMBING & HEATING ENGINEER - Estd. 1966**  
All aspects of Central Heating and Plumbing  
Boiler Service & Maintenance  
Bathroom Suites & Power Showers  
Kitchen Installations - Tap Washers  
Telephone 01223 892311  
Mobile 07885 068047  
geoffnorby@tiscali.co.uk

# Council minutes council minutes council minutes council minutes

ABBREVIATED minutes of the meeting of the parish council held at the Cathodeon Centre on Thursday 7<sup>th</sup> February 2013.

**Present:** R Hickford (chairman and district councillor), Mrs E Bald (vice chair), D Champion, Ms E Cornell, Mrs S Dew, Ms T Hunt, B Manley, Ms M Mannassi, D Penfold, G Potter, P Poulter, K Wakley, Mrs A Walker, Mrs J Wilson and Mrs S Parry (clerk). Mrs K France (press) was also in attendance with four members of the public.

**Apologies for absence:** Councillor Cox.

**Disclosure of interest:** Cllr Champion declared an interest under the proposed Co-op parking scheme written report as a blue badge holder.

Cllr Potter declared an interest under the pavilion item as a football club volunteer.

**Chairman's comments:** The chair reported that South Cambridgeshire district council's (SCDC) decision to approve the planning application for the redevelopment of the police houses site was a matter of grave concern. Policy CH10 which opposed development to the south of the A1307 had been overruled for this application due to national policy for addressing housing shortage. The county council highways department had supported the development and ignored the impact of a possible 69 extra vehicles queuing to enter the village in the evening with no safe right-hand turn into the development. The national planning policy framework stated that councils must have five years' worth of housing stock but SCDC only had 2.5 years and therefore could not refuse extra affordable housing.

**Precept for 2013/14:** Cllr Champion proposed that £158,336 be requested as the precept figure for 2013/14. The proposal was seconded by Cllr Hunt and resolved by the meeting.

**Pavilion:** The chair explained that recently the pavilion had been hired out and those hiring it had flouted the rules by bringing too many cars on to the recreation ground to park. This was a serious safety issue and totally in breach of the rules of the pavilion hire. Cllr Manley had issued a report in mitigation which included an apology on behalf of the football club and a proposal at the next football club meeting to introduce a booking form which would give clear instructions regarding access, parking and the delivery of goods and equipment to the pavilion. This would have to be signed by the hirer and strictly observed, a deposit would also be taken; failure to comply would result in the loss of the deposit and the facility being immediately withdrawn and the bar closed. Robin Williams, Alan and David O'Dell were present on behalf of the football club and reiterated these points.

The Chair thanked them for attending and for their welcome response to the incident.

**Written reports:** Cllr Poulter had issued a report on the neighbourhood plan (NP). Cllr Poulter proposed that the parish council resolved to hold formal discussions with Hildersham and Bartlow parish councils with a view to agreeing a wider designated area for a joint NP within four weeks; with a view to submitting the agreed designated area to SCDC at the end of a further six weeks together with all necessary plans and supporting documents. The proposal was seconded by Cllr Bald and resolved by the meeting.

Cllr Walker left the meeting at 8.55pm.

The annotated drawing regarding the proposed parking scheme outside the Co-op was considered prior to public consultation. Cllr Hickford had brought this before council due to the continuous concerns raised by residents. Cllr Champion was concerned that there was no provision for disabled parking. It was noted however that blue badge holders could legally park on double yellow lines for up to three hours. Discussion as to whether there should be a limit on some parking bays of up to two hours was also discussed. Concerns were raised that this may disadvantage residents who had no allocated parking. Cllr Potter thought the drawing to be inaccurate in respect of footpaths and walls. It was noted that no decision on these issues would be made until after public consultation. Cllr Hickford reiterated this would be a very public consultation where residents' would have input. Those residents living between the 20mph signage at the junction of the

High Street and Balsham Road, including Green Lane and down to the junction of Mill Lane would be contacted individually.

**Correspondence received for consideration:**

A resident had requested a village webcam. After consideration it was agreed that there appeared to be no benefit to the community to proceed with this suggestion at the moment.

Residents had written regarding safety concerns in Hadstock Road. The county council had agreed to fill the potholes, remove vegetation from around the 30mph sign and to clean out the gullies. The county council had also offered to cut the hedge back hard to aid visibility but they were concerned that this would encourage faster driving and exacerbate any problem. It was agreed to support the views of the county council for safety reasons and oppose the cutting back of the hedge. The police would be contacted to request that speed checks be carried out.

## LINTON PARISH COUNCIL

Linton Village Hall, Coles Lane, Linton,  
Cambridge CB21 4JS Tel: 891001

Clerk to the council – Mrs Sue Parry  
Email: lintonpc@btconnect.com

Website: www.lintoncambridgeshire-pc.gov.uk

**Office hours: Monday 9am–12noon and  
4–5.30pm, Tuesday–Friday 9am–12noon**

*Or by appointment*

Dates for full council meetings:

11<sup>th</sup> April, 9<sup>th</sup> and 23<sup>rd</sup> May

All meetings held at the Cathodeon Centre  
commencing at 8pm

ABBREVIATED minutes of the meeting of the parish council held at the Cathodeon Centre on Thursday 21<sup>st</sup> February 2013.

**Present:** R Hickford (chairman and district councillor), D Champion, Ms E Cornell, Dr B Cox, Mrs S Dew, B Manley, Ms M Mannassi, G Potter, P Poulter, K Wakley, Mrs A Walker and Mrs S Parry (clerk). County councillor J Batchelor, district councillor Mrs T Bear and Mrs K France (press) were also in attendance with one member of the public.

**Apologies for absence:** Councillors Bald, Hunt and Wilson. Cllr Penfold was also absent.

**Matters arising from the minutes of the meeting held on 7<sup>th</sup> February:** Under the draft pavilion lease item, Cllr Manley reported that the proposed draft lease appeared to bear little resemblance to the original lease. The clerk replied that legal advice had been sought and that the current lease was poorly drafted, inadequate and must contain certain prescribed clauses which were standard precedent in practical law for landlord and tenants.

**Written report from county councillor Batchelor:** Noted.

Concerns were raised that no funding had been forthcoming to mitigate the effect on the A1307 of development in Haverhill. Cllr Batchelor replied that this had always been the case at the county council in respect of cross border funding, and that there was a request for CCC to object to every future application that did not provide s106 funding. The chair replied that he had written to the county council regarding their failure to respond to proposed developments. He also criticised their handling of the proposed development at the police houses site in respect of the lack of a ghost right turn and their indifference to policy CH10.

**Written reports from district councillors Bear and Hickford:** These were noted.

The correspondence item from South Cambridgeshire district council regarding the loss of local green spaces (LGS) was discussed and it was noted that the parish council had failed to respond to the consultation which had included LGS, important countryside frontages (ICF) and the chance to extend the village framework.

Cllr Cornell proposed that the parish council requested that the following be considered as ICFs: Fields off Balsham Road leading

to Water Tower - special scenic interest, Rivey Hill, Land from the A1307 to Catley Park, Borley Wood area to Roman Road – Heath Farm area, Land either side of footpath to Lt Linton via clapper stile (horse paddocks). With the recreation ground – section west of pavilion to clapper stile, village green (Camping Close), and Glebe Land and possibly Linton village college playing fields, Flemings Field – opposite side of the river to Pocket Park, and Grip Meadows be considered as LGS. The proposal was seconded by Cllr Wakley and resolved by the meeting.

**Churchyard update:** Cllr Cox explained the history dating back to 2004 when the parish council resolved to adopt the churchyard. At the time it was known that this would be a very costly exercise with most of the flint walls in need of repair. Currently only the northern and western walls were in need of attention. Approximately £1300, which had been budgeted for, would be required to repair the northern wall but the cost to repair the western wall was unknown. Cllr Cox would seek estimates for this work and report back to council so that a more informed decision could be made.

**Consideration of possible safety measures in Hadstock Road:** Mrs Kate Clark, a resident of Hadstock Road, outlined her concerns regarding speeding in Hadstock Road. She asked that pinch points be installed along with better signage, with possibly a flashing sign at the stone bridge. The clerk responded that any form of traffic calming required street lighting; currently each lamp post costs in the region of £1500 plus connection and flashing signs in the region of £5000. The chair responded that although sympathetic to her concerns similar requests from other residents had been refused. Suggestions were made for: a countdown to the 30mph sign, a wire speed counter and also for speed counters on Horseheath and Balsham Roads. All suggestions would be taken to highways. The police would be asked to continue their speed checks.

**Consideration of possible safety measures in Back Road:** The report from Cllr Hickford was noted. The cost stated in the report was a maximum as it was hoped highways and Hildersham parish council would contribute. Proposal: To consider the installation of a width restriction on Back Road, from Hildersham crossroads to the Linton 30mph sign, at a maximum cost of £5,000 and to go out to public consultation. The proposal was seconded by Cllr Cox. A vote took place with nine votes in favour and one vote against. Proposal carried.

**Allotments update:** Cllr Hickford reported that he had met with the Allotments Association regarding the proposed site adjacent to Lonsdale. The site identified was around seven acres and highways had raised concerns about any development on the site, but on closer scrutiny it appeared these concerns were not quite as severe as all the other sites in that area. The parish council had agreed to compulsory purchase the site, had asked the Diocese investment committee to enter negotiations, and had heard nothing back to date. The chair now wondered if there was any mileage in discussion with the Diocese regarding small scale development linked to allotment provision and general community benefits. Cllr Poulter declared an interest as a resident of Lonsdale. He was totally against any discussion and felt that the parish council ought to continue with the compulsory purchase scheme. The Allotments Association would be asked to confirm how much land they required and to submit a sketch and a business plan. It was agreed that the parish council would wait until 21<sup>st</sup> March by which time if there was no on-going robust negotiations with the Diocese that would benefit the community, the parish council would start compulsory purchase proceedings, as the Allotment Association information would be available by that meeting.

**Correspondence received for consideration:** A request from Chalklands friendship club for a donation of £200 to replace the dishwasher in the community building was considered. Cllr Potter proposed that £200 be awarded from this year's s137 budget. The proposal was seconded by Cllr Cornell and resolved by the meeting.

*Note: Copies of the full minutes, reports and documents referred to above can be inspected at the parish council office.*

**Linton Cabs TAXI**

Pre-book only Linton based taxi service

Airports - Train Stations - Local Travel

Tel: 07958 657300 / 01223 890965  
Email: lintoncabs@btinternet.com

**DACRE LONG**  
Local Painter and Decorator

66 Chalklands, Linton

Professional work to highest standard for over 15 years

Trade and Private Customers

Free quotes with written specification

Phone 01223 893176  
or 07837513837

Discounts for Senior Citizens

**AJB FENCING**

www.ajbfencing.co.uk

Fencing - Decking - Gates  
All Groundworks  
Free Quotations  
Quality Service

01223 894795  
07813 070542  
andy@ajbfencing.co.uk

**THE ROOM**

37 Bartlow Road, Linton  
Tel: Pippa (01223) 890890

**Students 20% off**      **Special Kids Prices**

**OPENING TIMES**

<b>Mon</b> Closed	<b>Senior Citizens</b>
<b>Tues</b> 9-5 pm	<b>Tuesday &amp; Wednesday</b>
<b>Wed</b> 9-7 pm	<b>Late opening until 7 pm on</b>
<b>Thurs</b> 9-7 pm	<b>Wednesday &amp; Thursday</b>
<b>Fri</b> 9-5 pm	
<b>Sat</b> 9-3 pm	

**LEARNING DIFFICULTIES STUDY SKILLS TUTOR**

I offer tutoring in practical learning skills and strategies for Primary and Secondary school students and adults

I am an experienced and successful teacher at Secondary / 6<sup>th</sup> form, with a background in Psychology, Research and teaching at Cambridge University

**Contact Sheila Bennett**  
Tel: 01223 890171

**CHRISTOPHER MARKHAM**  
HOME & GARDEN SERVICES

Interior/Exterior Decorating  
Fencing, Guttering  
Turving, Garden Clearance  
Lawn & Hedge Cutting  
Decking & Patio Cleaning  
Patios & Driveways

Call on  
**(01223) 892889**  
or **07973294946**  
No job too small...

**PLUMBLINE**

**PLUMBING AND HEATING ENGINEER**  
PROFESSIONAL DOMESTIC PLUMBING SERVICE

Including Property Maintenance  
Painting: Tiling: Plastering: Carpentry

**Call John on**  
**01223 893903**

Supcik@talktalk.net  
Fully Qualified and Insured

Friendly and Reliable Service    No Job Too Small

**Watkins Joinery**

- FITTED KITCHENS / BEDROOMS / WARDROBES
- CABINET MAKERS
- BESPOKE JOINERY
- DOORS / WINDOWS / STAIRS
- WOODEN FLOORING
- CONSERVATORIES
- EXTENSIONS / REFURBISHMENTS

20 YEARS' EXPERIENCE  
INSURANCE WORK  
UNDERTAKEN

**Tel.: 01223 890600 Mobile: 07802 885390**  
colin.watkins@keme.co.uk