

The next ACE event is the trip to Norwich on 25th February. See page 4 or ring Enid on 891069

Established 1987

Over 2,350 copies distributed free in Linton, Hildersham, Hadstock & Bartlow

THE LINTON NEWS

www.linton.info e-mail lneditor@linton.info

February 2014
Vol. 27 N° 11
Publication date
Monday 3rd February

E & E PLUMRIDGE
Design & Print
41 High Street
Linton
01223 891407

The sad demise of The Pear Tree at Hildersham

VERY sadly, after more than 150 years of successful trading as a village pub and being rewarded the status of Community Asset by South Cambridge District Council, the Pear Tree in Hildersham has been closed by its owner and converted to a shop selling second-hand furniture.

The current owner took over the pub in April 2012 and got off to a good start. However, after 15 months of trading, the Pear Tree closed and a crude notice behind the door stated this was due to the failure of the cellar cooler. The owner claimed there would be a delay in reopening whilst the pub was modified and whilst funds were raised for the £3,000 repair to the cooler. The months dragged by and the curtains remained closed and the door boarded up.

By chance, at the beginning of December, the village happened to find out that a lawful development notice had been submitted by the owner to SCDC, informing them that the pub would be changing its use to a shop. However, at the same time, an article in the Times newspaper printed a

walking route mentioning the Pear Tree. This stated that it would be reopening in February. Behind closed doors and with no communication to the village, the interior of the pub was being ripped out. The action of the owner is perfectly legal. No consultation is required with the local community as a major loophole in the planning laws allows pubs to be changed to shops, banks and even dentists' surgeries without any planning permission. This can prove a good stepping stone for an entrepreneur whilst having a devastating impact on a small community.

The residents of Hildersham and neighbouring villages rallied immediately and a campaign was very quickly underway. Special thanks go to our friends at NextNorth in Linton who set up our website and enabled us to reach a huge audience very quickly.

A group from the village expressed interest in buying/leasing the pub from the owner and she agreed to sell it, for a sum nearly twice its commercial value. The only option available to the village was to ask SCDC to impose



The Pear Tree in Hildersham as it used to be

Picture by former landlord Paul Fisher

an Article 4 Directive on the owner to force her to request change of use through a formal planning process, thus allowing the community an opportunity to object. Nearly

700 people signed petitions urging SCDC to plug this loophole and issue an Article 4 Directive to force a formal planning process. A large group attended the planning meeting at SCDC on 8th January but to no avail. SCDC was sympathetic to our plight, but despite the Localism Act which gives them powers to protect local communities, the committee decided not to apply an Article 4. In the face of such opposition to this change and the protests from CAMRA and MPs, this seems a rather baffling decision.

Until the meeting that morning, the Pear Tree had remained firmly closed and boarded up, but on 6th January a planning officer visited the premises and confirmed that it was now trading as a shop selling second hand items, many of which are recognisable pieces of furniture from the pub. Once the planners had stated it was a viable trading business, the owner knew they would not be issued with an Article 4.

The door of the new shop was briefly opened for trade on 8th January and again on 10th January. On 13th January, we woke to a new handwritten notice on the door stating that the shop was closed for refurbishment.

Mark Logan, Chairman, Save the Pear Tree campaign group

Lizzie's comes to Linton



Lizzie waiting to give you a warm welcome at the salon

Picture by Julian

AFTER 25 years it is with huge excitement that Lizzie's Health and Beauty has relocated from Saffron Walden to Linton.

Lizzie opened her Saffron Walden salon in September 1988 at the age of 19. Over the years she has built up a loyal client base, most of whom have followed her to Linton and she is looking forward to welcoming many new clients.

Lizzie's offers a wide range of treatments including waxing, electrolysis, massage, facials, manicures, pedicures, spray tans and the latest OPI gel nails.

The salon is situated above Linton Kitchen on the High Street. As you enter the reception area you will immediately feel the calm atmosphere that she has created. The brand new décor has a relaxing but professional feel to it. The salon boasts two fully equipped consulting rooms and a separate unit for the St Tropez spray tan booth.

You will be met by friendly and professional staff. They will be more than happy to make you feel completely at home and answer any questions you may have. The girls are excited to be in Linton and would like to thank everyone for making them so welcome. Do pop in and have a look around, or alternatively give us a call to make an appointment. To see our monthly special offers please view us on Facebook or lintonlizzie2013@gmail.com.
Lizzie Harris,

Send in the clowns

NINETEEN year-old Emily Edgar of Back Road, Linton was part of the Saffron Walden and District Riding Club team which won the British Riding Club Quadrille of the Year title at the London Olympia International Horse Show on 21st December with a *Send in the Clowns* routine.

Dressed in colourful red, blue, green and yellow clown costumes with heavy coloured make-up, the team displayed precise formation riding sequences of controlled horsemanship in time to music. The ponies were fitted with complementary coloured bridles and leg bandages. Emily and fellow team mate Suzannah Engelmann included a clown tumbling act in the centre of the ring while their ponies were trotted round ready for the clowns to vault into the saddles to continue the display.

As the youngest member of the team, Emily said that although she was nervous before the event, she enjoyed every



Emily and horse clowning around

Picture supplied by Diana Edgar moment and was thrilled to be part of the winning team. LNT

Watoto children's choir to visit Linton

WATOTO means *The Children*, and through their inspirational songs and compelling stories, Watoto Children's Choirs are spreading a message of hope for Africa's children.

Since 1994, the choirs have toured internationally as ambassadors for Watoto Child Care Ministries, a holistic orphan care programme based in Kampala, Uganda. *Concerts of Hope* inform people of Watoto's vital work and offer audiences the opportunity to participate in restoring hope and dignity to some of Africa's most needy children.

The choir's music and multimedia presentation is a soulful fusion of gospel and contemporary African style. Dressed in colourful costume, the children's enthusiastic song and energetic dance has moved audiences world-wide. In recent years Watoto Children's Choirs have had the privilege of singing for Her



The Watoto children's choir who are coming to Linton

Majesty the Queen at Buckingham Palace, in the House of Parliament, the White House in Washington and also at the Commonwealth Heads of Government Meetings in Kampala.

Now it's Linton's chance to enjoy the choir's music. They will be performing at 7pm on Wednesday 12th

Picture from the press release February at St Mary's church. Entry is free but a collection will be taken and there will be a chance to buy CDs and other merchandise. For more information on this event contact me on 890921.

For more information about the choirs please visit www.watoto.com
Pam Richardson

Too good for jumble...

A GENTS bike Incisor Virus, 26 x 1.95 wheel, good condition, Table tennis table (child's) + balls + net, a small snooker table (child's) on a frame, eight stacking metal chairs with black padded back and seats, a high chair, converts to low chair, bright plastic, good condition, a pair of ladies new green Matalan linen blend trousers size 16, a pair of unworn ladies TU navy trousers size 16R, the Hewlett Packard Deskjet 930C printer with set up disk and a black plastic dustbin.

The Bose speakers raised £30 for the British Heart Foundation.

To buy any of the above or to offer an item to profit a charity, please contact Kate France on 891602 or email kfrance@profsoundconsult.com
NB: The donor chooses the charity to receive the money.

LNT

Vote now to win £100k for Linton

FOLLOWING the article in last month's Linton News, now is your opportunity to make a lasting contribution for Linton. Register your vote on Facebook before 28th February for Linton Granta to win a £100k award. To vote for Linton Granta go to the facebook page below and follow the simple steps given there, <https://apps.facebook.com/budweiserclubfutures>

To recap, Linton was the Eastern Regional winner in a

national competition sponsored by Budweiser Club Futures and won a grant of £50k. Linton now goes forward with the other seven regional winners to compete for one award of £100k. The award would be used to help complete the building and refurbishment already underway and provide a much improved and more extensive sporting, meeting and social facility for Linton.

The additional money will

make the pavilion a much more pleasant and accessible environment for all ages and help extend the range of user groups and activities still further. If we are lucky enough win the £100k, villagers will be asked for other ideas.

All you need is a Facebook account and one simple click. Please help a friend or relative join Facebook if they are interested.

Brian G Manley, Paul Poulter

Guides' Jumble Sale

ALTHOUGH some of the charity bags delivered round the village with requests for clothes, shoes and blankets are for registered charities, many are for businesses that make a profit by selling in the markets abroad – not always even in third world countries.

The Guides' jumble sale on 8th March at the Infant school is to raise money for the £30 annual capitation fee we have to pay for each member of Linton Guides.

Your support in turning out your unwanted items is much appreciated. Items will be gratefully received in the hall from 10am on the day. If you have jumble to be collected, please telephone 891602 or 891925 to arrange a convenient time.



Miss Malone's magical office



The Linton Heights fundraising team

Picture supplied by the school

ON 21st November 2013 we, the pupils from Year 6, asked Miss Malone if we could have a cake sale to raise money for Cancer Research UK and Bury Hospice. Miss Malone explained that she was asked about cake sales almost every week and how cake sales don't raise a lot of money. So we had a meeting in Miss Malone's office and we came up with many ideas such as jumble sales, fun runs and even book sales.

Miss Malone suggested that we all became the Linton Heights fundraising team. We were so excited when she told us we would be part of a school council. We were handed our badges straight away. As members of a new school council team, we had to find representatives across the school. Each member of the fundraising team now has a different class and representative. We also had to create a power point presentation to show to the school.

At the end of the conversation with Miss Malone, we decided we wanted to host a bake off. A bake off is when people from the school bring in their cakes and bakes. They get tested on presentation and taste. As a result, on 14th February we are hosting a bake off together with, we hope, a red clothing day. Afterwards we will have a cake sale with the cakes that didn't win. The money raised by the bake off will be announced in assembly on Monday 24th February. So Miss Malone's office really is magic.

Saffron, Izzy, Ella O, Ella G, Nathan, Freya and Amber Year 6

Storytime is back – bring your little ones to the library

STORYTIME for the under fives will again take place in the library on Tuesdays during term time.

This will be from 2pm to 2.30pm.

Bring your youngsters along for half an hour of stories and fun.

It's free – no need to book.



Parents/carers to stay with children.
Storytime is organised by volunteers with the support of Cambridgeshire Libraries.
Anne Worthington

Springfield House B&B
14/16 Horn Lane, Linton
River views from bedrooms & guest lounge
Tel: 01223 891383
www.springfieldhouseinton.com

KJL Roofing
All roofing repairs, lead-work, renewal of pitched or flat roofs
New guttering, repairs/unblocking
Free estimates before any work commenced
25 years + Experience
Tel: 01223 892542
Mob: 07958 618440

A.J. COPELAND & CO.
Chartered Accountants, Linton
Audit, Accountancy, Tax and Consultancy Services for Business and Individuals
Computerised Self Assessment Tax Return Service
For FREE initial consultation phone 01799 506602
Email: ajcopeland@compuserve.com
website: www.ajcopelandca.co.uk

Discreet Pest Prevention & Control
A J PEST CONTROL
FAST AND EFFECTIVE
PROFESSIONAL SERVICES
COMMERCIAL - DOMESTIC - AGRICULTURAL
⊙ Wasps, Hornets & Flies
⊙ Mice and Rats
⊙ Fleas, Bed Bugs and Ants
⊙ Bird Control
⊙ Squirrels and Rabbits
⊙ Cockroaches
Based in Linton
Contact: 01223 530988 or 07855478824
www.ajpestcontrol.co.uk

CHRISTOPHER MARKHAM
HOME & GARDEN SERVICES
Interior/Exterior Decorating
Fencing, Guttering
Turfing, Garden Clearance
Lawn & Hedge Cutting
Decking & Patio Cleaning
Patios & Driveways
Call on
(01223) 892889
or **07973294946**
No job too small...

Chapel
Independent Financial Advisers
SPECIALIST ADVICE ON
Personal Financial Planning – Pensions
Investments - Mortgages – Protection
FREE Initial Consultation – Without Obligation
Ian Cross DipPFS
01223 892821
E-mail: ian@chapel-ifa.co.uk Website: www.chapel-ifa.co.uk
De-Salis House, 6 Hillway, Linton, Cambridge, CB21 4JE
Chapel Independent Financial Advisers LLP is a limited liability partnership which is authorised and regulated by the Financial Conduct Authority
Registered in England & Wales No. : OC350431

Designer Drapes Tel: 01223890556
Linton rd Hadstock
For all your Curtains & Blinds give us a call.
Curtain alterations. PATCHWORK LESSONS
Free measuring Fitting service Mondays and Tuesdays
Book your place now
Haberdashery spaces limited
Quilting fabrics Sewing machine repair and service
Upholstery service Remnants and Rollends
Fabric sold by the metre
designerdrapescurtains.co.uk designerdrapes2@gmail.com

DRIVES & PATIOS
HOUSE EXTENSIONS
HOME IMPROVEMENTS
PAINTING DECORATING
A & T Groundworks Ltd
FRIENDLY SERVICE LARGE & MINI DIGGERS FOR HIRE
Call Ashley on 01799-520298 - Mobile 07803745637



Riddle time at the Infant School



AFTER the storms and floods of January, February is now here. At the time of writing this, the sun is shining and the sky is blue, I wonder what the weather will be doing when this is published?

Our themes are certainly inspiring our children. Have you been for a family walk yet and trip-trapped over any bridges? Did you get a surprise? Every inch of our school is used to inspire the learning and our corridors are no exception. The staff worked incredibly hard over the Christmas break with one corridor now underground, another under a bridge and the other is Riddle Road where a series of riddles need to be solved to walk along it.

Why not have a go at solving a few riddles yourself...of course, you will need to work out the phonic code too. The riddles below have been created by our Year 2 children:

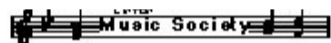
"Who am I? My back is covered with spikes. I am worm bluded and I like to ete bugs and werms. All of me is ether blkc or wite. I hibernate in the winter time but befor that I gather lots of bugs." By Priya.

"Who am I? I like eating mise and uthter small creachas. I have raiser sharp teeth. I sleep in the morning. My ears are very pointy. People think I live in caivs. I hang upside down when I sleep." By Jocelyn.

We have had some exciting news here at the Infant school. I am pleased to announce that Mrs Sarah Creagh and her husband are expecting their first child. Sarah's baby is due before the end of the academic year and so we are looking to recruit a new teacher to cover her maternity leave.

Louise Clark, Head Teacher

Linton Music Society welcomes the Nemtsov Duo



OUR next concert features the Nemtsov Duo with Mikhail Nemtsov on cello and Elena Nemtsova on piano.

The Russian brother and sister duo has performed in major concert halls in St. Petersburg and London, as well as making an outstanding hit this year at the Edinburgh Festival. The Times music critic wrote of them that the duo was 'in a league of its own'.

The varied and virtuoso music being played will be Britten's Cello Sonata, Chopin's Introduction and Polonaise Brillante, Glazunov's Minstrel's Song and Spanish Serenade and Rachmaninov's Cello Sonata.

The concert takes place at 7.30pm on Saturday 8th February at Linton Village college

Tickets are priced at £12 for adults, £10 concessions, £24 for a family of two adults and two children and £2 for students under 18. These are available on the door or from Sweet Talk News at 77 High Street, from Saffron Walden Tourist Information Office telephone 01779 524002 or online at www.saffrontickets.com.

For more information contact me at lindabird@waitrose.com

Linda Bird, Secretary

Quiz and Chips is back, pens at the ready...

LINTON Infant PTFA will be holding its annual Quiz and Chips night at 7.30pm for a 7.45pm start on Friday 28th February in the Infant school hall. Please save the date.
Tickets will be available from the Infant school office.
Linton Infant PTFA fundraising team

Bumps to Babies enjoy Christmas



Santas, elves and snowmen having chrimbo fun

Photograph by Debby Jepps

A RECENT baby boom in Linton and the surrounding area has meant that our Bumps to Babies group held from 1.15 to 2.45pm on Thursday afternoons at Conker's Children's centre is positively thriving.

We have a large turn out each week where parents can meet others who have babies of similar ages and can offer friendship and support. We always round the session up with a lively sing-song that gets the most glorious smiles and laughter from the little ones.

Our last session for 2013 saw a lot of mini santas, snowmen and elves turning up who were all looking forward to their first Christmas.

If you have a baby aged up to 12 months old, please do come along. There is no need to book and a warm welcome awaits you.

If you have any questions you would like to ask the Children's centre, then please do not hesitate to call the office on 893594.

Debby Jepps

Linton Christmas market

THE cobbled area, next door but one to the Linton Kitchen is first thought to have been used in the 1500's and housed a Tudor Market Hall, but it has been many decades since a market has taken place there.

At dawn on a clear December Saturday, the square came into its own when local food producers, shopkeepers and craftspeople set up their stalls ready to trade. The sun shone and within an hour the often unnoticed cobbled square was heaving.

Stallholders included Jigsaw Bakery and Ashcroft & Sons Butchers, Black Bar Brewery, Cambridge Chilli Sauce Company and PennyBee. The Linton Kitchen served cups of warming mulled wine, homemade soup, hot chocolates and coffees and it was largely a sellout day for all.

The market gave local residents the opportunity to buy some last minute gifts and have a festive catch up with friends. The Linton Infant school children and parent choirs sang carols, and Karen from Linton Jazz also provided live music.

All in all it was a huge success. Thank you so much to all who attended and helped me to organise the market at such short notice, and to the parish council for granting permission. I aim to plan more markets, maybe one as soon as Easter time so watch this space.



The busy market in full swing
Photograph supplied by Gemma Whiting

Gemma Whiting, 894949

Readers write...

Post and email addresses and deadline for articles are on this page. All letters for publication must have a full name, address or phone number to enable us to check authenticity. Letters may be edited. Opinions are not necessarily those of the Linton News.

Anonymous letters will NOT be published but names and addresses may be withheld if requested.

Fight development of the village green in Linton

Dear Editor
Readers of the Linton News responded positively to my item on the village green. Henry Bennett has offered to co-ordinate opposition to the proposed development. If you wish to keep up to date with developments please send him your email address to protectgreenlane@gmail.com
Garth Collard

Three new classes to mark three years of Body Design Pilates

LOCAL resident Su Matthews started Body Design Pilates three years ago with one class on a Friday morning at Linton village hall. So successful has this venture been that Su is now running a total of eight day/evening classes and to celebrate her anniversary, Su is proud to be starting three new classes on Thursday mornings from 27th February to supplement her existing Friday morning classes.

Set at various levels, the new classes include a *Healthy Back* class, based on the world-renowned Body Control Pilates programme.

Each new class member has a free one-to-one start up session with Su, at her private studio room, prior to joining a group. After suffering miserably with chronic back pain following her pregnancies, Su trained through Body Control Pilates, London. It is a testament to the benefits Pilates can bring that Su then went on to qualify as an Advanced Level 4 Pilates Teacher & Back 4 Good Practitioner, specialising in Pilates for lower back pain sufferers.

For more information call me on 07986 692334 or visit www.bodydesignpilates.co.uk

Su Matthews

Su Matthews



Back 4 Good Practitioner
Level 4 Advanced Pilates Teacher
Back Care Professional

W: www.bodydesignpilates.co.uk
E: bodydesignpilates@hotmail.com
M: 07986 692334






Maudy's Guests
Pet Sitting
House Sitting
Doggy Daycare
Dog Walking
07883185426
www.maudyguests.co.uk

For All Alterations to LADIES' or GENTLEMEN'S CLOTHING
Ring **HEMLINE**
Tel: 01223 891034

Linton Cabs TAXI



Pre-book only Linton based taxi service
Airports - Train Stations - Local Travel

Tel: 07958 657300 / 01223 890965
Email: lintoncabs@btinternet.com

Rampaging Vikings go berserk

theWI OUR talk this month, by Robert Burrige, was on the Vikings. They had a reputation for extreme violence and a regular prayer at the time by the monks was, 'From the fury of the northmen, oh lord, preserve us'.

The Vikings came from Norway, Sweden and Denmark. The word vik means inlet. They developed boat-building techniques, their longships having overlapping planks making them watertight. Both ends of the boat could be used by turning the oars and sail, and could be moved overland by using logs. These boats could travel long distances, and navigating by the stars even reached as far as Newfoundland and Constantinople.

The reasons for leaving their own countries and rampaging were the poor soil, land inheritance squabbles, the dispossessed having to leave, and their duty to fight for their lord, or jarl. They made high quality swords which were only for the rich. Others carried axes. They believed the greatest honour was to die in battle, so they could go to Valhalla to live with the Norse gods. The viking word berserk means working themselves up into a fury to attack.

In England there was no unified army to drive them away until the time of King Alfred, when the country was divided between him and the Vikings (danelaw). They were bribed with silver (danegeld) to make them behave themselves.

They eventually began to settle and farm and trade. Place names ending in *by* or *thorpe* were Viking settlements. Our own parliament was founded by a Viking (Simon de Montfort) and trial by jury was a Viking idea. By the time of the Norman conquest in 1066, the Viking era was over. William the Conqueror himself was descended from Vikings, Norman meaning northmen.

Our next meeting is on 4th February when the speaker will be Geoff Evans talking on the subject of Alaska.

Sally Proberts

For the love of money— a tale of the church, kings and knights

THE Linton and District Historical Society talk for February will be *The Abbey, The Cross, and the Knights*. It will feature a brief history of Denny Abbey including, from 1169, the Knights Templar.

Denny Abbey was, in effect, the Knight's retirement home after their days of battle were long over and they could no longer wield an axe, and all thoughts of plunder were all but distant memories. That obviously is a very flippant commentary on a very important and interesting period of our history.

The Knights Templar had grown increasingly powerful and most of the nobles and Royal houses of Europe were mortgaged up to their eye balls in debt to the Templars. There were two ways of dealing with that; one, pay up, or two eliminate not the debt itself, but those who held the debt. Therefore in 1308 King Edward II had all the members of the Order arrested and imprisoned for alleged heresy, confiscating their property.

If you would like to hear more, do come and listen to this fascinating talk with historian Chris Leuchars from Denny Abbey, at 7.30pm on Tuesday 18th February in Linton village hall. All are very welcome.

Andrew Westwood-Bate

IMPROVE YOUR SPANISH AT HOME
experienced teacher
lessons in your own home
free initial assessment/consultation
If you are interested in improving your Spanish contact:
Susan Hodges
(01223) 891521
or sjhmac2@yahoo.co.uk

BED & BREAKFAST
Mrs Monica Clarkson
4 Harefield Rise, Linton
Tel: 01223 892988
Quiet modern bungalow
Families welcome
No Smoking

Watkins Joinery



- FITTED KITCHENS / BEDROOMS / WARDROBES
- CABINET MAKERS
- BESPOKE JOINERY
- DOORS / WINDOWS / STAIRS
- WOODEN FLOORING
- CONSERVATORIES
- EXTENSIONS / REFURBISHMENTS

20 YEARS' EXPERIENCE
INSURANCE WORK
UNDERTAKEN

Tel.: 01223 890600 Mobile: 07802 885390
colin.watkins@keme.co.uk

MOPS HAIR SALON

HAIR BY JO DENNY
WOMEN | MEN | CHILDREN
CUTTING & COLOURING

41 LINTON HIGH STREET
(BEHIND BOSWELL'S BAKERY)
t: 01223 893 285

Carpentry, Plumbing, Tiling
Door/Window Replacement
Kitchen/Bathroom Refitting

Fencing & Decking
Painting/Decorating
Flat Pack assembly

Property Maintenance
Steve Jackson
stevejacksonltd@hotmail.co.uk

Aerial Upgrades & installations
Satellite dishes installed

Steve Jackson
Office 01223 893896
Mobile 07963 854653

B Haylock
Wood Flooring & Carpentry
Supply and installation
Free quotations
Home viewing of samples

Mob: 07734057520
bshaylock@btinternet.com

THE LINTON NEWS Next Publication 3rd March 2014
DEADLINES for ADVERTS Monday 10th February
NEWS ITEMS Wednesday 12th February

ITEMS FOR ADVERTISING MANAGER
Limited space on waiting list for Linton businesses
Changes to ads can be sent to: Judith Rouse
email: adds@linton.info

ITEMS FOR THE EDITOR
Can be put in the Linton News Box in the Post Office
Editor: Fran Armes email: ineditor@linton.info
Phone 891517

For distribution queries contact: Kate France 891602

LINTON DIARY

For entry in this list, ensure that your event is written into the diary in the Post Office, failure to do so could mean non-entry to the diary here.

You may also send an email with your event details to diary@linton.info, or use the form on www.linton.info.
Call 971797 for an audio version of the Linton News
Details of items in bold type may be found elsewhere in this edition.

WEEKLY

Conkers childrens' centre, 9.30am-12.30pm, Wed-Fri	CC
Whist drive, 7.30pm Mondays	VH
Chestnutbaby/toddlergroup, 9.30-11.30am Mondays term time	CC
Linton Granta football bingo, 7pm Mondays	Pavilion
Linton theatre workshop, Mondays (call Joe 01440 703701)	
WEA, Tuesdays, 10am term-time	VH
Scrabble club, 10am-12noon alternate Tuesdays	CP
Linton Granta toddlers, 9.30-11.30am Tuesdays	LVC
Storytime, 2-2.30pm	Library
Granta bridge club, 2pm Tuesdays	VH
Table tennis club, 8pm Thursdays term time only	URC
Linton chess club, 7.30pm Tuesdays (893509)	CC
Granta duplicate bridge club, 2-4pm Tuesdays	VH
IT club, 7pm Tuesdays	CC
Tots in tow, 10-11.30am Wednesdays term time only	VH
Linton radio race car club, 6-10pm Wednesdays	VH
Carpet bowls, 7.30pm Thursdays	VH
Bumps to babies, 1.15-2.45pm Thursdays	CC
Parents, carers and tots Mocha house, 9.15-10am Fridays	CP
St Mary's church choir, 7-8.30pm Fridays	St Mary's
Bridge club, 7pm Fridays	CC

For sports centre courses please call LVC sports centre on 890248

FEBRUARY 2014

1 Farmer's Market, 9am	LVC
3 Camera club, 7.15pm	CC
4 Scrabble club, 10-12noon	CP
4 Linton WI, 7.30pm	VH
5 Reading Group, 8pm	VH upstairs
6 Lunch club, 12.15pm	Red Lion
6 Police surgery, 12noon-2pm	Police office, Fire station
6 Parish council meeting, 8pm	CC
8 Linton Music Nemtsov Duo, 7.30pm	LVC
9 Lighthouse, 10.15am - 12noon	URC
11 VIP group, 2pm	Chalklands
11 Gardening club, 7.30pm	VH
12 Community Navigator drop in, 10am-12noon	HC
12 Watoto children's choir, 7pm	St Mary's
16 Walking group, 11am	Church lane
16 Messy Church, 2.30pm	St Mary's
18 Scrabble club, 10-12noon	CP
18 Historical Society, 7.30pm	VH
19 Cambridge Hearing Help, 9.30-12noon,	HC
19 Twilight at the museums, Various Cambridge Museums	
20 Parish council meeting, 8pm	CC
23 Cambridge Glass fair, 10.30am	LVC
25 ACE trip to Norwich, contact Enid on 891069	D&D
28 Quiz and chips, 7pm	LI

MARCH 2014

1 Farmers' Market, 9am	LVC
3 Camera club, 7.15pm	CC
4 Scrabble club, 10-12noon	CP
4 Linton WI, 7.30pm	VH
5 Reading Group, 8pm	VH upstairs
6 Lunch club, 12.15pm	Red Lion
6 Parish council meeting, 8pm	CC

For Cathodeon Centre bookings contact Sue Mudge, 07765 369266
KEY: CC Cathodeon centre, CP church pavilion, D&D Dog and Duck, HC health centre, LH Linton Heights school, LI Linton Infant school, LVC Linton village college, RG recreation ground, URC United Reform church, VH village hall.
Library times: Mon closed; Tue 10am-5pm; Wed 4pm-7pm; Thurs 2pm-5pm; Fri 10am-5pm; Sat 10am-1pm.
Linton refuse collection: 10th and 24th February
Linton recycling collection: 3rd and 17th February

off to Kumon I go, at maths and English I'm a pro, all my answers are right and my future is so bright!

Maths and English Study Programmes

Kumon can help your child progress with their maths and English studies, boost their confidence and help them shine.

Every day Kumon helps children of all ages and abilities to realise their true potential. With over 600 centres nationwide, it's convenient too.

Contact your local Instructor today.

Mrs Karen Tumber
Linton Study Centre
01223 893578

KUMON
Every child can shine

kumon.co.uk

In your own time



Jack is not acting, he's the real thing

Photograph by Sarah Hurcum

YOU may remember reading about Jack Glossop in the Linton News some months ago and will, no doubt, be interested to have an update.

Jack trained at the International Butler Academy in Valkenburg in the Netherlands in 2012, a course lasting two months. His first posting was to Chengdu in China where he managed a luxury apartment building and was in charge of guest services on behalf of a real estate company and where he remained for six months.

He came back to Linton briefly before taking up his present post in Saudi Arabia, where he is Palace Manager for a high net worth individual. Jack is responsible for the day-to-day running of the palace and organises a core staff of 15 plus in-house gardeners, electricians and plumbers, a total of about 25 people.

His position means that he is actually on call 24/7 but on average works a 10 hour day split into morning and evening shifts, the middle of the day being too hot to work.

He plans to stay in Saudi Arabia for the foreseeable future although he would like to see more of the world and will probably eventually come back to work in Europe or the UK.

Jack is still only 25 years of age and his progress has been remarkable. We should be proud to have our own Mr. Carson in the Middle East. Downton Abbey – you don't know what you are missing.

Sarah Hurcum

Twilight at the museums

ON Wednesday 19th February, from 4.30pm to 8.30pm as darkness falls, museums and collections across Cambridge will open their doors into the night for an exciting evening of free drop-in and bookable family events.

Taking place in 12 venues across the city, you can set out and discover the extraordinary world of Cambridge museums and collections after dark. Whether it's experiencing the sights and sounds of ice at The Polar Museum, journeying by torchlight through the Botanic Garden Glasshouses or creating amazing photographs in the evocative setting of the Museum of Technology, there will be plenty to explore. Get ready for the adventure by visiting www.cam.ac.uk/museums/twilight

Susan Millar, Event Administration Assistant for the University of Cambridge Museums

ACEs are off to Norwich

THE next ACEs' event will be a trip to Norwich - that fine city, with its history, arts, good food and shopping opportunities on Tuesday 25th February.

As usual we will be picking up at 9.30am at the Dog and Duck, stopping at the Cemetery on the Back Road and at the Fire Station. We will be setting off from Norwich at around 3.30pm.

There will be a drop-off at the City Centre for the Market, the Castle and Museum, the Cathedral and shopping centres. There will also be a drop off at UEA for the Sainsbury Centre where there is an exhibition – Sense and Sensuality: Art Nouveau 1890-1914, which might stir us up on a cold day.

The cost will be as low as possible at around £12-£14. This depends on the numbers.

The trip is primarily for the older residents, but as we would like a full coach, we are happy to hear from others who would like to come. Please call me to book your place. Enid Bald 891069

The Sawston fun run and walk in May

THE new Arthur Rank Hospice, scheduled to be built at Shelford Bottom, will be the major beneficiary of the 2014 Sawston Fun Run and Walk planned for Sunday 11th May. Other beneficiaries include Cambridgeshire Mencap, the Granta Special Needs School at Linton, Centre33 in Cambridge and other local organisations in Sawston and local villages that help young people.

The organiser, the Rotary Club of Sawston District, aims to raise at least £16,000 and add a significant sum to the £382,150 that the event has donated exclusively to local charities and organisations over the years.

Ian Chamberlain, chairman of the organising committee, said, "We recognise the amount of benevolence that exists in the local community and hope for much support for this splendid charity that has touched the lives of so many people in Cambridgeshire over the years. We're pleased that The Cambridge Building Society has agreed to continue to be the event's sponsor and that Sawston Village college will provide so many essential facilities."

The event has become the largest annual family event in the area and regularly attracts over 1,100 entrants from a wide area; elite club runners, keep-fit joggers and those who do it for

the fun. To widen the appeal even more, the Rotary Club plans to have a short route for families and small children and appeals to everyone to support the event by registering early.

Past sponsors and advertisers are being asked to continue their support, and offers of help would be much appreciated. Advertising and promotional opportunities exist for those businesses who want to be supportive and involved. Details can be obtained from Tony Collett on 893447 or by emailing tony.collett@virgin.net

Online registrations will be accepted from mid-February at www.sawstonfunrun.co.uk and registration forms will be available from branches of The Cambridge Building Society and Sawston Village college.

Tony Collett 893447
tony.collett@virgin.net

LEARNING DIFFICULTIES STUDY SKILLS TUTOR

I offer tutoring in practical learning skills and strategies for Primary and Secondary school students and adults

I am an experienced and successful teacher at Secondary / 6th form, with a background in Psychology, Research and teaching at Cambridge University

Contact Sheila Bennett
Tel: 01223 890171

Care Network Cambridgeshire

This local charity called holds a regular session at Linton Health Centre where people can call in and have a chat with our local Community Navigator volunteer who is there to help older people find out about support and services they might be able to access, at a time when they need help.

We are there on the second Wednesday of every month from 10am-12 noon. The next session is on 12th February.

Rob Wallace Community Navigators Coordinator South Cambs., 01954 212100, 07436 808627, rob.w@care-network.org.uk



Free advice about support for adults and their carers

A SERIES of drop-in events has been organised to provide free and confidential information and advice to adults living with a long-term illness or disability, older people struggling with an age-related condition and anyone providing unpaid support to adult family members or friends who could not manage without this help.

The drop-in sessions are being held on the last Wednesday of the month during 2014 at the Horizon Centre, 285 Coldhams Lane, Cambridge CB1 3HY (near the roundabout opposite Sainsburys). Come along any time between 1.30pm and 3.30pm for a cup of tea and to find out about the support available to you.

The session on 26th March will provide specialist information from the Village Benefits Advice team.

For more information phone 01480 377616 / 01480 373220, email

Drop-insessions_asc@cambridgeshire.gov.uk or visit www.cambridgeshire.net and search Adult Support Drop-in.

Amanda Davies, 699650, Communications Officer, ASC Personalisation, Cambridgeshire County Council

Have a say about your neighbourhood and get things done

ShapeYourPlace.org is an award winning website giving local residents across Cambridgeshire a real say about what matters most to them in their local area. It acts as a one stop shop for the community where you can have conversations with each other and local public services about local issues and news.

On the site you can:

- Raise issues affecting where you live
- Start campaigns and debates and have conversations with other people
- Blog about local events and community activities
- Share community news and issues.

Where an issue is raised by a resident, the police, fire service and local councils have agreed to respond in 10 days about how they can resolve the issue if possible.

With ShapeYourPlace you don't have to worry who is responsible for the issue, as the team behind the website will direct your issue or idea to the right organisation.

Have you got a story to tell? We offer free training to help you report on what happens in your local area using words, audio, images and videos.

In the next few months I will be out and about meeting with local residents and community groups so if you see me in your area, please come and say hello. I'd like to find out more about the positive things that happen in your community and learn about the local issues that may concern you - please get in touch if you'd like to meet for a chat and find out more about ShapeYourPlace.

Anna Allen,

<http://southcambridgeshire.shapeyourplace.org>,
07769304132, anna.allen@cambridgeshire.gov.uk

GEOFF NORBY
PLUMBING & HEATING ENGINEER - Estd. 1966
All aspects of Central Heating and Plumbing
Boiler Service & Maintenance
Bathroom Suites & Power Showers
Kitchen Installations - Tap Washers
Telephone 01223 892311
Mobile 07885 068047
geoffnorby@tiscali.co.uk

AJB FENCING
www.ajbfencing.co.uk
Fencing - Decking - Gates
All Groundworks
Free Quotations
Quality Service
01223 894795
07813 070542
andy@ajbfencing.co.uk

DACRE LONG
Local Painter and Decorator
66 Chalklands, Linton
Professional work to highest standard for over 15 years
Trade and Private Customers
Free quotes with written specification
Phone 01223 893176 or 07837513837
Discounts for Senior Citizens

CLAIRE CREEK
PERSONAL TRAINING
Want to get in good physical shape?
Lose any excess weight?
Or just maintain a healthy lifestyle?
GET A PERSONAL TRAINER!
REPs Level 3
GP Referral Qualified
BSc Sport & Exercise Science Degree
TEL: 07912521252
EMAIL: clairecreekpt@gmail.com

NRS CARPETS
HOME SELECTION
FREE MEASURING & ESTIMATING
All types of flooring available
Tel: 01223 893634
Mobile: 07885 173113

THREE COUNTIES CONVEYANCING
Property Lawyers and Commissioner for Oaths
Local Lawyer
40 years experience
NO VAT
01223 894300
www.threecountiesconveyancing.co.uk

N. CLAXTON
Painting & Decorating and Property Maintenance
FREE ESTIMATES
Tel: 01223 893487
Mobile: 07724073045
e-mail: n.claxton925@btinternet.com

LINTON PAVING COMPANY
YOUR LOCAL LANDSCAPING BLOCK PAVING & PATIO SPECIALIST.
PROPERTY MAINTENANCE
Int/Ext Painting, General Repairs
FRIENDLY SERVICE.
FREE QUOTATIONS
Tel: Andre Jacobs
01223 890060
07765 594398

Local Ironing Service
Fast, friendly ironing service tailored to suit your needs.
Working overtime? Not enough hours in the day? Can't face that stack of ironing?
Economical hourly rate. Free collection/delivery available.
Call Carolyn on 01223 891762 or 07961 919374
carolynturner63@yahoo.co.uk

Students 20% off THE ROOM Special Kids Prices
37 Bartlow Road, Linton
Tel: Pippa (01223) 890890
OPENING TIMES
Mon Closed
Tues 9-5 pm
Wed 9-7 pm
Thurs 9-7 pm
Fri 9-5 pm
Sat 9-3 pm
Senior Citizens
Tuesday & Wednesday
Late opening until 7 pm on Wednesday & Thursday

PLODDING ALONG An update on police matters

Have you seen this sundial?

WE ARE appealing for any information regarding a unique bronze sundial that was taken from the back garden of a property in The Grip. The sundial was believed to have been taken between 11.30pm on 31st December and 10.45am on 1st January. Offenders would have needed to have been in a vehicle and the dial would need two people to lift it. The dial was taken from a property situated in a cul-de-sac area of



The sundial

Picture supplied by Leanne Fisher

The Grip, is of great sentimental value to the owners as it was made by a member of their family who has since passed away. If anyone has any information regarding this crime please contact me at Sawston Police station or call 101.

The next police surgery is on Thursday the 6th February 2014 from 12noon to 2pm at Linton police office, situated at the fire station in Linton. The next panel meeting is on Thursday 13th February from 7pm in the main hall at Sawston Village college New Road Sawston.

PCO 7239 Leanne Fisher, Neighbourhood Policing Team

Watch out for the latest scam

THERE is a new kind of scam going on whereby a man knocks on the door to say there will be roadworks close to the property and apologises for any noise.

He then asks to use the toilet and tries to gain access to look around. In this case the lady read our sticker, called the police who arrived very quickly and searched the village for the commen.

The commen wear yellow high visibility vests/jackets, and are pleasant to speak to, making them believable.

Please **Do Not** let these people in but redirect them to a public toilet or politely refuse entry.

Update on Operation Oaklands

OPERATION Oaklands is where a number of officers concentrate on one village for a period of 24 hours looking at security and giving out crime prevention advice in the area. We have received lots of good responses from local residents in the villages we have been to so far, and the local radio has released an article to that effect whereby police notes have been found in homes and vehicles to highlight to the owners the need to improve their security (as an alarming number were found open at night)

Please make sure you don't become a victim of burglary /theft and if you want further information on how to stay safe, please look at the following website;-www.GetclosertoChristmas.org

PCSO John Coppard

Sawston / Fulbourn / Linton Neighbourhood Team.

PLUMBLINE

PLUMBING AND HEATING ENGINEER
PROFESSIONAL DOMESTIC PLUMBING SERVICE

Including Property Maintenance
Painting: Tiling: Plastering: Carpentry

Call John on
01223 893903

Supcik@talktalk.net
Fully Qualified and Insured

Friendly and Reliable Service No Job Too Small



Linton Country Diary

Please note that there is no country diary this month due to an editorial difficulty.

Editor

Lighthouse club

This is a free club for children aged 5 to 11 years held on the second Sunday of every month from 10.15 to 12pm at the Free Church hall (URC). The next club is on February 9th.

Penny Bridge
01223 890784

The white garden and beyond



WHEN Andrew Sankey tours America speaking about English gardens he finds that Americans believe that the entire garden at Sissinghurst is planted with white. Whilst the white garden is justifiably renowned, it is but a small part of the garden that was planted in about 1950 to replace a failed rose garden. What a relief to learn that even Vita Sackville West had gardening failures!

The rest of the garden had been worked on by both Vita Sackville West and her husband Harold for 20 years by the time the white garden came into being. Their partnership combined his strict formal design with her skill in informal planting to create the wonderful garden so many visit to this day.

It is hard to comprehend that when they bought the property it was uninhabitable and so covered in rubbish and weeds that it took them two years just to clear it up. Andrew Sankey breathed the enthusiasm and reality of life into his subject as he talked and made us all appreciate how much effort it took to create the Sissinghurst loved today.

On 11th February Rodney Tibbs will highlight how much has changed in our gardens and no doubt also remind us of that which hasn't, when he speaks about *Gardening then and now*.

The meeting starts at 7.30pm in the village hall and all are warmly invited to join us.

Kirsten Newble, lgcsecretary@yahoo.co.uk

Cambridgeshire Fire and Rescue Service – Don't set your loved one's heart on fire

FIREFIGHTERS are asking residents to take care while cooking during February.

Valentine's Day means more people turn to the kitchen to cook their way to a loved one's heart, and combined with Shrove Tuesday and National Chip Week, which runs from 17th – 23rd February, there are many more opportunities for people to

be distracted whilst cooking this month.

Here are some handy tips for staying safe in the kitchen:

- Never leave cooking unattended and avoid leaving children alone in the kitchen when cooking on a hob
- Keep tea towels and cloths away from the cooker and hob
- Avoid drinking alcohol to excess when cooking
- Take care when cooking with oil, especially in deep fat fryers – it sets alight easily.
- Don't tackle a fire yourself – Get out, stay out and dial 999.

To find out if you are eligible for a free home fire safety check, call 0800 917 99 94.

Leanne Ehren, CFRS,
01480 444558,
www.cambsfire.gov.uk

D. J. ALBON T. J. JOBSON

BUILDERS & DECORATORS
Est. 1975

Specialising in all aspects of building, decorating, maintenance and repair work, modern and traditional. All at competitive prices.

- All Brickwork • Garden Walls
- Chimneys rebuilt, re-pointed and repaired
- Extensions • Block Paving • Plastering
- Painting and Decorating • Floor and Wall Tiling • Fencing • UPVC Windows, Doors, Conservatories, Facias, Soffits, Guttering.

Supplied and fitted
All maintenance - No job too small
Free estimates given
Office: 01440 786581
Mobile: 07948 004680

the flower boutique

Treat yourself, your friends and family to the freshest seasonal flowers. Bespoke design service for weddings and funerals.

41 high street . Linton . 01223 891740

www.theflowerboutique.co.uk

PJB Maintenance

No job too small
Ground work, Patios, Floor & Wall Tiling, Fencing, Roof repairs, Demolition
CPSC Licence
Free Estimates

Call Peter Belsom on
Mob: 07799 183308
Tel: 01223 891273

STEVE WEBB Painter & Decorator

Over 30 years experience
CITY & GUILDS CERTIFICATES

Montford Barn
Horseheath
Tel: 01223 893864
Mobile: 07772991373

L.B. CABS LINTON

For all your travel needs

Tel: 01223 892986

Mob: 0771 2420675

A & R PLASTERING

All aspects of plastering undertaken:
Plasterboarding
Rendering
No job too small
19 years experience
Free estimates

Mobile: 0774 8627920



easy-drive school of motoring
Tony Holmes
Grade 6 Instructor

£22 per hour
01223-893346
easy-drive-som.com

CHIMNEY SWEEP

J. L. WIGHT

Guild of Master Sweeps.
Qualified advice Problems solved.
Certificates issued.

www.camsweep.co.uk

01954 253315
26, Cow Lane, Rampton

POT POURRI 107

The radius of the sphere is?

IF the volume and surface area of a sphere are four-digit whole numbers times pi, what is the sphere's radius?
NB: The numbers are not the same.

Solution to 106 – How many parts?

THE number of parts in a hexagon, heptagon and octagon when their diagonals are drawn are 24, 50 and 80 respectively.
Urania

NEWS IN BRIEF

Cambridge Glass Fair

THIS is a leading specialist fair selling fine quality antique and collectable glass. Held on Sunday 23rd February at LVC from 10.30am until 4.00pm, admission is £5 with accompanied children under 16 free of charge. Contact me on www.cambridgeglassfair.com 07887 762872

Paul Bishop

Hildersham News in Brief

IT'S Teatime will take place from 3pm to 4.30pm. on Thursday 6th February at Hildersham village hall

The Hildersham Lecture will take place at 7.30pm on Tuesday 25th February at Holy Trinity Church Hildersham when Christopher Andrew, Professor of Modern and Contemporary History at Cambridge University, will give a talk entitled *Cambridge Spies*. Tickets are £5, or £10 for a family ticket including refreshments.

For more details contact Cathy Myer on 892848 or catherinemyer43@btinternet.com

Cathy Myer

.... and

THE Hildersham Village Hall Trust is holding a quiz on Friday 14th March. Everyone is welcome – individuals, or teams of up to eight and the ticket price will include a hot supper.

Bring your own drinks and we'll provide the glasses. Full details next month or contact Jill Heale on 893596.

Jill Heale



District and County Council Matters

Roger Hickford, District and County Councillor for Linton, www.RogerHickford.com, Roger@RogerHickford.com, Tel: 890770

Update on the A1307

THE City Deal, a partnership between the District, County and Cambridge City, is looking more likely and will provide funds to boost the local economy through infrastructure improvements. It will hopefully be rubber stamped in the next few months.

Due to the representations from the last Steering Group meeting, the A1307 has been included and specifically mentioned as a beneficiary of the deal. (This was not the case 18 months ago.)

The Deal will provide funding along the Haverhill to Cambridge transport corridor. The majority of the money must be used to improve and upgrade public transport, but some funding will be available for junction improvements and upgrades along the A1307.

In meetings with officers I have agreement that a holistic approach for the corridor is necessary and to that end, for the first time, there will be traffic counters, not only on the A1307, but also on the major rat-running routes through our neighbouring villages at the same time. We will then have an accurate figure of just how many commuters there are along the corridor.

One of the Steering Group's aims was to investigate the possibility of a new road and I will continue pushing for this. There are further meetings already planned in February and March.

Benten & Co.

Chartered Certified Accountants

We are a friendly, well established firm, large enough to deal with most accountancy and taxation matters.

Please telephone for an initial consultation (without obligation)

Abbey House, 51 High Street, Saffron Walden
Telephone 01799 523053
www.benten.co.uk

The Crown Inn, Linton

Free house, restaurant & accommodation

Visit CAMRA's Cambridge and District Rural Pub of the Year 2013
Valentine's Day Special 14th February.
Phone for details.

Legendary Pudding Club is back on the 26th of February only £12.50 for main meal with a free run at the homemade desserts.

Check out our website for details

www.crownatinton.co.uk

11, High Street, Linton, Cambs Tel 01223 891759



The Derbyshire Post



WE have started 2014 in consultative mode at LVC. Three years ago the college became an academy, moving away from local authority control and funding, to a more independent status, funded directly by the Department for Education and holding a funding agreement with them also. In these three years we have continued to work closely with the LA, possibly even more closely than we did when we were a maintained school. We have also maintained strong links with local schools through other partnerships with which we have been involved, such as our Teaching Schools Alliance, CASSA, our locality partnership with the Sawston and Linton cluster schools, our membership of the Cambridge Area Partnership, which gives us close links to the sixth forms our students choose to go to and the South Cambridgeshire Inclusion Partnership which enables us to keep children who are exhibiting challenging behaviour in a mainstream local setting.

As an academy, these partnerships are important to us. They mean that we do not operate in isolation and that we are supported in the decisions that we make. We have not looked back since we became an academy: our results have improved further, we achieved a second Outstanding grade at our last Ofsted inspection and although, like all Cambridgeshire schools, we remain under funded, the situation would have been intolerable if we had not had the advantage of the improvement in revenue that came from receiving our money directly.

LVC now has the confidence and the capacity to set up a Multi Academy Trust: a family of schools governed by a legal trust, which oversees the standards and resource management of all of the schools who may join it. Our Multi Academy Trust will be called Chilford Hundred Educational Trust, a name that reflects a geographical area from the Domesday Book and a purpose. The first school to join us looks likely to be the Meadow Primary school in Balsham, because we are involved in sponsoring them at the request of the Local Authority and with the approval of the DfE. We have taken quite a cautious approach to setting up a MAT, sitting back and watching a number of other schools in

the county like Comberton, Swavesey and Soham village colleges do so before us. But the timing is now right for us and we are consulting on the change with parents, staff and other interested parties over the coming weeks.

Caroline Derbyshire

What Ever Cakes
Offering beautiful bespoke:
• Cakes
• Cake Pops
• Biscuits
• Cupcakes & more...
Baked with lots of love by Keren from her home in Linton
www.whatevercakes.co.uk
Tel. 07580 677006

MOBILE CHIROPRACTIC SERVICE
GCC-Registered Chiropractor
ALEXANDER M SMITH
01223 967565
SOUTH CAMBS AREA
(Based in Linton)
Effective care in the comfort of your home
- Low back pain & sciatica
- Neck pain & headaches
- Muscle spasm/tension
- Shoulder & Knee pain
- Postural problems
www.alexandersmithchiropractor.co.uk

Singing Lessons
Sarah Rosewell
BA (Hons) Music
Individual singing lessons available for all ages and abilities
Whether towards exams or purely for pleasure
* CRB Checked
* Based in Linton
For more information contact:
Sarah on 01223 894861
Email: sarahrosewell@hotmail.com

A TOUCH OF NAILS
GELISH MANICURES & PEDICURES
PERFORMS LIKE A GEL APPLIES
LIKE A POLISH
Call Michelle on 07866 017 801
supcuk@talktalk.net
HORSEHEATH

Barn Owl Accommodation

Three private self-contained annexes all in Linton
www.barnowlaccommodation.co.uk
Call Michelle on 07584 430051

Rural Magpie
A store of rescued treasures and hand-painted furniture pieces...

www.ruralmagpie.co.uk
Contact Keren on 01223 894292 or karen@ruralmagpie.co.uk

LVC news

Students using the new computers
Picture supplied by Tony Kelly

THE PE Department is benefiting from a generous donation from local employer Marshall Aerospace, which has given a large number computers to the school. "We are grateful to Marshall Aerospace for their very generous support. This has allowed us to equip a refurbished mobile classroom as a fully functioning IT suite, giving students access to the internet and computer technology in their GCSE PE and BTEC Sport lessons." said LVC deputy principal, Tim Darby.

Around 40 students from LVC took part in the district schools cross-country championships at Netherhall. The Year 7 and Year 8/9 boys' teams both won their categories, and there were individual wins for Lauren and Charlotte Murphy in the Year 8/9 and Year 10/11 girls' races. Twelve athletes qualified for the county championships at Ely on 18th January. Well done to all who took part and good luck at Ely.

The Christmas Charities Fayre on the last day of term raised over £2,000 for our partner school in South Africa and charities chosen by the students. Well done everyone and Happy New Year.
Tony Kelly, LVC

The Way We Were

By Garth Collard



1914 workhouse and Belgian wounded
Picture from Garth's collection

THE plight of Syrian refugees has led to calls for the UK to provide homes and refuges for wounded combatants and homeless civilians.

In 1914 the mighty German army invaded Belgium, which led to Britain declaring war on Germany. The German invaders were depicted in the press as barbaric Huns who were resisted by Little Belgium.

In Britain refugee committees were established in most towns and villages and the leading advocate in London was Sir Walter Wilkin, a former lord mayor of the city. He was then a Linton resident since he had purchased the main Linton estates in 1904.

Wounded Belgian soldiers were treated at the Great Eastern hospital, housed in tents and wooden huts on the site of the present university library. Nine troop trains per month brought the wounded to Cambridge and some of them were transferred to 16 different VAD Red Cross hospitals in the county.

In August 1914 forty Belgian wounded were housed in the north-west wing of the workhouse in two wards. The stables, on the right hand side of the entrance, were converted into washing facilities.

Some workhouse inmates were transferred to other establishments.
Two families were housed

in Linton, in Horn Lane, in a house now called Amhurst but known then as The Limes. Clothing and furnishings were provided by villagers. Funds to help the civilian refugees were raised in door to door collections by the Boy Scouts who also cultivated the garden to gain a proficiency badge. A Linton refugee committee oversaw the welfare of the families and the children attended Linton school, which at that time was in the present day Infant school.

The school children donated their annual prize-winning fund to the refugees.

Villagers responded positively to the Belgian cause. The hospital was staffed by local Red Cross volunteers. The Manor House hospital was under the control of Mrs Edith Smith, the wife of Frank Smith, the Chilford Hall farmer and the medical officer was Dr Palmer.

In June 1915 the Workhouse hospital was closed and the wounded were cared for in Sir Walter's manor house on the corner of Coles Lane. Wooden huts and tents were erected in the large, shaded garden which stretched all the way to Back Road.

PLANNING APPLICATIONS

- S/2521/13/FL Ms Julia Bradford, 43 The Woodlands, Single storey extension and alterations.
- S/2530/13/FL Mr & Mrs Simon Godsill, 131 High Street, Single storey rear extension.
- S/2532/13/LB Mr & Mrs Simon Godsill, 131 High Street, Single storey rear extension and internal alterations.
- S/2612/13/FL Mr & Mrs David Tideswell, Bull House, 40-44 High Street, Erection of orangery to rear of dwelling and alterations including reroofing of existing single storey rear element. Installation of dormer windows in front roof slope. Erection of metal railings and front boundary wall and replacement of brick posts and metal gate with timber posts and gate. Replacement of timber fencing with brick wall. Alterations and extension of existing outbuilding to the rear to create garage/cartlodge with room over and install solar panels on roof.
- S/2613/13/LB Mr & Mrs David Tideswell, Bull House, 40-44 High Street, Internal alterations including reinstatement of original openings, repositioning modern beams and removing studwork in kitchen and sitting room, replacing modern stairs with cloakroom under, creating stairs to loft, removing modern studwork to bathroom, WC

PLANNING APPLICATIONS

- and linen cupboard, reinstate dormer windows in loft, and recreate two rooms and cloakroom. Rebuild shower room and orangery at ground floor rear. Reinstall sash windows on rear and side. Reinstall metal railings and rebuild front boundary wall, and replace brick posts and metal gate with timber posts and gate. Replace timber fencing with brick wall. Alter and extend outbuilding to create garage/cartlodge with room over and install solar panels. Remove two outbuildings/garages to the rear and the tarmac drive. Reinstall soft landscaping. Strip off paint from brickwork.
- S/2615/13/AD Mr & Mrs R Ashcroft, 37-39 High Street, Consent to display hanging sign.
- S/2626/13/FL Mrs Julie Barnes, River Cottage, 18 Horn Lane, Retention of cold room within garage and external chiller unit
- S/2627/13/LB Mrs Julie Barnes, River Cottage, 18 Horn Lane, Retention of cold room within garage and external chiller unit and external alterations.
- S/2762/13/FL Savills, Unex House, 132-134, Hills Road, Cambridge, Newdigate House, 3 Horseheath Road, Erection of 12 Dwellings following demolition of dwelling.

KELVIN SCHOOL OF MOTORING

DOE ADI and MIAM Pass Plus
Instructing for 35 years!
For bookings 01223 892263
www.kelvinschoolofmotoring.co.uk
16 Back Road LINTON

LONG & SHORT STAY ACCOMMODATION
COTTAGE & CONVERTED BARN
HOLIDAYS, WEEKENDS BED & BREAKFAST
WEST WRATTING CAMBRIDGE, CB21 5LU
T: 01223 290492
www.bakerycottage.co.uk

Made to Measure
CAPRI BLINDS
* Verticals * Roman * Roller * Pleated * Venetian * Wooden
CALL NOW FOR
free quotation - free measuring - free fitting
Blackout blinds in a range of colours always available
Tel: 01223 894020
www.capriblinds.co.uk

G&W electrical contractors Ltd
Domestic & Commercial Inspection & Testing
All aspects of electrical work covered
gandwelectricaltd@gmail.com
07795 595856
07775 853866
01440 420603

GLENWOOD BOLTS & SCREWS LTD
www.glenwoodbolts.co.uk

SUPPLIERS OF QUALITY FASTENERS, FIXINGS & SILVERLINE TOOLS
Unit 2 Lintech Court
The Grip Industrial Estate, Linton
Cambridge, CB21 4XN
Tel: 01223 892095 / 893931
Fax: 01223 894122

ProClean
Your Complete Cleaning Solution
*Carpet Cleaning *Rugs *Stain Removal
*Car Valeting *Caravans *Motor Homes
*Upholstery Cleaning *Stain Protection
*Floor Cleaning / Scrubbing / Sealing / Polishing
*Pressure Washing of Patios Paths & Driveways
*Domestic Cleaning * Top Ups & One Off Cleaning
*Gutter / Fascia Cleaning
*Contract Office Cleaning (Flexible Options)
TEL: 890433 Mob: 0777 375 8355
74 Bartlow Rd, Linton, Cambridge, CB21 4LY

LITTLE HANDS NURSERY SCHOOL

Little Hands Nursery School
Linton & Bartlow
Offers preschool care and education for children - 2 years to school age
High staff to child ratio
Excellent Ofsted report
Sessions can be booked flexibly throughout our nursery day 9am-4pm in term time
For children old enough for funding (term after their 3rd birthday) 15 hours of sessions can be taken each week with no charge
Optional holiday clubs are available for children aged 2-8 years
Early starts and late finishes are available
For further information please contact
Mandy Norris - Nursery Manager : 01223 897945 e-mail lh-bartlow@btconnect.com
Little Hands is also at Bourn, Melbourn and Newton, visit the website at www.littlehands.co.uk



Parish Council Matters

Up the High Street!

Parish Council Matters is written, edited and published by the Parish Council with the support of the Linton News Team.

WHAT a change to the High Street! New shops and business give the area a buzz of activity. There was a heady scent of new paint all summer, so the place looks fresh and picturesque. The Market Square had been the site of weekly markets since around 1528. The Christmas Market on the square was a highlight of the season - we hope there will be many more.

So, what can the parish council do to help business? One problem is car parking and access. We have the Market Square, which is mainly a public car park intended for shoppers, and Coles Lane car park, but other short-term parking is limited, making it harder to attract passing trade. We are a mediaeval village, trying to deal with 21st Century problems. In the recent parish council bid to the minor highways improvement initiative (MHII), along with my ongoing safety and disability access scheme (which has resulted in several dropped kerbs throughout the village), we have included improving the road surface at the end of Meadow Lane, as this is problematic for those with mobility problems. A previous bid to the MHII scheme (with input from Cllr Hickford) will result in changes to parking outside the Co-op, changed traffic priorities near the junction with Balsham Road, and footpath improvement opposite Church Lane. We also have improvements to the bus stops. As we are now paying for some road marking, the parish council has contacted county council highways for a cost estimate for improved white-lining in some areas, and markings for park-

ing bays near the Dog and Duck public house. This should help organise the space to increase the number of cars that can park in that area. We hope it will also prevent blocking of Meadow Lane by badly positioned vehicles, which can also affect wheelchair access to the pub. What are your thoughts on this and what else can be done to create more parking space? Ideas are welcome.

It was mooted at a recent parish council meeting that we might establish a business club, so that SMEs and the self-employed could meet to share skills and experiences. Perhaps we could also have a register of equipment and skills for when we get stuck and need help on a problem, or need an item for just a short time. I know that the pleasure of having a tax-deductible item can be marred by it sitting unused for much of the time!

It is the policy of the parish council to object to change of use from commercial to a residential role, but our view is also tempered by pragmatism. In light of what is occurring with the Pear Tree public house in Hildersham (thanks to Cllr Hickford for alerting us), we will be considering whether to seek to have suitable premises placed on the community asset register at South Cambridgeshire district council. It is not clear at this moment exactly what, if any, protection this might afford, but it certainly will not detract from their community value for the future.

Your views and ideas on any way we can help local business would be welcomed.

Cllr Enid Bald

New year - a fresh look at the parish council

THE new year brings an urge to re-evaluate: the lengthening days might also bring energy and enthusiasm to carry the results through to action.

These are times of great change for parish councils - you might already be aware of some of these. The Localism Bill, development of our Neighbourhood Plan and the changes in the county and district councils mean that greater responsibilities are being delegated to us, with a wider range of work to be handled. We now pay for some street lighting and some roadworks (no, not filling the potholes!), and have taken on more that used to be the remit of other local authorities. Parish councils have little direct power, but we do have a great deal of responsibility - and we usually get the blame for things beyond our remit, with rather little credit for what we do or protect.

Linton parish council has decided to have a root and branch review of our working practices and procedures. Over the years we have reviewed and improved many aspects. For example, recent reviews of documentation, under the chairmanship of Roger Hickford, saw the leases of our buildings and land revised, and the recreation ground registered for the village.

The current wider-ranging review has been triggered by a recognition of some important drawbacks in the way that we currently work. We need to complete our duties more effectively and efficiently, to communicate what we do, and interact more effectively with Linton. The perennial problem of the time taken to make decisions and complete work is well known, and working groups and delegated groups could often complete projects more effectively.

The evaluation of working practices will include a review of where we work, how we present ourselves, communication, the technology we need and ways to complete work in the most effective way. We also need an efficient means of recording the progress of projects that are underway to ensure that they move efficiently to completion. Too many projects are forgotten when the councillor most involved in them is no longer part of the parish council.

The clerk is our proper and legal officer, the one who keeps minutes and other paperwork, is responsible for putting into action the decisions of council, and is the main contact with the public. The clerk needs to have methods to help her to complete her work most effectively, and to record this so that you know what is done on your behalf.

We do not have much time to reshape the way that we work within the parish council, with the village and with external groups, as we have elections soon - we should prepare to hand over the ongoing projects and to show you just how much we do for the good of the village.

Of course, we are always open to criticism, but if you can help, or feel you can do better, then come and join us - we have a vacancy.

Cllr Enid Bald

Area between the High Street and Meadow Lane which is in need of road surface improvements



Picture by Sue Parry

Parish councillor vacancies update

FOLLOWING last month's article many thanks to all those who have come forward and expressed an interest in becoming a parish councillor. So far one of council's four vacancies has been filled by the co-option of Ms Beatrice Ward. The filling of two more vacancies by co-option will be decided at the next council

meeting (as we go to press) on 23rd January and a further two people have made enquiries. Please still come forward as parish council elections are due to be held in May, if there are more than 15 nominations.

Parish council office

LINTON VILLAGE MOTORS
(situated in Great Abington opposite Granta Park)
www.lintonvillagemotors.co.uk
Tel: 01223 830550

- MOT testing
- All makes of vehicles serviced and repaired
- Tyres at competitive prices
- courtesy car provided
- Polite and friendly staff



Mon-Fri: 8.30am-5.30pm Sat: 8.30am-12.30pm

G. DYE & SONS
GENERAL BUILDERS,
GROUNDWORK & MAINTENANCE,
CONSERVATORIES & UPVC WINDOWS, KITCHEN & BATHROOM REFFITS
ALSO INTERIOR & EXTERIOR DECORATING
REFERENCES AVAILABLE

39 The Grove
Linton
Cambridge
CB21 4UQ
Tel: 01223 892089
Mobile: 07961 342887
georgedye738@btinternet.com



Free Estimates



The Dog & Duck
63 High Street, Linton
Tel: 01223 890349
Pub & Restaurant
Open All Day, Every Day

Idyllic Riverside Thatched Pub and Restaurant.
Hearty Home-Made Pub Food.
Be Assured a Fantastic Welcome and a Perfect Pint!!
Free pudding with meal on Tuesday,
Fish and Chips Special on Wednesday
Roast all day Sunday
Check us out at
www.facebook.com/thedogandducklinton

Small Gifts

Watch batteries and straps fitted while you wait.
Jewellery repairs including sizing and polishing.

All repair work carried out on the premises by a professional with 40 years experience.

We stock a selection of:
Silver Jewellery • Photo Frames •
Collectables • Toiletries •
Greeting Cards • Gift Wrap



61 HIGH STREET, LINTON, CAMBRIDGE, CB21 4HS
TEL: 01223 894225

Acupuncture and Massage in Linton
Some of the conditions acupuncture can help ...

- sports injury and tension
- back, knee, hip, shoulder and elbow pain, rheumatism
- fertility optimisation, IVF, pregnancy and menstrual
- headache and migraine, stress
- high blood pressure and circulation conditions
- anxiety and addictions

Peter White MBAcC, MSc, MBAcC.
Call: 01223 891145 for an appointment or free assessment
Email: enquiries@lintonhealth.co.uk

Linton Complementary Health Centre
2b Bartlow Road, Linton

- Acupuncture, Peter White; MSc, MBAcC
- Massage, Peter White; MSc, Dip. Massage
- Shiatsu, Cindy Faulkner; BA, MRSS
- Chiropody, Sharon Bennett; M.Inst.Ch.P
- Counselling, Debbie Soar; NNEB, Dip.Couns

Telephone: 01223 891145
Web Site: www.lintonhealth.co.uk

Council minutes council minutes council minutes council minutes

ABBREVIATED minutes of the meeting of the parish council held at the Cathodeon Centre on Thursday 5th December 2013.

Present: Mrs E Bald (chairman), P Poulter (vice chairman), D Champion, Dr B Cox, S Hill, B Manley, Ms M Mannassi, G Potter, K Wakley, Mrs A Walker and Mrs S Parry (clerk).

Apologies for absence: Councillor Wilson.

Declarations of interest: Cllr Hill declared a non-pecuniary interest under the allotments update item.

Chairman's comments: Nominations were required for the Community Pride Awards. PCSO Leanne Fisher had warned residents of a spate of burglaries. She had asked residents to report anyone seen acting suspiciously and to note any suspicious vehicles too. The Chalklands group had been directed to funding opportunities advertised in the South Cambs district council magazine.

Matters arising from the minutes of the meeting held on 21st November: Cllr Cox confirmed that he had met with a local resident to explain the situation regarding ownership and parking on the Market Square.

Pavilion update: Cllr Manley reported that the roof was now on and scaffolding would be removed shortly. One complaint of speeding by a delivery vehicle had been received. The 5mph safety signs had been stolen or removed on several occasions. The promotional video for Facebook was progressing well and the voice-over had been completed. The changing rooms would be out of use by mid-January but rooms at the village college had been hired.

Allotments update: Cllr Hill confirmed that the allotment association had met and sites had been reviewed and photographed to support the acquisition of land. Once plans and site review had been received council could move to the next stage of compulsory purchase.

Cambridgeshire county council (CCC) minor highway improvement initiative (MHII) 2014/15: A report had been issued based on the chairman's disability access and safety project. PCSO Fisher had recommended that some single yellow lines be changed to double yellow lines at the Infant and Heights schools, and Balsham Road. Confirmation was required from the county council regarding the planned changes to priority at the junction of Balsham Road and the High Street.

Concerns were raised that the speed humps in Back Road did not meet the safety criteria for mobility scooters.

Cllr Cox would seek clarification on the naming of Dodges Lane (see pictures below).

Cllr Manley proposed that the report be accepted as council's MHII bid. The proposal was seconded by Cllr Champion and resolved by the meeting.

Newdigate House on Horseheath Road.

A public exhibition was held by Savills on 11th December at the Cathodeon Centre on proposals to redevelop this site. The scheme proposes the demolition of the existing house on the site and the construction of 12 new residential properties.

A planning application has now been submitted.

Picture by Anne Meeks



CCC statement of community involvement comments forwarded from the planning committee: Cllr Walker clarified that this was an amendment to the existing policy. All parish councils would be statutory consultees from the start and pre-application discussion would take place. Planning officers could be asked to attend parish council meetings regarding applications that would impact on the area. This would be beneficial for those who could not use online facilities.

Consideration of spending options for s106 and precept monies: Suggestions for the use of s106 funding were considered. The village hall was in urgent need of refurbishment and the council representatives would attend the next trustees meeting hoping to help facilitate refurbishment.

The chairman suggested that precept money might also be put towards the installation of a footpath between Symond's Lane and along Back Road or the installation of better lighting. Councillors were asked to continue to send in their ideas to the clerk.

Consideration of the recommendations from the report from the processes and procedures meeting: Following discussion Cllr Walker proposed that the parish council undertakes a review of processes and procedures for areas yet to be defined.

The proposal was seconded by Cllr Champion and resolved by the meeting.

The working group would draft and circulate categories before the next meeting.

Consideration of the recommendations from the grass maintenance sub committee regarding the grass contract for 2014-2017: No recommendations had been received and this was deferred to the next meeting on 9th January.

Update on Savills proposal to develop land to the rear of Newdigate House: It was confirmed that Savills would be holding a public consultation on Wednesday 11th December at the Cathodeon Centre from 4.30pm-7.30pm.

Correspondence received for consideration: Cambridgeshire constabulary had notified changes to the panel meetings, this was noted. Cllr Champion would seek further information and clarification.

Confirmation of maintenance work to be carried out on play equipment following an inspection by Zurich. It was noted that this work was essential for health and safety and formed part of the risk assessment.

The clerk confirmed that Mr Christopher Filby would commence work as temporary village custodian on 9th December.

Consideration of the quotations for tree works: Cllr Wakley proposed that the quotation from Cambridge Tree Surgery along with their recommendations be accepted. The proposal was seconded by Cllr Poulter. A vote took place with seven votes in favour, one vote against and one abstention. Proposal carried.

Note: Copies of the full minutes, reports and documents referred to above can be inspected at the parish council office.



Dodges Lane - between the High Street (at the bottom of Coles Lane) and Church Lane - is having its name researched
Pictures by Sue Parry

LINTON PARISH COUNCIL

Linton Village Hall, Coles Lane, Linton, Cambridge CB21 4JS Tel: 891001

Clerk to the council – Mrs Sue Parry
Email: lintonpc@btconnect.com

Website: www.lintoncambridgeshire-pc.gov.uk

Office hours: Monday 9am–12noon and 4–5.30pm, Tuesday–Friday 9am–12noon
Or by appointment

Dates for full council meetings:

6th and 20th February, 6th and 20th March 2014

All meetings held at the Cathodeon Centre commencing at 8pm

J TRIPLE J FITNESS

★ AMAZING GYM DEALS ★

Best ever! check out these great offers...

GYM BUDDY £20 NEW! (FOR A DOUBLE MEMBERSHIP PER MONTH!)

STUDENT MEMBERSHIP £45

★ STANDARD MEMBERSHIP FROM JUST £22.92 per month! (YEARLY, MONTHLY AND PAY AS YOU GO OPTIONS AVAILABLE)

01223 89 11 64 email: joe@triplefitness.co.uk

www.triplefitness.co.uk

Westlakes

Painting & decorating exterior and interior

Les Westlake
Mobile: 07929 501101
Tel: 01223 892866

Clive Westlake
Mobile: 07900492127

TIM PHILLIPS & Co.

Accountants
Established 1991

Independent, specialist service for:
Small Business • Self Assessment
Personal Taxation

Free initial consultation – no obligation
EASY, FREE PARKING

Copley Hill Business Park, Cambridge Rd., Babraham
Off A1307 between Wandlebury and Babraham
Tel: 01223 830044. www.tpaccounts.co.uk

MHG Garage Ltd

McKenzie & Haywards
Garage LTD

MOT by appointment while you wait
Servicing, Collection & Delivery Service

Unit 3 & 4, Lintech Court
The Grip Industrial Estate
Linton, Cambs
CB21 4XN

Tel : 01223 894140
Fax : 01223 890035
mhgarage@btconnect.com

SQ CAR & VAN SALES

FOR SERVICE & QUALITY
Cars & Vans Bought To Order
Finance Available From 12-60 Months
Extended Warranties Available From 12-36 Months

All vehicles come with MOT, Service, Warranty

All Vehicles Are HPI Checked
Please Visit Our Website For More Information

Linton, Cambridge, CB21 4YP
Call Steve on 01223 892128
07970 485587
www.sqcarandvansales.co.uk
E: sqcarandvansales@hotmail.com

ClearTax
& ACCOUNTING LTD

All your tax and accounting needs, personal and business.
Specialist in tax planning
Free initial consultation
Tax returns from £99^{vat}

Ltd Company Package from £699^{vat}
Local, based in Hadstock

t: 01223 894036
e: janine@cleartax.co.uk
www.cleartax.co.uk

MALLYON & DONALDSON
Linton

Specialising in both Modern and Traditional building methods.

Tel: 01223 891267
Mob: 07941 220868

All contracts finished to a high standard.
Reliable service. Local references available.

Nina, Carl, Nicola and Sue welcome you to

BOYZ 2 MEN BARBER SHOP

Opening Hours:
Monday Closed
Tuesday 9:00am - 6pm
Wednesday 9:00am - 8:30pm
Thursday 9:00am - 6pm
Friday 9:00am - 6pm
Saturday 8:00am - 3pm

Fully air conditioned
LATE EVENING 'TIL 8:30PM
Wednesday

Traditional Hot towel wet shave
no need to book an appointment.

Special rates for senior citizens Tuesday - Friday only

113^a High Street, Linton
Tel: 01223 894481