

STAY HOME

PROTECT THE NHS

SAVE LIVES

Linton heros

WE are so sorry that we could produce, but not deliver, a paper during lockdown as we did not want to put our vulnerable deliverers at risk. However we did publish the full April issue online, with all our usual advertisers listed, at www.thelintonnews.co.uk. We also produced an A4 version online which is easier to read and print out but has few of our usual advertisers listed. We hope to list all of our advertisers for free when lockdown ends.

We have now produced a lockdown version in this reduced format and for delivery by the volunteers.

People said that the Linton News is the backbone of the community but it is the community that provides the strength of the village not the paper.

The backbone of the village is formed by people like the Community Volunteers and members of the Parish Council who did deliver leaflets with vital information to every resident in Linton.

Also the Church who, together with the volunteers, created and now run the local food bank. The volunteers help with shopping, getting prescriptions and other tasks for people not able to do it themselves due to the pandemic (see more on page 7).

Granta Medical has transformed the way they work to protect patients by increasing telephone consultations and taking great care of people attending appointments.

The schools too have transformed the way they work remotely or with children of key workers.

To say nothing of all our local business owners who are heroes for the way in which they and their teams who have changed their businesses to ensure that Linton residents can access food and other supplies from within the village (see page 5 for a full list).

Not to mention all the people of the village who look after their neighbours who are self isolating.

All the above are the heroes of the hour and you can see more about the Linton Community Spirit on page 7.

Editor

Bartlow in Lockdown

OUR WhatsApp group is a hive of activity with neighbours meeting each other, helping each other out with shopping and collections of medications.

Michelle, in our (currently closed) pub, is arranging for deliveries of food for us all and coordinating Bartlow's gifts to the food bank and the staff in Intensive Treatment Unit (ITU). We have baked

cakes for our farm workers — a key service that sometimes gets overlooked.

We have a high proportion of our tiny village in the vulnerable category and a few who are being shielded, ie confined to their homes. So far so good.

Duncan Ogilvy, 893644



Linton Community Help Team update

WE really appreciate your interest and support and wanted to tell you about all the work that's been going on via the Linton Community Help Team, of which the food bank is only part.

We have a leadership team of three people, Ellie, Faye and Yannick, and each person focuses on different things. We also bring in volunteers to help with specific things such as leaflet drops and fundraising as those needs arise.

So far, we have 84 volunteers who have come forward to help, and around 40 active volunteers working in the various teams. Now that the general operations of the team have settled down (touch wood), we are starting to think of ways we can utilise as many people as possible because we know everyone wants to help.

Our regularly active volunteers are split into teams - the food bank, the shopping team, the prescriptions team, dog walkers and the social contact team. Each of these teams has one or two team leaders who act as the linchpin between the team and the central operations management, who coordinates and oversees all the requests and new volunteers. Each Team Leader is supported by a member of the Leadership Team.

Overall, we have 90 individual families registered with us for help so far. Over the last six weeks, the teams have:

- Fed nine individual families multiple times (with a lot of support from many people in the village)
- Shopped for 57 families
- Picked up prescriptions for 75 families
- Walked dogs for two families
- Provided valuable daily phone contact for 11 residents
- Delivered 2500 leaflets twice to every home in the village
- Managed referrals from the Council to support vulnerable residents, and ensure these residents have all the support they need
- Carried out check ins with local residents at the request of South Cambs District council on over 200 people, leading to a few new requests but very appreciated by all
- Managed a very busy mailbox and telephone support system to ensure residents' requests are dealt with quickly and professionally.
- Checked ID and inducted all active volunteers

Linton Community Help Team Update

Linked in with all the necessary agencies and organisations so that we are all working together to support the community.

Put in place all the necessary processes and policies to ensure we are run as professionally as possible.

We are truly grateful for some wonderful donations and a grant from Linton Parish Charities. Preparing for the longer term, we have submitted an application to Cambridgeshire Community Foundation for funding. We hope this will support not only the Foodbank but our wider work teams and areas such helping people with cash flow issues, activities and wellbeing support, costs, and equipment needs.

The highlight for our new Team is the spirit and kindness of all concerned in Linton: those being helped, volunteers, other village agencies and villagers (loving the rainbows), and all our helpers and well-wishers.

Ellie, Faye and Yannick



Keeping busy

AT Chestnut Playgroup we have been busy communicating through Class Dojo and it's been lovely seeing what our children have been busy doing at home.

We have some great bakers in the making by baking bread, cakes and biscuits. We also have some amazing scientists within Chestnut playgroup, some of the children have been making lava lamps, making slime and planting seeds and seeing how they grow.

We had previously arranged to have an Easter egg hunt at Symonds House with the Day Centre but unfortunately this got cancelled, so we decided to make some Easter cards for Symonds house instead with the help from Linton Infants School. We hope this brightened up their day.

We also celebrated cerebral palsy awareness week, by wearing green clothes at home, and autism week by wearing silly socks and sharing these on Dojo.

The children were very lucky to receive a visit from the Easter bunny (following social distance guidelines of course).

I would just like to say how proud we all are of all the children at this very difficult and strange time. The children have been phenomenal with how resilient they are with the new routine they have found themselves in. I would also like to say a huge well done to all of our parents who have been fantastic and so supportive through this time.

Administrator, Chestnut Playgroup



Creating a safer
Cambridgeshire

Protect your children online

POLICE are urging parents and carers to have conversations about internet safety with their children, to protect them from online abuse and grooming. Officers are concerned that with children spending more time at home their use of the internet may increase and with it the dangers of falling victim to abuse.

Child protection is a priority for Cambridgeshire Constabulary and officers in dedicated teams are working hard to protect young people from abuse.

Detective Chief Inspector Andrea Warren said: "The internet can be a great place for information, entertainment and learning, particularly when children are not at school. However, unfortunately there are people actively looking to use it to exploit children.

"We need parents and carers to take an interest in what their children are doing online and have important conversations about what is safe and appropriate.

"A key question to ask yourself is; do I know the person my child is communicating with? If not, this could be cause for concern and act as a warning sign. "There are some fantas-

tic resources available from the NSPCC and other organisations to help you have these conversations and get more information about staying safe online. "Our officers are working tirelessly to protect children in the county and bring those to justice who try to exploit them." For more information on internet safety visit www.thinkuknow.co.uk or the NSPCC website www.nspcc.org.uk.

To report suspected incidents of grooming or exploitation call 101 or visit www.cambs.police.uk/report. In an emergency always dial 999.

Family Centre events

FOLLOWING the most recent Government announcements, we have taken the difficult decision to cancel all of our groups from centres and outreach venues.

We have taken this step to protect you and your families, our staff teams and to prevent the spread of infection. For now, our doors will remain open for pre-arranged appointments and individual callers.

We recognise how important it is that families and community members can continue to access information and vital social support during this time. Our teams are still available to support in a variety of ways; we will use social media to provide information updates and welcome you to contact us on: 01954 284672

For families receiving one-to-one support our staff will be in touch to discuss the help you may need.

Please do not hesitate to contact us if you need our support,
Sally Stephenson, Child and Family Centre Manager



A strange end to the spring term

SO we finally reached the end of the term on Friday 3rd April. I could never have predicted a term would end like this and I can only thank parents/ carers and indeed the whole community for their tremendous support and well wishes.

My team (as always) has surpassed every expectation placed upon them and created some excellent learning opportunities for our children and demonstrated extraordinary courage and commitment in coming into school during these unprecedented times.

On a personal note, the whole concept of home education has been totally disorientating for both children and their parents alike. I am guessing many of our parents never chose teaching as a career but the feedback about how hard their children are working is superb.

In the Puxley household, we have settled into a nice routine of maths with Mr Puxley, English with Mrs Puxley each morning and then a mash-up of other subjects including French, music, car mechanics and household DIY in the afternoon.

There are very similar stories from many of our families and I am very proud at how, as a community, we have pulled together.

I hope that Easter gave the Linton community, at least, a break. Who knows what the summer term will bring?

Finally, I am sure many of us have relatives and friends suffering from this dreadful virus. If you are able to and would like to support our NHS heroes in Addenbrookes, their charity is raising money for intensive care equipment, a vaccine and quicker tests, please donate using this page www.helpyourhospital.co.uk.

James Puxley, Headteacher



Linton Infant School

THIS is a very difficult article to write as I know how the situation is today but who knows what our school will be looking like by the time you read this?

As I am sure you are all aware, school is closed to pupils, apart from those with a parent who is a key worker.

Our whole school staff is continuing to work. Teachers are sending interesting pieces of work to pupils, videoing themselves story-telling and informing parents of ways to help with their own and their children's mental health at this difficult time.

Teaching assistants are supporting this task, office staff are replying to emails and keeping the cogs of the school whirring.

Our caretaker and cleaner are keeping the school premises clean and safe.

Lunchtime supervisors and catering staff are providing food for the pupils and helping in the classroom. It really is a whole staff team effort and I am so grateful for the team we have.

Believe it or not, we really have no knowledge of when schools will return to normal: we learnt, along with the rest of the nation, that schools were closing.

But return to school we shall, at some point. The County Admissions team is still working and offers have been sent to those children who will be joining us later in the year.

If you have received an offer, please contact the school office by email;

office@linton-inf.cambs.sch.uk

Stay safe everyone, and thank you for your support and best wishes.

Kelly Harries,
Headteacher

News from St Mary's, Linton and St Mary's, Bartlow

CURRENTLY, the whole Church of England is suspending public worship and has to close buildings for every other purpose. We sincerely regret this, since so many people find it helpful to visit a church at times of stress and grief. We are particularly sorry that you cannot light a candle at St Mary's Linton at the time of bereavement. Although, a poor alternative, we do invite you, if you are in this distressing situation, to *Show you care when you can't be there* by lighting a virtual candle at

<https://www.churchofengland.org/life-events/funerals/light-candle>

We hope to offer several occasions after the crisis is over for the bereaved to join in bringing their memories and prayers together in church. Meanwhile, we remain active in these ways, and we invite you to join us:

Virtual worship: a service posted on our website and in paper copies which can be delivered to your home. It will be refreshed weekly. Audio-visual media may shortly be used to share in these services online. To request a regular paper copy, please contact the church administrator or the rector.

Church members are joining the coordinated efforts in the villages to support those isolated at home.

Especially, we offer anyone who might be lonely and anxious the chance of a regular friendly phone call. Please contact the rector or church administrator with details of the person concerned (with their permission).

Food for the emergency village food bank can be brought to the church porch from Monday to Friday between 9 am and 11 am.

Rector: Maggie Guite, 890273, www.stmaryslinton.org.uk

Church Administrator: admin@stmaryslinton.org.uk

Lent Lunches

DESPITE COVID-19 and the lockdown, St Mary's members were able to attend three out of six planned Lent Lunches. Each was well attended and a magnificent sum of £815 (including gift aid) has been donated to the Motor Neurone Disease Association (MNDA). This will go towards expenses for care and assistance to those suffering this terminal illness in their own homes.

Our gratitude goes not only to those who enjoyed the soup, bread and cheese but to the hosts and their helpers who accepted the challenge in these trying times. These events enable members of different churches to meet socially as well as helping the unseen MNDA sufferers. Thank you.

Celia Fisher

The Glastonbury Thorn

AMIDST all the concerns about the Corona Virus, a small tree on the south side of the churchyard of St Mary's in Linton has blossomed twice, once at Christmas and again at Easter. Some of the Christmas flowers have turned to berries, and the Easter ones to delicate sprigs of white flowers with beautiful touches of pink.



Copy of the Glastonbury thorn stamp

The tree is *Crataegus Praecox*, the Glastonbury Thorn. I planted it there, shortly after I came to Linton, to commemorate my fifty years as a priest.

The Glastonbury Thorn was planted by Joseph of Arimathea when he came by boat to Glastonbury many centuries ago. Legend suggests that it sprouted where he stuck his stick in the ground as he climbed Wearyall Hill and the crowd gathered round to hear him.

If you look about you, you will see many thorn trees in England but only one that flowers twice a year. The Holy Thorn comes from Palestine and is very special. Over many centuries sprigs have been sent to important people as a kind of bribe for work to be done.

In 1974, when I became the Vicar of St John's Glastonbury, I inherited a special duty of sending sprigs of the Holy Thorn to Her Majesty The Queen and to Her Majesty The Queen Mother to arrive in time for their Christmas breakfast, wherever that might be. I always received delightful letters of thanks from one of the Ladies-in-Waiting for its safe arrival.

Alan Clarkson, 892988, a.clarkson@talktalk.net

THE LINTON NEWS Next Publication 1st / 8th June 2020
DEADLINES FOR NEWS ITEMS Wednesday 13th/20th May
email the editor editor.linton.news@gmail.com
or if no email ring the editor: Fran Armes on 891517

Readers write...

Post and email addresses and deadline for letters are on this page. All letters for publication must have a full name, address or phone number to enable us to check authenticity. Letters may be edited. Opinions are not necessarily those of the Linton News.

Anonymous letters will NOT be published but names and addresses may be withheld if requested.

OUR THANKS

Dear Editor

I just wanted to say a huge thank you on behalf of myself and all my family for the incredible support we received from so many people in this lovely village when my daughter Holly was recently stranded in Laos. Her dream *Gap Year Adventure* was brought to an abrupt end by COVID-19 but then the nightmare of trying to travel back to the UK began.

I had so many messages of love and support during those two weeks as well as offers of practical help, writing letters to Lucy Frazer and the Foreign Office, they made me realise more than ever what a fantastic community we live in and how blessed we are.

Happily, she was able to negotiate her trip home via three separate flights – Laos to Bangkok, Bangkok to Seoul and finally Seoul to Heathrow. She has self-isolated for 14 days with no symptoms and is now enjoying the sunshine once again.

Esther Mulholland

LINTON DIARY

ALL events are cancelled except the Farmers' Market and the bin collections

Farmers' Market

THIS takes place on the first Saturday every month, from 9am to 12 noon in the Village Hall. Yes it is still going ahead with strict Social Distancing and only food stalls.

Bin collection dates

Linton refuse collection: Mondays 12th and 26th May
Linton blue and green bin collections: Mondays 4th and 18th May
Residents in South Cambridgeshire are being asked to put their green bins out on their normal days from Monday 4th May as part of a phased reintroduction of garden waste collections.

Households would usually have two green bin collections between 4th and 30th May but, due to the impact of national social distancing measures, only one collection will be guaranteed. Although crews will do their best to collect as many green bins as possible during the first fortnight, only half of residents will have a guaranteed collection in these first two weeks of May.

Note also : The Bulky Waste collection service has resumed from Monday 27th April.

Black bin waste handling if you are suffering from Covid-19

THE Greater Cambridge Shared Waste Service has published advice on handling waste if your household is displaying symptoms of Coronavirus.

If you're experiencing the main symptoms – a new, continuous cough and/or a high temperature - please be very careful when disposing of your personal waste (including used tissues and disposable cleaning cloths/wipes) at home. The advice for disposal of this waste is as follows:

- It should be put in a plastic rubbish bag and tied when full.
- The plastic bag should then be placed in a second bin bag and tied.
- It should be kept separate from other waste in a suitable secure place on your property for 72 hours before being placed in the black bin as normal.

The principle behind this method is, that after 72 hours outside the body, the virus is no longer viable. This approach will help keep bin collection crews as safe as possible.

Linton Women's Institute



UNTIL further notice there will be no meetings of Linton WI due to the Coronavirus.

At our March meeting Dr Bill Block gave an excellent talk, drawing on his 18 years experience as a beekeeper but because of COVID-19 there was not the space to report on it. We give the full report now.

Monks started beekeeping in woven skeps but the bees had to be destroyed to get at the honey to make mead. Nowadays, beehives comprise a series of wooden boxes called the British National Hive.

There are three types of honey bee, the queen (who never leaves the hive until the colony swarms), the drones, whose sole purpose is to mate with the virgin queen and the workers (sterile females) who do all the work.

The queen is much bigger than the other bees and is mated on the wing producing eggs in her abdomen. She lives for three to four years and can lay up to 1,000 eggs a day, one in each cell. These turn into larvae which are fed by the workers, and then pupate producing the bee. The workers can tell by her scent when she is past it and make a new queen cell. The old queen then leaves the hive.

The drones live only four months in the summer unless they mate, when they die. There are about 50,000 bees in a colony. Bill showed a rock painting of beekeeping from Zimbabwe thought to be 15-20 thousand years old.

Bees have to be collected when they swarm, which can be frightening. Bill showed members several pictures of where swarms end up. To return the swarm to the hive, spray some sugar syrup, lift the top and just drop them in.

Worker bees collect nectar, pollen, resins, honeydew and water and find them by means of dancing (round dance or waggle dance) using the sun and guide the other workers to them.

Besides honey, we get wax for candles and propolis for antiseptics in medicine. Pests of honey bees include woodpeckers, badgers, wasps, mice, bee rustling and viruses.

Sally Proberts, 891021

connecting-us.co.uk

CONNECTING-US is a new website providing listings of businesses and things to do in and around Linton, who are open but maybe providing their services slightly differently during lockdown and beyond.

The site provides basic details of what each business is offering, when they are open, how you can place orders and how you can pay.

It was created by Linton-based Brick Marketing and Nextnorth who are working continually to improve the search engine optimisation of the site – that is how easily it is to get the webpage up on an online search for something that is in it.

Natalie Morris of Brick Marketing says “Social media and websites are even more vital right now, allowing businesses to quickly communicate what they are offering and when they are open. However, social media are only used by 66% of people, leaving 34% of people who are web savvy but not socially active. The connecting-us website provides a permanent record of what is available for people who aren't on social media or would rather check a site than trawl a social platform.”

Local South Cambridgeshire Independents featured include The Linton Kitchen, The Crown, The Dog and Duck Grocery Shop, Wyld Skye, Case Solved Wines, Borakis Foods, Kitsch Hen, The Farmshop at the Old Granary, Saffron Grange and crafts from Molton Wonky and Painted Peppermint. Our ambition is to keep growing this and provide a service to the local businesses and customers now and in the future.

The listing is free for local businesses so if you are still open and want a listing, get in contact via hello@brick-marketing.co.uk or find us on Facebook and Instagram – look for the rainbow logo and the following handles @Connecting-Us and on Instagram @Connecting-Us-Now

Brick Marketing is a boutique marketing consultancy in South Cambs providing digital and traditional marketing support and leadership to businesses across the region.

Nextnorth is a small web agency supporting businesses with web design, development and SEO (search engine optimisation).

Natalie Morris, Founder of Brick Marketing.

Summer fire safety

AS the weather warms up and the sunshine starts brightening our weeks, we welcome the shorter nights and the opportunity to enjoy summer in the garden.

We would urge residents to think twice before lighting a garden fire and consider the impact it might have.

Lighting any kind of fire poses risks. Having a bonfire in your garden might seem a good idea to get rid of waste from a clear out but these can easily get out of control. It could also aggravate health conditions for neighbours, particularly if they are isolating due to COVID-19 symptoms.

When powering up your BBQs and putting out the garden furniture for the summer season, be sure to take note of our top tips below to ensure you have a fun and safe summer in the garden.

- Never leave BBQs or fires unattended
- Keep children, pets and garden games well away from the cooking
- Make sure the BBQ is well away from your fences or hedges-rows
- Don't use petrol to get it going

For the latest news, incidents and safety advice, or to contact us, log on to www.cambsfire.gov.uk. Sign up to email alerts and find us on Twitter, Instagram, YouTube and Facebook.

If you wish to get in contact, please email pressoffice@cambsfire.gov.uk

Cambridge Fire and Rescue Service

Silver linings

I AM not a regular walker but as it is my only reason to go outside at the moment, I have begun to take a daily short walk, just around my immediate neighbourhood. I have enjoyed finding new bits of Linton; who knew that, if you go down the ginnel beside the Complementary Health Clinic, a whole community of houses, with pretty front gardens, is tucked away.

Doing the circuit of Finchams Close (which is a crescent, not a close), more delightful gardens, interesting windows and where we can see the Pocket Park, the chance of glimpsing the odd deer. A blackbird with a white head lives there too. The big willow, which was recently hard pruned, is beautiful in new leaf.

Some days, for a change, I go through Crossways. One day, there was a well-distanced gathering of neighbours, each seated by their own front door, enjoying an exchange of news and laughter. Rhugarve Gardens has some interesting shrubs: a lovely flowering cherry, dark leaves and deep pink blossom.

This week, all the lilacs are in bloom. The warm sun spreads their scent. Apple blossom, promise of better times to come.

Pat Marshall, Finchams Close

Library during lockdown

WHILE library buildings remain closed books currently out on loan are being renewed automatically, and charges have been suspended since mid-March.

Unfortunately it is not possible at the moment to borrow physical books from the library, but Cambridgeshire Libraries' online offering continues to grow to keep you supported, informed and entertained during the lockdown. New online services are regularly added to www.cambridgeshire.gov.uk/residents/libraries-leisure-culture/libraries, so please keep checking the site.

As well as plenty of e-books, e-audiobooks and e-magazines, plus a range of e-newspapers in multiple languages, currently you'll also find free access to the classical music channel Medici.tv and free use of Ancestry Library Edition if you'd like to explore your family tree.

Small business owners may want to take advantage of the British Library's business information resources. If you are not already a library member you can sign up online.

To find live library-led online activities, such as Rhymetime and Storytime, please follow Cambridgeshire Libraries on Facebook. Adult book lovers may want to join in the regular book-themed chats on Twitter – look for #CambslibChat at 2pm every weekday, which includes discussions with well-known authors.

Anna and Lindsay at Linton Library send best wishes to all our library users – we really miss you and can't wait to see you again in person when this is all over. Please stay safe and well.

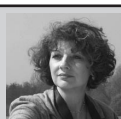
Anna McMahon



COUNTRY MATTERS

Text by Oriel O'Loughlin

Illustrated by Maureen Williams



Hibernation

MANY thanks to Ben for this topic suggestion – apart from seeing all the images of humans hibernating, I wanted to find out more about how our native species perform this feat. Many birds migrate to warmer climes and even we humans mostly hunker down and wait out the winter. Hibernation is not just sleep – the brain cycles that the animal goes through are dramatically different from sleep patterns.

In the UK, the only mammals that actually hibernate are hedgehogs, bats and dormice, likewise some bees, butterflies and ladybirds. The only other species are frogs, toads, newts, grass snakes, adders and slow worms.

In the case of hedgehogs, their heart rate drops from 190 to 20 beats per minute. We imagine them curled up in a dark, quiet and cosy spot but actually they do occasionally emerge to find food, and they also wake up when they're in danger of freezing. Before hibernating, they have to consume loads of beetles, caterpillars and earthworms to fatten up, a sort of panic eating. Dormice grow to twice their size before going into hiding. Bats hunt for hollow trees, roofs, caves and bat boxes, breathing only five breaths per minute. Should you find a sleepy creature, cover it back over and leave it alone to sleep – this applies equally to husbands and teenagers.



Frogs, toads and newts go into what is called torpor, generally for a shorter time and apparently involuntarily. Reptiles rely on the sun to regulate their body temperature, so hibernation is essential for survival. Watch out if you lift a bucket or a stone and disturb Mr Toad, just replace it gently.

And check before you burn a pile of leaves.

After all the humming and buzzing of insects in summer, bees and butterflies find homes to occupy. Queen bees will gorge on pollen and nectar to store fat before burrowing deep into the soil and staying there for up to nine long months. Most butterflies spend the winter in larval stage but brimstones, peacocks, commas, tortoiseshells and red admirals hibernate as adults. You may have seen them in your attic, in the shed, or seen ladybirds on the windowsill. Please don't sweep them away.

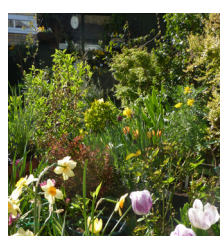
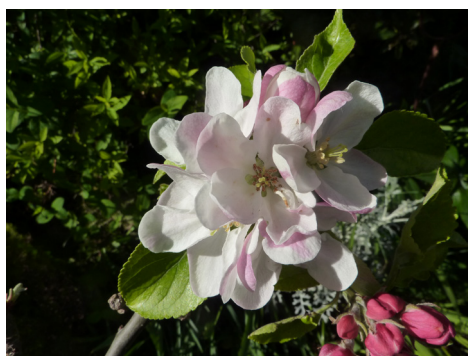
Animals best known worldwide for hibernating are of course bears. We only have Paddington, who had his first bird-watching trip in Linton last summer. Just last week he re-emerged, stretched, ate an alarming amount of marmalade sandwiches, watched the news and immediately returned to bed.

Coronagardening

CORONAVIRUS restrictions have sadly meant that the club has had to cancel its May 12th meeting and annual plant sale on May 16th. On the bright side, the lockdown has meant we have all had more time to work on and enjoy our gardens, be they big or small. Although with garden centres closed, we are all having to find new ways to get hold of seeds and plants, including swapping with family and friends and buying them by mail order and online.

Our own small garden has been a great sanctuary recently. It has been good to get out in the sun and do the seed sowing, pricking out and potting on as we always do at this time of year. The daffodils, tulips, wallflowers and other spring flowers and blossoms have all put on a good display this year. It has also been uplifting to see gardens, including the small one in front of the Village Hall, full of flowers and colour as we walk around the village for our exercise. Perennial and herbaceous plants are now beginning to break into leaf and bud and the first roses will soon be flowering. Our dahlia bulbs are sprouting, promising a splash of colour for later in the year. The bees and butterflies are flying around the garden and our resident robin and local sparrows are enjoying the birdbath. With everything that is going on at the moment it is good to see that nature is carrying on as normal. Keep safe everybody and enjoy your gardens.

Jim and Helen, Linton Garden Club,
lgcsecretary@yahoo.co.uk



Pictures of their garden by Jim and Helen

Linton shops / services

THE situation is very fluid and likely to change at short notice but at the moment :-

The Co-op is offering an early morning opening for elderly and vulnerable residents 8am to 9am Monday to Saturday and 10am to 11am Sunday and we commend the staff for doing a tremendous job in difficult circumstances. Note change to opening 7am to 8pm

The three pubs remain closed but:-

The Crown Inn is offering a very reasonable take-away and hot meal service with generous discounts for NHS workers, also food boxes. Please see facebook@CrownInnLinton or call 891759

The Dog and Duck is offering pre-ordered food boxes please see their website or facebook dogandducklinton

Linton Tandoori is offering a take-out and delivery service on website, tel 890030

Sweet Talk News is offering a delivery service, free for the elderly or those in isolation – see their facebook page Sweet Talk News Linton – Post Office, 893480

Linton Winners is closed

Boswells Bakery is open as usual but please phone a day ahead to pre-order large amounts to avoid disappointment, 890108

Jigsaw bakery is open 890113

Case solved wines is offering an online service for wine and beer, email Adrian@casesolvedwines.co.uk

Farm Shop the Old Granary Vegetable boxes for collection jenny@farmshoplinton.com, 07927 529562

Darryl Nantais Gallery open online, see facebook@DNantaisGallery or advert for contact details

Linton Kitchen advise you to check their facebook and Instagram@lintonkitchen for up-to-date information.

Radwinter Wild Game Company is pleased to offer locally sourced fresh meat products: Refrigerated free delivery to local villages. Card payments accepted
www.radwinterwildgame.com

Farmers' Market first Saturday of the month in the Village Hall with good social distancing and limited to food stalls

Tom's fruit and vegetables, Back lane Linton, contacts facebook and 07510 214046

Clark & Son Wholesale and Catering Butchers – offering meat box deliveries to your door call 01787 319330.

The Pharmacy – you have to wait outside 2 metres apart

Granta Medical – has postponed all face to face GP appointments and some nurse appointments. Now offer an enhanced telephone service and also a non-urgent dedicated email address, capccg.covid19.gmp@nhs.net, 8am to 6pm Monday to Friday. Working to make sure that those who are household will continue to receive their medications.

The dentist Antwerp House is offering a limited safe service for emergency dentistry. Routine appointments can be cancelled by phone especially for vulnerable groups.

Cambridgeshire Family Chiropractic Centre free care and advice over the phone and are also able to offer Emotional Freedom Technique for anxiety, emotional stress and worry facebook@cambsfamilychiropractic

Billson's opticians closed but in emergency contact via website

Marsh Mail

I RETURNED from maternity leave at the start of April. Coming back to be in charge of a virtual school has been rather surreal.

Mr Darby did a fantastic job of leading LVC in my absence; neither of us anticipated his acting headship being quite so eventful. I would also like to thank Mr Brechin who wrote the Marsh Mail in my absence – he has now left the College to start a new role as Deputy Head Teacher. It was strange not being able to say a proper goodbye to him and Mr Pitt after their 13 years of working at LVC. Or to Mrs Clayton, my PA, who retired last month after over 30 years of service to the College. They are all much appreciated and will be missed.

The last month has reminded us all of the power of relationships. While the College remains closed, the human connections that we can easily take for granted under normal circumstances are sustaining us, albeit remotely. When I have been into school on the key worker childcare rota, the school has felt eerily quiet without the hubbub of conversations between students and colleagues.

Our Year 11s are feeling a sense of loss most acutely, suddenly having their summer examinations and celebratory events cancelled. Whilst no teenager would ordinarily say that they were looking forward to exams, it's fair to say that no longer having to sit them, given the years of learning and preparation that has led to this point, has been an unwelcome shock to most; as is not being able to experience and enjoy the usual rites of passage as school leavers.

Students and their families are doing amazingly well adapting to remote learning. It is not easy, as many of you contending with the challenges of working from home will appreciate.

This extraordinary time highlights that LVC is so much more than a building. While we are all looking forward to a time when schools can safely reopen and some sense of normality can resume, our priority at the moment is the health and wellbeing of our College community.

Helena Marsh, Principal

District and County Councillors' Report April 2020

WE hope that you and your families are all keeping safe at this difficult time. There is only one subject and that is how we are all working to prevent the spread of Covid-19. We know about all the good work going on in the villages to support the vulnerable and elderly. Well done everyone, keep up the good work.

South Cambs District Council

You will have been bombarded with advice from all quarters, we certainly have. Do please work with the SCDC Patch Manager, Sarah Grove, who is coordinating the effort in our area. Her contact is: duty.communities@scambs.gov.uk and, of course, we are available to help wherever we can. If emailing Sarah, please put 'Patch 1' into the subject line, so that it gets to the right person faster. Information is also available at www.scambs.gov.uk/coronavirus/

Cambridgeshire County Council

The County Council has an online hub where information regarding volunteers can be accessed www.cambridgeshire.gov.uk/residents/coronavirus/covid-19-coordination-hub-your-community-needs-you - also a simple online search should find you the correct webpage. This is a hub for links to volunteer support as well as help/advice for businesses.

A few practical points about carrying on the work of your parish councils:

Remote Working and Voting

At the time of writing, 1st April, the situation was that the act that went through parliament gave the government the power to change the rules to allow meetings to be held remotely and to have the ability to vote without having to have a quorum of people physically in a room. The government has not yet actioned these powers, so the situation has not changed. We are being told that new rules will come into force *any day now*. We will just have to wait until that happens.

At the District Council we are unable to hold meetings or make decisions until these new rules come in.

Planning

As of now the District Council cannot hold Planning Committee meetings or process requests from Parishes or Members asking for applications to go to committee. There is a growing backlog of applications that will have to wait until we have the legal framework in place to deal with them.

However, the planning process is still working, Planning Officers are taking decisions where the delegation rules allow – which are most applications.

Parish Councils should continue to process planning applications that come to them. This can be done remotely as you are being consulted and asked for your recommendation. The decisionmaker is the District Council so the issue over the voting rules, in this case, does not apply to the Parish Council. However, there may be variations on this depending on your own Standing Orders. NALC is a good source for further guidance: [/www.nalc.gov.uk/coronavirus](http://www.nalc.gov.uk/coronavirus)
Councillors Henry and John Batchelor

Army Cadet Force

MEMBERS of Linton detachment of the ACF are keeping safe and following the government guidelines.

As we are still on lockdown, we are starting a virtual training evening whilst we cannot attend our regular meeting night.

We are keeping morale up with competitions and games through our Facebook page.

We all stand and clap our NHS staff and key workers every Thursday evening. Recently we saluted the Key workers and NHS staff for keeping us all safe at this pandemic time, putting their lives at risk to save ours.

The adult staff are planning events so when we are able to come back to our regular meetings together as a detachment we will be able to carry on with minimum disruption.

Stephen Rudderham
Ssgt Rudderham Dc, Linton detachment
Army Cadet Force
6840rudder@armymail.mod.uk



SOUTH Cambs District Council states on their website that they currently have a backlog for processing applications and are currently processing applications that are dated from 5th March 2020. They apologise for this delay.

Please also note that there was a problem with their website and so some applications were decided without first appearing in the Linton News and so some are listed here.

20/01369/HFUL, 24 Mill Lane, Single storey extension

20/01257/S73, 1 Horseheath Road, Variation of condition 2 (approved plans) and removal of conditions 3 (free constraints & arboricultural impact assessment), 4 (hard & soft landscaping), 14 (surface water drainage) and 15 (foul drainage) of planning permission S/0793/18/FL

20/01224/HFUL, 14 High Street, Construct two brick piers to support/hang metal gate

20/01054/FUL, Clock House Dentistry 2 High Street, Demolition of an existing rear lean-to and erection of a single and two storey extension to a dental practice- resubmission of S/2804/19/FL

20/01151/HFUL, 7 Rivey Way, Single storey side extension and conversion of a single storey outhouse at the side and rear of the house, **Granted Permission**

0/01152/HFUL, 21 Granta Vale, Single storey side extension, **Granted Permission**
20/01638/HFUL, resubmission of

S/0037/20/FL, 4 Rhugarve Gardens, Single storey front, side and rear extensions and first floor side extension **Granted Permission**

20/01183/FUL, Land At 4 The Ridgeway, Erection of a car port, **Granted Permission**

20/01217/LBC, 14 High Street, Installation of a wood burner following removal of the existing fire hood and install a stainless steel flue system, **Granted Permission**

Linton's response to COVID-19; A testament to our community spirit

AS a resident of Linton, I have been astounded and very proud of the way our village has pulled together throughout these unprecedented times.

The local shops and businesses are offering new delivery and collection services, examples being Sweet Talk News who has started a full online shopping service, taking orders over the phone or by parishioners placing orders online with delivery within 48 hours. The Crown Inn and the Dog and Duck Pub are both offering fruit and veg boxes and meat boxes.

Granta Medical Practice, despite being overwhelmed with calls, has still been continuing to offer patients help, advice and support over the phone. The schools have still been open to support children of Key Workers, with teachers and teaching support staff working extended hours. Staff have continued to work at local shops such as the bakers and the Co-op, despite the increased health concerns. They have helped keep the village going.

However, one thing that I have found most inspiring is the set up and the work of the local volunteer group, 'Linton Community Help'.

This group of 80 volunteers, with 36 currently active members, was initially set up by Mrs Faye Parker, and managed under a leadership team of Faye, Mrs Yannick Auckland and Mrs Ellie Paintin. It is now a thriving network of local people offering services to those who most need it. These services include a local community food bank, a shopping service, a dog walking service, collection of prescriptions and compiling information and delivering these in the form of leaflets to all the households in the village to ensure people know of the support available.

The volunteer group is currently supporting over 80 households and is ever growing. This is a tremendous accomplishment and offers an invaluable service within the parish to those who need it. These volunteers have given up their time to support the village and ensure that its most vulnerable members are protected and looked out for.

On behalf of the Parish Council, I would like to thank the group and each and every volunteer, for all their hard work. The level of community spirit in such a hard time has been astounding and truly inspirational.

If you require assistance then please contact the Linton Community Help team on lintoncommunityhelp@gmail.com.

Clerk

COVID-19 and the Meadow Recreation Ground

THERE have been some complaints received by the Parish Council office regarding the use of the Meadow Recreation Ground throughout the lockdown period.

Please note that during the Lockdown, you shouldn't use the park for:

•gatherings

•sunbathing

•use of any of the play equipment

The recreation ground may continue to be used for exercise and dog walking, however please adhere to social distancing.

The Parish Council appreciates your co-operation in these matters.

Clerk

Temporary Changes to Parish Council meetings

ON 2nd April 2020, the government published The Local Authorities and Police and Crime Panels (Coronavirus) (Flexibility of Local Authority and Police and Crime Panel Meetings) (England and Wales) Regulations 2020. These regulations came into force on 4th April 2020.

These new regulations allow Local Authorities to hold meetings remotely, either via phone or video conferencing to allow business to continue whilst public meetings are suspended due to the coronavirus outbreak. Linton Parish Council will be using an application called Zoom to hold meetings remotely.

These changes in legislation have also made it acceptable for the agenda to be posted on the Council website and social media as opposed to noticeboards.

On each agenda, there will be a link allowing members of the public to connect into the meetings. Alternatively, if you email the office, an email invitation will be sent directly to you.

All agendas and minutes will still be available on the Parish Council website:

www.linton-pc.gov.uk.

If you have any questions relating to the new process of the meetings or how to join then please contact the Parish Council Office.

Please note, that whilst meetings are being held remotely, the meeting schedule for the Full Council and for all Committees have adjusted temporarily.

This means meetings are being arranged as and when required and the full council meeting will not automatically be scheduled for the third Thursday of each month.

Clerk

Planning Updates for Linton - April 2020

DESPITE the lockdown, due to the current viral pandemic, planning matters continue.

We had the first LPC virtual Planning Committee meeting, which went well despite a few technical issues. Please note that the public can still participate, online, even if not in person.

We have had several applications for house enlargement, including extensions at 7 Hillway, 7 Rivey Way, 4 Rhugarve Gardens, etc. One is rather sensitive, for 24 Mill Lane, which is in the Conservation Area, backs onto the Village Green and impacts upon the character of the area, the landscape and the setting of historic buildings.

The front walls of the flint houses across

the path were re-built in brick after being hit by a bomb in WW2 – yes, even Linton was subject to un-approved re-development by the Luftwaffe...

Horseheath Road – plans have been submitted, with amendments, following discussions and community input. Concerns remain over ownership of the boundaries, surface water flooding, archaeology, etc, but it is heartening that the developers are trying to resolve these issues and are engaging with the community.

1, Horseheath Road – LPC continues to have concerns over measures to deal with surface water flooding, protection and planting of trees too close to neighbours. Social distanc-

ing in a meeting led to mis-hearing of tree types...blame Covid 19, yet again.

Bartlow Road – the appeal against the rejection by SCDC of S/2487/18/RM was refused, mainly due to the effect on the valued landscape – just as LPC had argued. Meanwhile, another application S/2501/19/RM had been approved by SCDC, despite being almost identical.

The validity of this approval is being questioned, as it would have just the same effect on our landscape.

Meanwhile all work on site has been stopped as the planning conditions cannot be fulfilled. We fight on.

Cllr Enid Bald

Reports Round-Up - February, March and April 2020

CONSERVATION Area Re-appraisal - Cllrs Hine, Gardner and Enid Bald. Reviewed the outline of the Conservation Area, with new areas to be incorporated and others to be omitted, depending on historic or architectural merit.

Next is to evaluate, noting changes since the last appraisal and the effect of these. Volunteers are invited to join the group.

Local Plan Consultation - held at Balsham, although others might be planned for Linton later in the process. Please be aware of the proposals as they come through (in publications or on the SCDC website), and their impact on our village.

Traffic Working Party - Cllrs Manassi, Hine, Enid Bald. See full report and council minutes. CCC waiting & parking restrictions to be considered as a model for parking within Linton. For this, we need clear double yellow lines (as requested in LHI) and delegation of authority for enforcement to PCs.

GCP November meeting re: Rural Transport Hub - it is the only site, would address local parking issues, would encourage bus and cycle use, the need was researched in January 2019 by GCP. LPC wrote letter of support.

Concerns of residents are for statutory consultees. e.g. the police, to assess when planning permission is sought. Correspondence items were referred to relevant groups. Back Road - to work with Hildersham PC. Road flooding - riparian owners to be requested to clear or re-dig their ditches.

Chalklands Residents Association - Cllr Enid Bald invited. Melanie Laing, the Community Warden, described her work to help older residents remain living independently in their own homes. Employed by Age UK and funded by LPC, S

CDC and CCC, client fees and ACES donations, around 25 households are supported through contacts, small jobs, information, etc. A lively meeting!

Rivercare - now renamed FROGs (Friends of the River Granta...nearly). A litter pick on Camping Close and along the Granta, from Horn Lane Ford to Pocket Park by volunteer FROGs and Froglets - amazing what we found.

At the meeting that followed Helen Brookes gave updates on funding, organisation and equipment - even a grappling hook! Background given on previous river/flood-plain restoration work by LPC.

Possible projects discussed for working together. Congratulations and thanks to all participants.

Stansted and Future Airspace - Representatives of Parish, Town and Borough Councils surrounding Stansted. All are affected by the flight paths (a concern for Linton), type of aircraft, noise, emissions, etc.

This was a focus group on how the changing needs for airports, business and travel could be met.

The range of interests, experiences and knowledge of attendees was wide, with concomitant range of opinions and suggestions. As LPC has no agreed views on these matters, the views were personal - to the benefit of Linton, I hope. The charity donation is going to ACEs.

Cam Valley Forum - Helen Brookes of FROG, Cllr Enid Bald. Despite the rain, river levels are still only around 83% of normal flow: we need to manage the river for both drought and flood. The presentation showed the work of the EA, mainly on fish and fishing - the largest participant sport. With the right conditions, fish and other wildlife, will thrive.

Ways to improve our rivers for accessibility, environment, leisure and wildlife were described. We have a rare chalk stream - we should give it due regard.

Recreation Ground Meeting with Tom Mytton-Mills (contractor), Sam and Sid Taylor (neighbouring Farmers), Cllr Enid Bald, on the 22nd April.

The ditches along the western boundary have not been cleared for at least 30 years. It is LPC Riparian Duty to do this to help drainage and prevent surface water flooding (remember the torrent and standing water early this year?).

The Culvert was also blocked not having been cleared despite many reports that this work should also be done. The result of this had been that the Clapper Stile had rotted and a void had appeared where water gathered and flowed above the roof of the culvert. This will now be repaired.

Thanks to the co-operation of Little Linton farmers, much of the work will be done from their side of the ditch (which is safer for the public) and they will also facilitate the removal of the woody debris.

Many thanks to all, and the advice of Rob Mungovan. Just for interest, the culvert was not constructed of bricks but of cement-filled paint cans...who thought of that one?!

GCP/City Deal - In the new scheme of things, we are to have a virtual meeting regarding the plans for a westbound bus lane from Bartlow Road to the Grip (A1307 CSET Phase 1 - Scheme 14). This might improve bus travel times, but is the work and expense worth it for so few x13 buses?

Briefing meeting at South Cambridgeshire District Council (SCDC) regarding COVID-19 - Attended by Cllr John Bald on behalf of Linton Parish Council.

Everyone has been working very hard. All villages have good volunteer support, and vulnerable residents safe. All on govt list of vulnerable people (advised to stay at home for 12 weeks) are being contacted.

SCDC expects increased demands from volunteers, and is prepared for this. SCDC have distributed £10m in govt grants so far. Any businesses in trouble who might not be known, should make contact with SCDC, who would like to be a one-stop shop. A drinks wholesaler in Cottenham has started to sell direct.

A business survival and recovery policy is being rapidly developed. Council Tax support scheme can help people who have been laid off work. Anti-fraud checks are in place. Information on all grants via SCDC website. No plans at present to compensate PCs for loss of income from closure of public buildings.

Business rate relief has been implemented immediately. 1700 SMEs in district, £10m in grant funding still available. Usually takes a week from application to payment. Apply via SCDC website.

Council Tax receipts by direct debit are holding up, but direct debit "holiday" not possible as SCDC has to pay Police and County Council £11.5m up front.

Parish Council precept payments will be paid quarterly, rather than the first two being paid together. SCDC has good reserves.

SCDC has some properties that may be available to people suffering domestic violence.

The planning process has to continue. New Idox enterprise software for planning to improve efficiency. Team leader is the main contact (ours is Julie Ayres). "All parish council comments are given full weight". It is "normal" for most applications to be delegated to officers. "PCs are consultees and not grouped with residents' comments."

Green bin collection is suspended. Please report flytipping to SCDC, who will do best to collect.

Cllrs John and Enid Bald

PLEASE NOTE; due to the COVID-19 Pandemic, there was not a Full Council meeting held in March 2020.

LINTON PARISH COUNCIL

The Village Hall, Coles Lane, Linton, Cambridge CB21 4JS Tel: 891001

Clerk to the council - Ms Kathryn Wiseman

Email: enquiries@linton-pc.gov.uk

Website: www.lintoncambridgeshire-pc.gov.uk

Facebook: www.facebook.com/lintonpc

Office open: Monday, Tuesday, Wednesday and Friday 9am - 12noon.

Closed on a Thursday.