

Christingle service  
St Mary's church  
3pm  
6<sup>th</sup> December

Over 2,350 copies  
distributed  
free in Linton,  
Hildersham,  
Hadstock &  
Bartlow

# THE LINTON NEWS

December  
2009  
Vol. 23 N<sup>o</sup> 9  
Publication date  
Monday 7<sup>th</sup> December

E & E PLUMRIDGE  
Design & Print  
41 High Street  
Linton  
01223 891407

Established 1987

www.linton.info e-mail lneditor@linton.info

## Shirley Williams at LVC

**B**ARONESS Williams of Crosby, the former Education Secretary Shirley Williams, visited Linton village college last month to open the Newton building and present the annual awards and GCSE certificates to leavers.

Baroness Williams has been at the heart of British political and academic life for more than 30 years.

As Education Secretary from 1976-79, she was a strong supporter of comprehensive education and an early advocate of raising standards in schools.

In 1981, she was one of the founder members of the Social Democratic Party (SDP) and later became leader of the Liberal Democrats in the House of Lords.

The official opening of the Newton building, which includes science labs, a dance studio and gymnasium, began with the handing over of a ceremonial key by councillor David Harty, cabinet member for learning at Cambridgeshire county council, to Jane Bowen, chair of

governors at LVC.

Baroness Williams joked that the ceremony reminded her of the state opening of Parliament earlier in the day, when the monarch's crown is removed from the Tower of London only to be returned at the end of the day.

She later addressed the annual presentation evening for Year 11 students, reminding them that village colleges were one of the great educational experiments of her lifetime.

"Education is not something separate from the community, it is something that grows out of the community and Linton village college is an example of that," she said.

She congratulated the students on their achievements and spoke of the challenges facing this generation of school leavers.

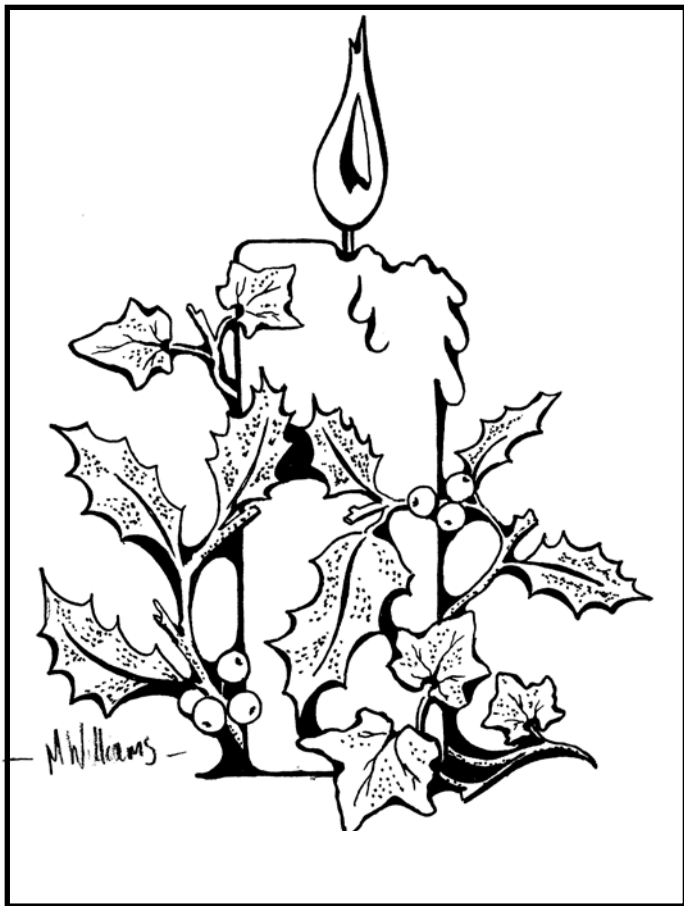
The evening included musical performances from two members of the class of 2009: Daniel Searjeant on the saxophone and Victoria Clifton on the flute.

Tony Kelly  
891233 (ext 158)



Shirley Williams opens the new college building

Picture: Roger Lapwood



ALTHOUGH Darryl Nantais is no longer writing for us, Maureen Williams has delighted us with this very appropriate illustration for Christmas.

With this, we wish all our readers a very Merry Christmas and a happy, healthy and prosperous New Year.

The Linton News team

## Lest we forget ...



Silent tribute: remembering the fallen at conflicts around the world

Picture: Roger Lapwood

THE TV news channels and national and local newspapers report most days on another fatality or the horrific injuries received by soldiers on operations in Afghanistan.

The troops with these injuries are being repatriated either to Selly Oak hospital, Birmingham, for intensive care or Headley Court, Surrey, to be fitted with artificial limbs and to have rehabilitation.

The staff handling these cases of complex physical and mental injuries, or those people who line the streets of Wootton Bassett to pay their respects, and especially the families who have lost a loved one may need counselling.

The Royal British Legion is in the forefront to administer to most of these cases and the cost is very demanding.

Thank you all for your generous donations; they can make a big difference. As the local poppy appeal honorary organiser, I thank you all most sincerely.

Laurence Kidman

A PARADE gathered at St Mary's church at 2.30pm for the annual Remembrance Sunday service. The day was fine and the mood sombre.

The daily casualty figures from Afghanistan seemed to have brought home both the reality and the awfulness of war, the dangers of peace-keeping and the very personal grief of families and friends.

Somehow the service was no longer only about time past and far-off wars but about something that touches us all daily.

The Rev Steve Griffiths spoke as one who had no memory of the Second World War and encouraged the young congregation to work for peace. Rev John Hardacre led the prayers.

The parade proceeded to the war memorial where the roll of honour was called, the Last Post and Reveille sounded, and silence kept. It was a moving ceremony and then the crowd quietly dispersed.

Alan Clarkson

## Editor in the wings

OUR search for a new editor could be over. A volunteer has come forward and we very much hope he will take on the position in the near future. We will have more details next month.

By the way, we still need another sub-editor. Newspaper experience is not necessary but a knowledge of computers, especially Macs, will be helpful.

Anyone who has any spare time once a month and fancies a challenge, please contact Wendy Foster on 891626.

## E-mail problems

WE had serious e-mail problems at the beginning of November when we received no messages for nearly two weeks.

We have no idea who sent what or what the messages were.

Apologies if you sent your article in and it disappeared into the ether and you waited in vain for it to appear in the paper. Now you know why.

LNT

## Glasses found

A PAIR of prescription glasses were found on a footpath near Hildersham on that very wet and windy Saturday, 14<sup>th</sup> November. Please call.

Kate France, 891602 or e-mail katefrance@linton48.freeserve.co.uk

## Too good for jumble ...

JUST right for watching the Christmas TV programmes, we have a TV stand on offer, 91cm wide and 45cm high, with three black glass shelves and the Proteam heated ailer (in perfect condition) is also still available.

The revolving bookcase raised £20 for the ACEs and the boy's mountain bike raised £20 for the Guides. To buy any of the above or to offer an item to profit a charity, please phone me.

Kate France 891602  
or email katefrance@linton48.freeserve.co.uk

## The Bard of Linton (Of Christmas past)

IT was cold – very cold – and dark  
Well it was 5am on Christmas morning  
There were a few lights on in the village,  
Young children could not wait to see what  
Santa had brought them.

As I pushed open the door of the cowshed  
The familiar warmth and smell came out to meet me  
– as it did every day of the year  
A quick walk though the yard  
To see if we had any new arrivals  
Yes, a little bull calf  
Born to one of our best cows,  
Pity – a heifer calf would have joined the herd.

The acoustics in the milking parlour are so good;  
It's like singing in the bath  
(or in King's, but that's another story)  
The time goes so quickly  
After two verses of Once in Royal David's City,  
I am milking the last few cows and joined by old Frank  
He always comes in to help me  
What a good old boy, retired but cannot stop working.

He knows the routine so well,  
Bed up the yards with straw, then fill the hayracks  
A job that's done every winter's day  
No need for talk as we feed the calves  
and swill down the dairy ready for the next milking.  
The milk is in the tank ready for collection  
And we are ready for a good breakfast.  
Happy Christmas.



## What did you do in school today?



**Linton infant staff as pop stars. Can you identify the celebrities?**

Picture supplied by Louise Clark

I REALLY don't know where to begin, so much has been happening at the infant school, so I guess I'll start at the very beginning. The youngest children in the school have settled in really well and have been involved with Operation Flying Pig after hearing a variation of the three little pigs, Some Pigs Might Fly! Children have kept an eye out for the big bad wolf whilst designing and making aircraft, in order that the three little pigs can beat him in an air race.

Our thanks go to the Ashcroft family, who kindly brought their lorry down for the FS children to explore as part of their Mega Machine topic.

Year 1 have been visited by a local magician, David Cridland, who taught them some simple tricks and how to create balloon models. Mr Kirkman came and helped the children compose fireworks music – we weren't quite Handel but we had a go. He also performed a fabulous magic show with a lot of interaction from the children and passed on a few trade secrets so they could amaze their friends and families.

Some comments made by the Year 1 children in their reports after the show...

"He had a monkee and it bit his finga and it was funee wen it bit his finga."

"My best bit was wen we bloo up balloons and I had a graf and it was pinc. I put spots on my pinc graf. It looks good."

"There was a magic hat and it had a rabbit in it." "I lic the show bicos it maiked me laf."

"The muncey torct and maid me laf be cos it cud not say w."

*By children from green and orange class aged 4/5 years.*

Then there was pop stars' and divas' day; the costumes were great and the staff excelled themselves as Amy Winehouse, Madonna, Pink and John Lennon. However, I felt my age especially as no one recognized the Boney M star I had dressed as. The pop quiz in the afternoon confirmed this when I let my team down (who is Lady Gaga anyway?). Year 2 has continued to find out about heroes and have visited the cinema during National Film Week to become film critics. Courtesy of the PSA, the children were transported to an exclusive viewing of the blockbuster *Bolt* at the cinema. Since this visit, the children have worked on character profiles and have written reviews.

As mentioned in a previous issue the school has been teaching values and during November we focused on friendship. To start the theme we welcomed back the Blunderbus Theatre Company who performed the story of The Rainbow Fish. To consolidate this work, the children have created a five foot long papier mâché fish, decorated with a scale from every pupil in the school. Every child has written a special friendship message on the back of a CD fish which are on display in the entrance hall.

I always find it amazing when asked the question: "What did you do at school today?" The answer is nothing. Why the staff and I are so tired doing nothing is a mystery!

Louise Clark

## Second Christmas tree festival for Linton

FOLLOWING the success last year of Linton's first ever Christmas tree festival, St Mary's church will again be filled with decorated and brightly-lit trees from Friday 11<sup>th</sup> December to Sunday 13<sup>th</sup> December. The emphasis this year is on the community of Linton and there will be trees dressed by local businesses as well as groups and individuals. With more trees planned than last year the event promises to be a visual treat for all ages.

Other activities planned over the weekend include mulled wine and mince pies on Friday evening, stalls and a variety of refreshments in the infant school on Saturday and, for the children and the young at heart, a special guest appearance by Father Christmas himself. On Sunday, following the regular morning services, the church will again be open for visiting, with light refreshments being served and, to close the weekend, an informal service of carols will be held on Sunday afternoon. This is a festival planned for the delight of the whole village and it is hoped that it will become an integral part of our Christmas celebrations.

Gill Powell 893664

## La Pipelette (Chatterbox)

A L'ÉCOLE, en classe, nous avons parlé de ce qu'il faut faire sur internet. Mais commençons par la liste de ce qu'il ne faut pas faire « on-line ».

Il ne faut pas donner d'informations personnelles comme: votre nom et prénom, votre adresse, numéro de téléphone, code postal, mot de passe, liens et noms de sites web, etc.... Tout peut arriver. Vous ne savez pas qui peut lire ces informations.

Les personnes qui voient les informations personnelles vont chercher et savoir encore plus de chose sur la personne.

Et maintenant, parlons de que nous devons faire; pour commencer, demander la permission aux parents avant d'utiliser l'ordinateur.

À bientôt.

## PLODDING ALONG An update on police matters

### Cyclists still not getting the message

IN the cold, dark and early hours of this week, the neighbourhood team, your local officers from Linton, Fulbourn, Sawston and the dog section carried out three search warrants across the Linton area under the misuse of drugs act. Three people were arrested for drugs offences and are being dealt with for this.

Motorists, please may I again, remind everyone to watch your speed when travelling through the neighbourhood.

We are still speaking to our younger members of the vil-

lages about being out at night on their bikes with no lights. Please can we all ensure that bicycle lights are fitted (although the problem seems to be they just fell off!), cycle helmets are used and that lighter coloured clothing is worn when out and about. We are determined to get the message across and that our residents are safe and visible on the roads this winter.

Take care.

PCSOs Chris Pulley and Leanne Allan

We welcome your feedback and we will aim to get back to

you as soon as possible. Please be aware that responses may take longer at times of high demand. Alternatively, you can ring your neighbourhood team on 03454 564564.

In an emergency, when a life is in danger or there is a risk of violence or serious injury or when a serious crime is being committed, please call 999.

For all non-emergencies, general enquiries and to report crime please call 03454 564564. To give information anonymously about crime, please call Crimestoppers on 0800 555111.

## Out-of-hours changes for patients at Linton health centre

AS many of you will have read in the national newspapers, Cambridgeshire Primary Care Trust has withdrawn its contract from Take Care Now (the out-of-hours provider for our patients).

From 1<sup>st</sup> December out-of-hours care will be provided by CAMDOC, which is an established out-of-hours organisation run by Cambridgeshire General Practitioners. CAMDOC will also be taking on East Cambs and Fenland practices as well as Linton and will be renaming themselves as Urgent Care Cambridgeshire (UCC) to reflect this larger area. CAMDOC has been delivering high quality care to Cambridge practices since 1993 and uses local doctors who have a good understanding of patient needs and a good knowledge of how local health systems work.

The main base for UCC is at Chesterton medical centre, Union Lane, Cambridge CB4 1PX. The emergency service is available seven days a week from 6.30pm to 8am and all

weekends and bank holidays. Additionally, there will be a service at Addenbrooke's hospital A&E department on Saturdays and Sundays from 9.30am to 7.30pm and on Mondays 7pm to 11pm.

Patients can be reassured that they can continue to access the out-of-hours service by phoning the surgery on 891456 or 892555. Alternatively there is a low-cost direct number – 03301239131. Calls will automatically be transferred to the Chesterton base of UCC.

The call handler will record the details and pass them to either a doctor or nurse for triage. The doctor/nurse will consult by telephone and, if examination is necessary, will invite patients to either the Chesterton or Addenbrooke's base depending on the day and time. If a home visit is necessary this will be arranged with the doctor.

Dr Silverman & Partners  
Linton Health Centre

## Wadlow wind farm approved by Whitehall

THE appeal against South Cambridgeshire district council's decision to refuse permission for a thirteen turbine wind farm at Wadlow, between West Wratting and the A11, has been won and that decision overturned. This is a blow for the opposition group and the local parishes who fought so hard to protect the area from this intrusion.

The inspector and the Secretary of State, who made the final decision, conceded that there would be real harm to the landscape character and quality. However, they concluded

that whatever damage was done was outweighed by the much more important "achievement of national policy objectives." So it would seem that those in Whitehall are happy for us to live with the consequences of this week's national policy objective.

This is an entirely separate planning application from the Linton wind farm proposal. That planning application has also been recommended for refusal by SCDC; the appeal will be heard at a public enquiry in February.

Obviously the outcome

of the Wadlow appeal is not encouraging. In particular the weight given to national policy objectives would imply that the government wants to push forward renewable energy projects regardless of the damage done at a local level.

However, it is not necessarily all bad news. At least this gives us another argument. With thirteen turbines already on our doorstep, eight more could look like overkill.

John Batchelor  
County and district councillor

**Elite**  
Wedding Photography  
Formerly Julian's Photography of Linton  
Tel: 01223 892056  
Professional, affordable, wedding photography.  
WWW.ELITE-WEDDING-PHOTOGRAPHY.CO.UK

**Precision**  
Carpentry & Joinery  
Fast, reliable, friendly service and precise craftsmanship.  
For competitive estimates contact:  
James Tonry- 07736 273489 or  
Ryan Greenwood- 07795 464086  
www.carpentryjoinery.co.uk

**DESIGNER DRAPES**  
NEW line  
of voiles & fabrics  
**BLINDS & CURTAINS**  
all types made to measure & ready made  
Linton, Road Hadstock CB21 4NU  
www.designerdrapescurtains.co.uk  
**01223 890556**

**TIM PHILLIPS & Co.**  
Accountants  
Independent, specialist service for:  
**Small Businesses - Self Assessment  
Personal Taxation**  
**EASY, FREE PARKING**  
Initial consultation **FREE** with no obligation  
Copley Hill Business Park, A1307 Babraham  
Tel: **01223 830044**. www.TPaccounts.co.uk

**LINTON VILLAGE MOTORS**  
(situated in Great Abington opposite Granta Park)  
www.lintonvillagemotors.co.uk  
Tel: 01223 830550  
GoodGarageScheme.com  
• MOT testing  
• All makes of vehicles serviced and repaired  
• Tyres at competitive prices  
• courtesy car provided  
• Polite and friendly staff  
**Mon-Fri: 8.30am-5.30pm Sat: 8.30am-12.30pm**

**PLUMBLINE**  
Plumbing & Heating  
RELIABLE COMPETITIVE  
FRIENDLY SERVICE  
Linton  
01223 893903  
Don't delay call today



# Readers write...Readers write...Readers...

Post and email addresses and deadline for letters are below. All letters for publication must have a full name, address or phone number to enable us to check authenticity. Letters may be edited. Opinions are not necessarily those of the Linton News.

## Ellen Cooper's birthday

Dear Editor

To the many of you who may remember her, I would like to give you an update on my mother, Ellen Cooper, who formerly lived in Tower View, Linton, until February 2007.

Unfortunately mum left the village in very poor health and it was very much a time of sadness when she needed to give up her home and leave her friends without the opportunity to say goodbye.

I am very pleased to say that mum's general health is much improved, although her memory is rather patchy and she now uses a wheelchair. She spends her days knitting for charity and has made almost 100 jumpers that are being sent to the third world.

It is with this magic number of 100 in mind that I am writing to you all as mum will be 100 years old on 13<sup>th</sup> January 2010. Many of you always sent her cards on her birthday and I thought that you would like the opportunity to join her family in doing so once again on this special date. The address to send them is:

St John's Nursing Home,  
Rownhams Lane,  
Southampton, SO16 8AR

We would love to hear from you with news of the village.  
Mary Butler

## On the road with Kelvin

IN response to a Linton News' invitation to write a small article, it has made me think back over the last 35 years of driving tuition and brought several smiles to my face. I did my training with Linton School of Motoring and stayed with Alan and Tony Chapman for 10 years before branching off on my own. Over the years I have met some very interesting people from all walks of life and could probably write a book - if I didn't accept that most things are told to me 'in confidence'.

For a number of years the senior pupils at Linton village college were given advice about buying a car, mechanics, insurance and tuition in driving, the latter given by myself. This was an afternoon a week for six weeks, and was so successful that it was copied by a couple of other village colleges.

There are lots of scenarios I could talk about but two in particular spring to mind. I taught seven children from the same family to drive and they all passed their tests first time - their Mum was so proud she had an article printed in the local newspapers. The second was an unusual request but one which I was quite happy to do. A very proud dad asked me to take his daughter for a driving experience on a private road for a birthday surprise - the unusual point about this is that the lady was blind. Her friends and family were all pleased to see her enjoy this event.

Over the years the attitudes of young people learning to drive have changed a lot, but I like to think that they keep me young at heart.

May I take this opportunity to wish everyone a very happy Christmas and prosperous New Year, with special thanks to McKenzie and Hayward for keeping my car well maintained.

Kelvin Norman  
Kelvin School of Motoring

## Memories of Freemasonry

Dear Editor

I found the memories of an old Lintonian by Cllr John Lindsell in the Linton News very interesting. It has prompted me to wonder how many of the Linton residents of today are aware of the existence of Linton Masonic Lodge, known as the Granta Lodge, named after the River Granta which of course flows through Linton. The Lodge was formed immediately after the Second World War in 1945, with residents of Linton being the core membership and with others from the surrounding area. One of the initial members was the late Peter Taylor, who older residents may remember with affection.

Many people may ask what is the purpose of a Masonic Lodge. Well, it is an organisation of like-minded people who share certain ideals. Freemasonry dates back about 500 years and has a worldwide membership. An important purpose is to raise funds for charities and other worthwhile causes. For example the organisation assists Addenbrooke's hospital with funds for equipment, and the air ambulance. Locally the Granta Lodge supports the Granta school at Linton village college. The Granta Grapevine talking newspaper for the blind, which is run by volunteers, is another example of a worthwhile cause which is supported by the Granta Lodge. In the early days meetings were held in the Shepherds Hall, Linton and at the Linton village college; however today the meetings are held at the Masonic Hall in High Street, Newmarket.

If you would like to know more about the Granta Lodge, please contact William Barnett 891387 or Bruce Conochie 894460.

WC Barnett  
Wheatsheaf Way

## OUR THANKS

Dear Editor

Through the Linton News I would like to thank everyone for their kind gifts, cards and good wishes on my retirement from the post office.

I would also like to thank all the post office staff for their loyalty and hard work during my fourteen years as sub-postmistress and wish Mark every success as our new sub-postmaster.

I still seem to be very busy at the moment but I am

enjoying my new-found freedom and hopefully will soon be able to take things at a more leisurely pace.

I am sure I will see many of you around the village from time to time.

Anne Willers  
Lonsdale

BED and BREAKFAST  
ANN & GEORGE PEAKE  
Linton Heights  
36 Wheatsheaf Way, Linton  
Tel: (01223) 892516  
Comfortable & friendly

## ClearTax & ACCOUNTING LTD

All your tax and accounting needs, personal and business.

Specialist in tax planning  
Free initial consultation  
Tax returns from £99<sup>vat</sup>  
Based in Hadstock

t: 07896 298253  
e: janine@cleartax.co.uk  
www.cleartax.co.uk

## Kitchensense (Linton)

For a dream kitchen that is tailor made to your needs and budget.

Over 20 years' expertise in kitchen design

Please call 07986 437 989 for your free design and quote

THE LINTON NEWS Next Publication 4<sup>th</sup> January 2009  
DEADLINES for ADVERTS Monday 7<sup>th</sup> December  
NEWS ITEMS Friday 11<sup>th</sup> December

ITEMS FOR ADVERTISING MANAGER  
Priority is given to Linton businesses  
Our advertising Manager is Judith Rouse  
email: adds@linton.info

ITEMS FOR THE EDITOR  
Can be put in the Linton News Box in the Post Office  
Editor: Wendy Foster  
email: ineditor@linton.info phone 891626

For distribution queries contact: Kate France 891602

## Traditional Acupuncture

An Ancient and Trusted Way Of Healing

Some complaints treated by acupuncture:

- \* Stress/Anxiety
- \* Low energy
- \* Depression
- \* Headaches
- \* Colds/Low immune
- \* Pain (relief of)
- \* Back pain/Sciatica
- \* Arthritis/Rheumatism
- \* Stiffness/Tension
- \* PMT
- \* Insomnia
- \* Asthma/Allergies
- \* Digestive
- \* Menstrual
- \* Menopause

## Therapeutic Massage

Beat Stress, Recover More Quickly from Injury, Feel Energised!

Practitioner

Peter White MSC, MBAcC, Dip Massage, Dip TCM China, Insured  
For a free initial consultation and bookings call: 0845 430 9120

# LINTON DIARY

For entry in this list, ensure that your event is written into the diary in the Post Office.

You may also send an email with your event details to diary@linton.info, or use the form on www.linton.info.

Details of items in bold type may be found elsewhere in this edition.

WEEKLY

- Junior badminton, 10am-12noon Sundays SC
- Adult tennis coaching, Sundays (call 07791 150141) SC
- Jazzercise, 6.45pm Mondays and Wednesdays Granta School
- Pilates, 10 and 11.15am Mondays VH
- Yoga, 7-8.30pm Mondays term time Hadstock VH
- Whist drive, 7.30pm Mondays VH
- Men's all-age keep fit club, 8pm Mondays SC
- Ladies' netball, 7.15-8.30pm Mondays SC
- Cempa wu-shu karate, 7-8pm Mondays (age 5 upwards) LVC
- Linton theatre workshop, Mondays (call Joe 01440 703701)
- Aquacise Mon, Tues and Wed tel 890248 to enrol Granta school
- WEA, 10am Tuesdays VH
- Scrabble club, 10am-12noon alternate Tuesdays Church pavilion
- Linton Granta playgroup, 10am Tuesdays and Thursdays term time LVC
- Hadstock toddler group, 2-3.30pm Tuesdays term time Hadstock VH
- Ladies' football, 7-8pm Tuesdays LVC
- Linton chess club, 7.30pm Tuesdays CC
- Granta duplicate bridge club, 2-4pm Tuesdays VH
- Tae Kwon Do, 6-8pm Tuesdays and Thursdays SC
- Ladies' badminton, 8-10pm Tuesdays SC
- Senior mobility, 1-2pm Tuesdays Hildersham VH
- IT club, 7pm Tuesdays CC
- Yoga, 7.30pm Tuesdays term time Hildersham VH
- Linton radio race car club, 6-10pm Wednesdays VH
- Men's keep fit club, 8pm Wednesdays SC
- Tots-in-tow, 10-11.30am Wednesdays term time VH
- Music Matters, 10.30am & 1.50pm Thursdays VH
- LVC badminton club, 8-10pm Thursdays SC
- Carpet bowls, 7.30pm Thursdays VH
- Yoga class, 8-9pm Thursdays SC
- Mums and Tots Mocha house, 2-4pm Fridays Church pavilion
- Tots music group, 10.30 & 1.30 term time Fridays URC
- Buffy bus, 11am-12.15pm Fridays Hadstock village green
- Junior basketball, 6-7pm Fridays SC
- Bridge club, 7pm Fridays CC
- Adult tap dancing, 7.15-8pm Fridays term time VH
- Granta badminton club, 8-10pm Fridays SC
- Mini kickers, 10-11am Saturdays term time LVC

For sports centre courses please call Mark Wilson 890248

DECEMBER

- 1 **WI. 7.30pm** VH
- 2 Reading group, 8pm Dog & Duck
- 3 Parish council meeting, 8pm CC
- 5 Farmers' market, 9.30am LVC
- 5 **Chestnut Christmas fair, 2pm** VH
- 5 Winter dance party, 8pm VH
- 6 Christingle service, 3pm St Mary's
- 7 **Linton carers group, 2-4pm** VH
- 8 VIP meeting, 1pm Chalklands CC
- 8 **Gardening club, 7.30pm** VH
- 8 Reading group, 8pm Dog & Duck
- 9 **ACEs trip to Bury St Edmunds, 9.30am** Dog & Duck
- 10 Luncheon club, 12.15pm The Crown
- 10 West Highland railway group, 8pm Black Bull, Balsham
- 11 WI walk, 10am, Dog & Duck
- 11-13 **Christmas tree festival** St Mary's
- 12 Table top sale, 10am Church pavilion
- 12 Symonds House, Christmas bazaar, 1pm Symonds House
- 12 **Music society concert, 7.30pm** St Mary's
- 15 **Historical society, 7.30pm** VH
- 16 CAMTAD, hearing help, 9-12noon Health centre
- 16 Storytime for under 5s, 2.15pm Library
- 19 Conservative's party, 7.30pm Little Linton House
- 20 Cafe church, 11.15am URC
- 24 Family carols, 5pm St Mary's
- 24 Midnight mass, 11.30pm St Mary's
- 24 Family celebration, 10.30pm URC
- 24 Midnight communion, 11.30pm URC

JANUARY

- 5 **WI. 7.30pm** VH
- 7 Parish council meeting, 8pm CC

KEY: CC Cathodeon centre, HC health centre, LH Linton Heights school, LVC Linton village college, RG recreation ground, SC sports centre, URC United Reform church, VH village hall

Library times: Monday Closed; Tuesday 10.30am-1pm, 2pm-5pm; Wednesday 2pm-5pm, 6pm-8pm; Thursday Closed; Friday 10.30am-1pm, 2pm-5pm, 6pm-8pm; Saturday 10am-12noon.

Refuse collection: 7<sup>th</sup>, 21<sup>st</sup> December

Recycling collection: 14<sup>th</sup>, 29<sup>th</sup> December

## KELVIN SCHOOL OF MOTORING



DOE ADI and MIAM  
Pass Plus



Instructing for 35 years!

For bookings  
01223  
892263



16 Back Road  
LINTON

## Now you can learn SPANISH

with an experienced tutor, at your own pace, in the comfort of your own home.

SUSAN HODGES  
Tel: 01223 891521  
Email: sjhmac2@yahoo.co.uk

## JUSTIN PEARSON

Reliable, High Quality  
**Painter & Decorator**  
for Interiors & Exteriors  
Free Estimates  
Tel 01223 565310  
Mobile 0775 2469130

## HOUSE & GARDEN MAINTENANCE

Quality Painting and Decorating Service

Les Westlake  
Mobile: 07929 501101  
Tel: 01223 892866  
leswestlake@aol.com

## B Haylock

Wood Flooring & Carpentry

Supply and installation  
Free quotations

Home viewing of samples

Mob: 07734057520  
Tel: 01223 890418

## the flower boutique

61a high street, Linton  
01223 891740

The freshest seasonal flowers for your home, friends and celebrations. Bespoke design service for weddings and funerals.

www.theflowerboutiquelinton.co.uk



# THOUGHTS FROM THE GRANTA RANTA

The opinions expressed in this article are not necessarily those of the LN team. WELL – it seems like the hunt for a new home for the police station must have finally come to an end – it very much looks like it's going to be the lay-by at Tower View – what a result...!

Fantastic news for the local area as our insurance premiums must have already dropped substantially given the regular police vans and cars spending extended periods parked up here at all times of the day and night. A little inconvenient for most of us living here but I suppose we'll have to learn to live with it if it's going to be such a cash benefit in the long run.

Of course not only are we fantastically served with an almost ever-present police presence – we must also be the luckiest part of the village with regard to paramedic and ambulance service – again very nearly daily attendance. They could almost start offering a new NHS service– just turn up with your niggly aches and pains and get sorted in the back of an ambulance as it's here anyway instead of out saving lives in motorway pile-ups or attending people in desperate need of help.

It does seem a shame though that not everyone in the village and surrounding area has the benefit of this constant service – in fact it seems a shame that this service is not available for everyone in the UK – it seems that only lucky people get this sort of treatment and Tower View residents are those lucky few.

Perhaps we could organise a 'come and share in the joy' type of event where we could invite the rest of the village over to benefit from the services on our doorstep.

It includes having your own policeman to put out your wheelie-bin – what more could you want from your local police service? Solving serious crime or even tackling 'low level' stuff, I hear you say – no way – sorting out my Monday morning smelly bin is definitely the way forward.

## Save our Lothbury centre

AN appeal to raise £650,000 has been launched in Weston Colville. The funds are needed to purchase the former school building, the Lothbury centre.

The Lothbury centre currently offers weekly classes and Saturday workshops on a range of arts activities and numbers are kept deliberately low to allow as much one-to-one work as possible. In addition to this there are talks, day schools, exhibitions and cinema evenings. Anyone who has been to the Lothbury centre knows that it has a lovely ambience, but its future is uncertain.

Milton based charity Inspire (wellbeing through arts), which runs the current programme of events, has the ambition to develop the building as a unique arts and health centre, providing various arts therapies for those with health difficulties and disabilities to improve their quality of life. Funds are urgently needed to purchase the building so the vision can be realised.

Inspire is appealing for letters of support and donations, big or small, to help the fundraising. To date £5,000 has been raised so there is a long way to go before this valued community facility can be saved.

For more information please contact me Rachel 441106 or e-mail rachel@inspire.org.uk



**CHRIS ABRAMS**  
CARPENTRY & BUILDING SERVICES

A high quality and competitive service offering you the skills and experience to help you maintain, improve or extend your home.

Tel: 01223 897236 Mobile: 07931 685774

## Benten & Co.

Chartered Certified Accountants

We are a friendly, well established firm, large enough to deal with most accountancy and taxation matters.

Please telephone for an initial consultation (without obligation)

Abbey House, 51 High Street, Saffron Walden  
Telephone 01799 523053  
www.benten.co.uk

## Singing Lessons

**Sarah Rosewell**  
BA (Hons) Music

Individual singing lessons available for all ages and abilities

Whether towards exams or purely for pleasure

\* CRB Checked

\* Based in Linton

For more information contact:

Sarah on 01223 894861

Email: sarahrosewell@hotmail.com

## NRS CARPETS



HOME SELECTION  
FREE MEASURING & ESTIMATING

All types of flooring available

Tel: 01223 893634  
Mobile: 07885 173113

# Linton fireworks, what you don't see

THE fireworks were splendid again this year and it seemed that the barbeque helpers had some of the best standing room on the field – a perfect view of the fireworks, looking straight over the heads of about 4,000 people.

Did anyone make a video please? I have only just learned that the team who set and light the fireworks don't see the results of their handiwork.

While admiring this year's display organised by Phil Stratton, Alistair Forbes, Richard Crump and Trevor Golding, Richard Creek, who has been a major player in the fireworks lighting team with Ian Blackman, was a stand-in this year. Richard explained that the team all get on with the job and keep their heads well down to avoid the constant smoke and falling debris.

Manufacturers Essex Pyrotechnics Ltd of Newport supplied approximately £3,600 worth of fireworks for visual air display. They insist that everyone involved in setting off the fireworks must attend their hour-long safety course each year. They can supply hard hats, full eye protection, ear defenders – all mandatory equipment – although Linton has a set of their own. They also recommend the fire lighters wear gloves, but Richard says



Part of the spectacular display that many enjoyed this year  
Picture by Emily King

he prefers to be able to feel the fireworks.

The firefighters' course is only a part of the planning for this amazing annual village event. Well done to the huge team of volunteers involved, which should once again raise funds for Linton infants' school, the Heights and the village college.

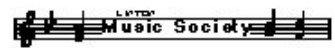
Kate France 891602

## The Classic Buskers bring Christmas spirit to Linton



The famous Classic Buskers in a comical pose bodes well for a fun concert

Picture by Eric Richmond



CONTINUING its 50<sup>th</sup> anniversary season, the Linton music society is delighted to present its Christmas show – a concert by the famous Classic Buskers, a much-loved Cambridge institution. The Classic Buskers are Mike Copley (founder member, who plays over 40 musical instruments) and Ian Moore (the brilliant accordion-player who, as Ian de Massini, directs the highly acclaimed Cambridge Voices).

The Classic Buskers' Christmas programme is strictly a carol-free zone, with all kinds of music including Tchaikovsky's *Nutcracker*, Vivaldi's *Winter Concerto*, Beethoven's *Choral Symphony* and works by Corelli and Handel, along with other seasonal numbers, but the

Buskers believe that carols are best left to choirs!

The concert takes place at 7.30pm on Saturday 12<sup>th</sup> December, at St Mary's church, Linton.

Tickets, costing £10, £2 for students, and £22 for a family ticket (2 adults and 2 children) are available at the door, or in advance either by telephoning 893480 or from Sweet Talk News, 77 High Street.

We welcome new members to the Linton music society; why not consider joining? There are many benefits; for information about membership, please contact Dr Bruce Conochie, 894460.

Further information about all concerts and the Linton music society is available by visiting [www.lintonmusic.org.uk](http://www.lintonmusic.org.uk)

Gill Lee 893485

## Plant the right plant, or else...



GARDEN designer and lecturer Hilary Thomas visited the gardening club and imparted a wealth of

advice on making our gardens more low maintenance this month. The evening started with a chance for members to bemoan the areas of their gardens which cause most work, which Hilary then listed on a slide before addressing our concerns in turn.

Even the slides of high main-

tenance problem areas were beautiful in the presentation that followed, showing how easy it is to create a feature without realising the consequences. We were reminded to plant the right plant in the right place in order to avoid unnecessary work and headache when new acquisitions don't thrive.

Hilary then presented a host of examples of shrubs that would give stunning results over many months of the year with minimal fuss. This was

followed by examples of long flowering herbaceous plants to tempt us away from the ritual of planting up annual bedding. Great ways to edge lawns were offered with strips of metal, plastic or paving slabs preventing the need to trim edges as the mower can go right up to them. I hope Hilary's tips will help us to spend more of next summer enjoying our gardens rather than always working in them!

Our next meeting is on 8<sup>th</sup> December when Geoff Hales'

travelling theatre will present The Chinese Gooseberry Man about the adventures of plant hunters. This will be followed by a chance to start the festive season with mulled wine and mince pies; please bring along a glass to join in! Any donations of mince pies would be most appreciated. We will start at 7.30pm in the village hall and offer a warm welcome to all who would like to join us.

Kirsten Newble, 892425  
lgcsecretary@yahoo.co.uk

## Chapel

Independent Financial Advisers

SPECIALIST ADVICE ON

Pensions - Investments - Mortgages - Protection  
Personal Financial Planning

FREE Initial Consultation & Without Obligation



**Ian Cross DipPFS**  
01223 892821

email: [Chapelifa@btinternet.com](mailto:Chapelifa@btinternet.com)

De-Salis House, 6 Hillway Linton, Cambs, CB21 4JE

A Member Of Sesame limited Which is Regulated By The Financial Services Authority  
YOUR HOME IS AT RISK IF YOU DO NOT KEEP UP THE PAYMENTS ON A MORTGAGE, OR ANY OTHER LOAN  
SECURED UPON IT. WRITTEN DETAILS ON REQUEST

## The Crown Inn, Linton

freehouse, restaurant & accommodation

“HAPPY HOUR” 5.30- 6.30pm Monday-Friday  
Fish & Chips Mondays 5.30-9.30pm Eat in or take away  
Pudding Club - Last Wednesday evening in every month (booking advisable)  
Bargain Lunch - Order a main course and get a pudding for free.

We have a great selection of fine wines and real ales you can enjoy in a relaxed atmosphere.

So come along and enjoy the warm welcome you will receive.

Check out the Christmas menu on our website  
[www.crownatinton.co.uk](http://www.crownatinton.co.uk)

11, High Street, Linton, Cambs Tel 01223 891759

## GARAGE DOORS

SERVICED-REPAIRED REPLACED  
Spares for all makes

Free Estimate, Brochures and Advice  
Steel – GRP – Timber  
Sectional single or double skin  
Roller Doors

A.B.C. Garage Door Systems  
Telephone 01223 893798  
or mobile 07774 499537  
[www.garagedoorsabc.co.uk](http://www.garagedoorsabc.co.uk)  
email@garagedoorsabc.co.uk

## KJL Roofing

All roofing repairs, lead-work, renewal of pitched or flat roofs

New guttering, repairs/unblocking  
Free estimates before any work commenced

25 years + Experience  
Tel: 01223 892542  
Mob: 07958 618440

## BED AND BREAKFAST

BAKERY COTTAGE  
WEST WRATTING  
CAMBRIDGE  
CB21 5LU

also  
Cottage and Converted Barn to rent for holidays, weekends and short breaks, sleeping 6 and 4 people

Tel Carol on  
01223 290492  
07860 810689



\* OFSTED Registered & Inspected

\* Member of NCMA

3 months - upwards  
• BREAKFAST CLUB  
• AFTER SCHOOL CLUB  
• School Drop-off/ Pick-up service  
Emergency or Overnight care  
Mon-Fri (subject to availability)  
Tel: 01223 894464



## Busy term for Chestnut children

CHESTNUT playgroup has had a busy start to the autumn term, welcoming many new children and families as well as a good proportion returning from last year. This term the children have enjoyed trying Indian food whilst celebrating Divali, mixing up gloop for Halloween spells and building a Jack in the Box guy for bonfire night. Current topics include space, for which the children have made space helmets and rockets and various craft activities in preparation for Christmas.

We hosted a very successful Halloween disco on 31<sup>st</sup> October, which was attended not only by children from the playgroup but many others from the village. Good fun was had by all with witches,

wizards and spiders turning up for dancing and hot dogs. Thank you for the support which helps our playgroup to maintain and replace equipment.

Fifth December sees our annual Christmas fair in the village hall from 2-4pm. There will be crafts for children, other stalls and refreshments and of course the obligatory visit from Father Christmas. Please come along and enjoy the fun.

We have places available for September 2010 intake onwards. If your child is approaching 2½ and would like a place at Chestnut playgroup please contact our admissions officer, Karen Graves, on 891416.

Wendy Hine, secretary  
894788

## Tales of National Service after hot fish and chips

THE ACES' 12<sup>th</sup> November event was very well attended – the pavilion was full! We had updates from “e-cops” and news of various frauds and scams, to keep us alert to the wicked world. Then we had a raffle, which was a great success, and are most grateful to all who gave prizes. The fish and chips lunch from “Chippy’s” arrived hot and really tasty after a hair-raising sprint....

Our speaker, Roy Petter, told tales of life in National Service – Private Petter on parade. Whoops! I had demoted him and beg his forgiveness; he was actually a sergeant...and in case you can't quite see him on a parade ground bellowing at his troops, he was in a more refined post in the Education Corps. We started with a quiet moment recalling Remembrance Day, lost friends and thoughts of current conflicts. However, Roy soon lifted our spirits with his gentle humour and tales of mishap and merriment in the army – the story of fire fighting and buckets was splendid... and whatever happened to his helmet and its net? Roy saw many postings in UK and Germany, and had adventures in them all. Life must have been much jollier when Roy was in the company.

The next event is an outing to Bury St Edmunds, on Wednesday 9<sup>th</sup> December, leaving the Dog and Duck at 9.30am, picking up at the corner of Chalklands and Back Road, then at the fire station. Bury has excellent shopping, a market, many good places to eat, as well as historic and quaint places to explore. So, plenty to do and see, and we will take the scenic route.

Call Enid on 891069 or Anne/Sue on 891001, to book and let us know if you need a lift. All of our seniors are invited to ACES' events, and it has been good to see so many new faces at the recent meetings – more please!

Enid Bald

## Busking for Children in Need



Children in spotty outfits enjoy the coin picture as the buskers perform

Picture by Roger Lapwood

A FIRST time venture by some talented musicians/singers added to the fun of Children in Need day at the infant school on 20<sup>th</sup> November.

Some of the pupils had given £1 to dress in spots, just like Pudsey, and there was a guess-the-baby photo competition, also at £1 a go.

Assembled in the gazebo, the buskers entertained everyone at the morning and afternoon sessions. They were the Rev Dr Stephen Griffiths (ukulele), his wife Jo (ukulele and percussion), Hayley and David Donnan and Bill Bickerstaff all parents playing ukuleles and parent Phil Kirkman on bass guitar and trumpet.

In very good voice, they performed songs with which the youngsters could join in and by the end of a damp morning session an inclusive total of £235 had been reached.

During the unseasonably bright and warm afternoon more coins were added to the coin picture in appreciation. The range of songs from this happy band of minstrels was eclectic, from *I've got a brand new combine harvester* through to *YMCA*, which had the children dancing and doing the well-known actions.

When I left they were *Rocking all over the world* and the group intended playing until everyone had had enough (or as one of them said; “until the pub opens”).

The final total raised for Children in Need was a wonderful £334.30.

Congratulations to all concerned for a grand effort.

LNT

## The Anderson Trust could help you

THE Charles and Mary Anderson Benefactions (Anderson Trust) welcomes applications from groups or individuals for funds to support projects that fall within the remit of the trust. Anyone who lives in Linton, or comes to Linton regularly for a specific purpose, may apply for a grant.

Normally, there is between £7,000 and £8,000 to distribute, depending upon the income received from the investments available to the trust during the year.

A detailed breakdown from last year's applications round was published in the Linton News earlier in the year. Please contact David Parry-Smith, chairman of the trustees, on 894715 for further information or see posters.

The trust is a charity and we do need to make enquiries of all applicants regarding their current financial status – generally a brief statement of major categories of income and expenditure during 2009, along with any reserves is sufficient. Complete sets of detailed financial accounts are not required.

Applications accompanied by a simple budget for the project, showing how funding from other sources may complement the proposed Anderson Trust grant greatly assist the trustees in making decisions. The deadline for receipt of applications at The Copse, 25A Back Road, Linton CB21 4LG is Thursday 11<sup>th</sup> February 2010. Email applications to [Anderson@parry-smith.co.uk](mailto:Anderson@parry-smith.co.uk)

David Parry-Smith, 894715



### Opportunity awaits

We provide a professional and friendly recruitment service to Haverhill and the surrounding villages. If you are looking for **short term temporary work** or if you are looking for the **next step on your career ladder** then call us today or email your CV to: [jobs@cremrecruitment.co.uk](mailto:jobs@cremrecruitment.co.uk)

**www.cremrecruitment.co.uk**

Contact Colin Saunders or Tom McKenzie  
on: 01440 708833

- ⇒ Industrial
- ⇒ Administration
- ⇒ Secretarial
- ⇒ Accounts
- ⇒ Sales
- ⇒ Customer Service
- ⇒ Engineering

### Made to Measure

## CAPRI BLINDS

\* Verticals \* Roman \* Roller \* Pleated  
\* Venetian \* Wooden

**CALL NOW FOR**  
free quotation - free measuring - free fitting  
*Awnings supplied and fitted from £350*

**Tel: 01223 894020**  
[www.capriblinds.co.uk](http://www.capriblinds.co.uk)

**FREE COMPETITIVE ESTIMATES**

## Watkins Joinery



- FITTED KITCHENS / BEDROOMS / WARDROBES
- CABINET MAKERS
- BESPOKE JOINERY
- DOORS / WINDOWS / STAIRS
- WOODEN FLOORING
- CONSERVATORIES
- EXTENSIONS / REFURBISHMENTS

20 YEARS' EXPERIENCE  
INSURANCE WORK  
UNDERTAKEN

**Tel.: 01223 890600 Mobile: 07802 885390**  
[colin.watkins@keme.co.uk](mailto:colin.watkins@keme.co.uk)

### Reliable Local Builder

From conversions to plastering, renovations to tiling and decorating-

No job too small

Tel: 01223 290925  
Mobile 07813 070369

### LINTON PAVING COMPANY

YOUR LOCAL LANDSCAPING  
BLOCK PAVING & PATIO  
SPECIALIST.  
PROPERTY MAINTENANCE  
Int/Ext Painting, General Repairs  
FRIENDLY SERVICE.  
FREE QUOTATIONS  
Tel: Andre Jacobs

**01223 890060**  
**07765 594398**



## The Dog & Duck

63 High Street, Linton  
Tel: 01223 891257

Open all day – every day  
morning coffee, tea and pastries  
lunch 12-5 and dinner 5-11.  
Families with children are more than welcome,

**OPEN Christmas Day & Evening**  
**New Year's Eve & New Year's Day**  
Everyone welcome – Admission at managements discretion  
**Ristorante Italiano – Italian cuisine, perfect ales, superb food, great atmosphere...**

## POT POURRI (59)

### A possible ball?

A FOOTBALL consists of polygonal shapes that are made to fit together along their sides and corners without gaps. These polygons must have a certain number of shapes to meet this requirement – namely pentagons and hexagons.

A new ball is to be made consisting of hexagons and squares. Can this ball meet the same requirements regarding sides and corners without gaps? How many polygons of each may there be if the condition is met?

A simple formula can be constructed to help with the solution if a cube is used as an example from f (faces), e (edges) and c (corners) and that all corners must meet to make an angle of 360 degrees.

**Solution to No.58 – Length of a path?**  
THE problem is easy if visualization and algebra is used before using a slide rule.

Nothing need be calculated until the last step. The path width is taken as a width of 1m deliberately so that the path length is the area numerically. The proportion of the 4 path areas to the lawn is (0.828)/x where x = lawn side.

A lawn side of 2500m (say) gives a path area of 1.656%.  
Urania

## NEWS IN BRIEF...

### Fitness class for the not so fit

A FITNESS class is now being held for those wishing to become more active and mobile.

The class involves seated exercises using resistance bands with light mobility exercises and is suitable for seniors or those with mobility/balance problems. It is led by an instructor who is qualified in medical conditions. This is generally aimed at those who are GP referred but is open to all.

Interested? Join us at Hildersham village hall from 1-2pm on Tuesdays, pay on the day.

For more information please contact me.  
Vicki Green 833862

### Conservative's Christmas party

THE Linton Conservatives are holding a Christmas party at 7.30pm on 19<sup>th</sup> December at Little Linton House, Little Linton. There will be festive food and drinks and a surprise auction. Gifts to auction will be most welcome.

Tickets and further information from me.  
Bel Griffiths 894149

### Who looks after the carers?

DO you look after someone? Who looks after you? Let us! Come along to the group for a break, a cup of tea and a chat. Our next meeting will be from 2-4 pm on Thursday 7<sup>th</sup> January at Linton village hall. Do come and join us.

### New hours at the post office

LINTON post office and general store now has its own internet site at [www.lintonpostoffice.co.uk](http://www.lintonpostoffice.co.uk)

The site features opening hours, post office products, shop information and much more.

Our new opening hours are from 8.30am every day and we are open lunchtimes on Monday, Tuesday, Thursday and Friday.


The postmaster is Mark Arnold and he can be contacted by telephone on 894348.

### Spring into action

WE are now taking enrolments for the spring term for adult education classes at Linton and Sawston village colleges. Classes start week commencing 11<sup>th</sup> January 2010.

If you would like to enrol or find out more information, please visit our website [www.bepartnership.org](http://www.bepartnership.org) [www.bepartnership.org](http://www.bepartnership.org) or email [community@sawstonvc.org](mailto:community@sawstonvc.org) or telephone 712424.

We look forward to welcoming you in the New Year.  
Sue King



### Little Hands Nursery School

Linton & Bartlow

“Little Hands”, recently judged “OUTSTANDING” in 7 areas by Ofsted, offers Morning, Afternoon, Lunch & Late Stay Sessions from 9.00AM ‘til 4.00 PM during term time for all children aged between 2 and 5 years. Pre-School sessions (to prepare our older children for infant school) are available and Holiday clubs (for 2 to 8 year olds) run during all the main school holidays. A high staffing ratio ensures quality of care so join us at Three Hills Farm, Bartlow to see what “Little Hands” has to offer you and your child


For further information please contact either  
Marion : 01223 897945 (school time) or Jane : 01223 503972 (other times)

## Small Gifts

Watch batteries and straps fitted while you wait. Jewellery repairs including sizing and polishing.

All repair work carried out on the premises by a professional with 40 years experience.

We stock a selection of:  
Silver Jewellery • Photo Frames • Collectables • Toiletries • Greeting Cards • Gift Wrap



61 HIGH STREET, LINTON, CAMBRIDGE, CB21 4HS  
TEL: 01223 894225



## Witches and interlopers and the planting of new oak trees

THERE'S an interloper in our village! It's the giant turkey oak just before the entrance to the Pocket Park or Leadwell Meadows as it used to be known. Turkey oak trees were introduced during the early 18<sup>th</sup>C and host a parasitic wasp affecting our native English oaks. What's the difference? Turkeys have more pronounced curvy leaves and a furry acorn cup. Our village tree warden, Susan Anderson, introduced us to this giant tree at the beginning of our very informative guided stroll through the Pocket Park, a series of three riverside meadows. Previously owned by Pembroke college, it was given to the parish and is now maintained as a natural area rich with flora, fauna, native trees and tall willows and can be enjoyed by all. Even terrapins! Dog walkers beware – one village dog thought he was 'peeing' on a stone, until the stone took offence and snapped at him. Some of you will have heard of the saga of the Linton phantom tree planter – trees magically appear tied to tall posts with old stockings – there's a phantom rowan by the gate in Pocket Park. Superstition tells us rowans keep the witches away. No witches in the WI then. I harvested a bumper crop of

delicious wild mushrooms and others, sloes for their gin.

At the November meeting, Bev Briggs, a personal shopper, told us about her work. If you need a new outfit for a special occasion or are fed up with all those old, unused clothes in your wardrobe she will come to your rescue. She will even weed your wardrobe. Bev is for hire. Building a picture of you, she does a pre-shop looking for things to fit your lifestyle, priorities and budget. You don't trudge around shops getting despondent; she does that and loves it. Then you both do the actual shop. Everything is brought to you to try, from clothes to accessories, ensuring colours enhance your features, wobbly bits are subtly disguised and your body enhanced.

The strolling group meets at the Dog and Duck, at 10am Friday 11<sup>th</sup> December for an historical walk around Linton.

The next monthly meeting should be interesting. Angie Wood will be talking about 'The history of the Salvation Army.' Visitors are very welcome. We meet is at 7.30pm on Tuesday 5<sup>th</sup> January in the village hall.

FOLLOWING our visit to the Pocket Park, June Bunn and Ann Simpkin, accompanied by Susan Anderson, planted two young oak trees. Luckily the ground was soft after recent rains which made the task easy.

The trees were originally acquired in 2008 and have been nurtured since then by Susan. Everyone who attended the 2008 WI annual general meeting in Liverpool was given an oak sapling, donated by The Woodland Trust and Sainsbury's.

The WI are planting for the future and helping to bring



Haven't we done well?

Picture by Ron Pitkin about a greener environment. There will now be hundreds of young oak trees throughout the British Isles that have recently been planted by hundreds of WI women. What a wonderful thing for our future generations.

Trysha Hunt 894533

## All creatures great and small



Dave Turner shows two young customers around his new store

Picture by Elite Wedding Photography

OCTOBER was an exciting, busy month for Linton couple Dave Darling and Claire Turner when their new pet supplies store opened for business at The Grip industrial estate.

Tails 'n' Scales is a large store, taking care of every pet owners' needs. They stock a large range of feeds, bedding and toys for animals large and small. They cater for keepers of common pets such as cats, dogs and birds, and also the more unusual.

For fans of small, furry, scurrying animals, they have a number of guinea pigs, gerbils, hamsters, mice and rats – including some rather interesting blue ones.

Also on display in the store are some special rabbits – the appropriately named lionhead rabbit looking particularly regal with its golden mane.

If rodents aren't to your liking, then perhaps you'd enjoy the display of fish. Dave and Claire stock cold water and tropical fish, and are able to supply quality tanks and filters to keep them in the correct environment.

The fish aren't the only creatures sporting fine sets of scales. An impressive range of reptiles are also in store, in all shapes, sizes and colours. If you peer in closely, you should be able to spot the snakes snoozing under rocks, and the electric blue gecko is a sight to behold. The vivid markings of *Lygodactylus williamsi* make it look like a toy... until it moves! The resplendent bearded dragon is in residence nearby, with its rows of spiny scales on the throat giving rise to its name. Both live and frozen feeds are available for keepers of reptiles.

Dave and Claire are keen to help with all pet owners' requirements, whether their pet walks, swims, flies, burrows or slithers. Customers are welcome to have a look around the store. They are open until 7pm Monday-Thursday, 6pm on Friday, 5pm on Saturday and 4pm on Sunday. "We thought it was important to stay open a little later than the norm during the week, to give our customers the opportunity to call in after work," said Dave.

Tails 'n' Scales are at Unit 1 Lintech Court The Grip. Telephone 893508. Website: [www.tails-n-scales.co.uk](http://www.tails-n-scales.co.uk) LNT

## Speak up and speak out



"WE just wanted to say thank you for all you have done for Beth this year. She has blossomed into a more confident and talkative young girl." A thank you like this, from satisfied parents, is feedback we take very seriously at the Academy.

Confidence and communication skills are considered two of life's greatest assets. The Helen O'Grady Drama Academy delivers a drama syllabus, designed to increase confidence and communicative ability, and to build performance skills. With 340 students currently enrolled, we run drama classes in 10 local centres, including Linton.

Here are two of our Linton students from last year, acting out the first scene from Great Expectations.

Our classes are open to all young people between the ages of 8 and 15, and run every Monday at Linton village College. We divide students into 2 age groups: Upper Primary, ages 8 to 11; and Youth Theatre, ages 11 to 15. For more information, phone Fiona Taylor on 01223 208 731 or visit our website [www.helenogrady.co.uk](http://www.helenogrady.co.uk).



Full of drama: two students in action

Nina, Carl, Amie & Louise welcome you to

# BOYZ 2 MEN BARBER SHOP

Opening Hours:  
 Monday 8:30am - 6pm  
 Tuesday 8:30am - 6pm  
 Wednesday 9:00am - 8pm  
 Thursday 8:30am - 8pm  
 Friday 8:30am - 6pm  
 Saturday 8:00am - 3pm

Special rates for senior citizens Monday to Friday

113<sup>a</sup> High Street, Linton  
 Tel: 01223 894481

## ACT UP! SPEAK OUT!

Exciting and affordable drama classes in Linton for children from 8-16yrs!

We promise our programme will:

- Develop confidence
- Build self esteem
- Empower children verbally
- Encourage attentive listening

Students will have a great time!

TELEPHONE: 01223 208731  
 and we'll tell you more about Helen O'Grady classes  
[www.helenogrady.co.uk](http://www.helenogrady.co.uk)

## Chef's corner

LIKE an exocet missile (we know it's coming but there's nothing we can do about it) Christmas is on us once again. Well, I don't know about you guys but I always struggle with ideas for stocking fillers for the friends and relatives for whom I can never seem to come up with the best ideas.

I came up with a great thought for a gift to be given on one day and consumed on the next, and the most satisfying thing is that it can be home – made by your own fair hand.

### Caramelised onion and chilli chutney

This will need a glass jam jar and lid with a greaseproof cartouche. The jar can be sterilised by running it through a dishwasher or immersed in boiling water.

- |   |                         |
|---|-------------------------|
| 7 red onions,                                 | 250 ml red wine vinegar |
| 2 shallots                                    | 50 ml balsamic vinegar  |
| 1 white onion                                 | 220 gm brown sugar      |
| 1 sweet red pepper                            | 1 cinnamon stick        |
| 1 red chilli, de-seeded                       | 2 bay leaves            |
| 2 thin slices of fresh ginger, finely chopped |                         |

Chop all the vegetables into chutney-sized pieces and fry gently for about 20 minutes until sticky and golden.

Add the rest of the ingredients to the pan and continue to cook until thick and sticky.

After allowing a little time to cool down, add the chutney to a sterilised jar, cover with the cartouche, twist on the lid and refrigerate. This will be served best about two weeks later to allow the flavours to mature.

The essential thing here is that while the sugar and vinegar gives us the sweet and sour taste along with the sticky consistency, it's the other ingredients that give us the main flavour, in this case the onion and chilli. You can use any combination such as tomato and red pepper, cranberry and ginger (great for Boxing Day cold meat platter). Fantastic with a cheese board.

Very simple, great idea, very satisfying, very different.

Don't forget you can access all Joel's recipes at [www.chefs-corner.co.uk](http://www.chefs-corner.co.uk)

## WEA visits Freemason's Hall

LINTON WEA, as part of their current Curios and Collectibles course, recently had a great day out in London. In the morning we visited the Robert Opie museum of Brands, Packaging and Advertising in Notting Hill, this was a great trip down memory lane seeing how all our favourite products have been packaged over the years.

After a great lunch at the Earl of Lonsdale, an old-fashioned London pub, we had a real treat with a guided visit around the museum of Freemasons' Hall. The building is a most beautiful art deco structure, a real eye opener. Our guide answered all of our many questions and the highlight of the visit was a chance to sit down and take in the splendour of the heart of the building, the Grand Temple itself. We came away with a different appreciation of the Masons and all the money they give to so many worthwhile

charities.

Our secretary of recent years, Leslie Allison at 87 stood down this term. At the start of one of our sessions she was presented with a certificate and letter from the chairman of the WEA Eastern Region and a bouquet of flowers from her classmates for all her years of service. Typically, Leslie will continue to be our register secretary.

The course for the spring term commencing on 12<sup>th</sup> January will see the return of an old friend Brian Jones, when he will tell us all about East Anglian Life through the centuries. Classes are from 10am to 11.45am with a break for coffee and chat. The 10-week course will include a subsidised excursion. For more details ring Andrew on 892430 or Marion on 290420.

Andrew Westwood-Bate

# Granta-Tech

Computer Support for Business and Home

Now refilling Ink Cartridges while U wait!

Online remote repair service from £10

## TOSHIBA LAPTOPS FROM £349!

41 High Street, Linton  
 Tel: 01223 893269  
 Email: [info@grantatech.co.uk](mailto:info@grantatech.co.uk)  
[www.grantatech.co.uk](http://www.grantatech.co.uk)

Paul & Sonya welcome you to

# THE PEAR TREE INN

## HILDERSHAM

Tel: 01223 891680

Traditional family run 4 star village pub with great ale, great food and great atmosphere

Menu changed monthly with special theme evenings

Join our mailing list of customers, to be updated with future events, by e-mailing us at [peartreeinn@btconnect.com](mailto:peartreeinn@btconnect.com)

Sundays Traditional Roast 12.00 - 14.30

Food every evening except Tuesday

4 Star Bed and Breakfast accommodation

## A & R PLASTERING

All aspects of plastering undertaken:

- Plasterboarding
- Rendering

No job too small

19 years experience  
 Free estimates

Linton based: 01223 890228  
 Mobile: 0774 8627920

## N. CLAXTON

Painting & Decorating and Property Maintenance

FREE ESTIMATES

Tel: 01223 893487  
 Mobile: 07724073045

e-mail: [n.claxton925@btinternet.com](mailto:n.claxton925@btinternet.com)

## CHIMNEY SWEEP

J. L. WIGHT

Guild of Master Sweeps.

Qualified advice  
 Problems solved.

Certificates issued.

[www.camsweep.co.uk](http://www.camsweep.co.uk)  
 01954 782284  
 20 Rampton Drift, Longstanton

## YOLE FARM BUTCHERS

35-37 High Street, Balsham, Cambs.

Tel: 01223 893832

Family and Catering Butcher

All produce where ever possible is sourced from our own or local farms



# A celebration of five years of youth work



The band, Solace, performs for the celebration

Picture by Henry Wilson

ON 8<sup>th</sup> November the Beacon community trust hosted a celebration of five years of Christian youth work in the village. The evening was put together by the trustees, leaders and members of Impact youth group. It was an inspiring evening giving out the message that youth work is alive and in action in our community.

The evening was packed with some music led by Adrian Rose and the young people he has encouraged and guided in their musical gifts and talents to a level that even impresses me! (I'm hard to impress).

During the evening we heard a little from each of the leaders of the Linton churches – John Hardaker, Steve Griffiths and Dave West disguised as Ivor Morgan-Jones (how impressive, as Dave sadly couldn't make the evening). The leaders of the churches shared their perspective of the youth work in the village, as did Sharon Whittle, executive officer of the Beacon. We also heard from Barry Easton who is the new St Mary's student youth worker (he is the dude in the flared jeans, flower shirt and bright shoes stuck in the 60s). He might just be the coolest person I've met. However, I am only 18.

We were privileged to hear testimonies from two young people, Bradley Potts and Jon Hunt, who attend the youth group, where they spoke about how the work has had an influence in their life. Another young person, Rebecca Savill and myself also wrote testimonies for people to take away and read. The evening still had more in store – Jess West and Rachel West (young leaders of Impact) got together with a couple of youths from the younger Impact and rehearsed for a few weeks to perform a dance in front of everyone. Lastly, I'm in a band called Solace – a band that has formed through the youth work in Linton. We performed a song from this year's Soul Survivor festival that is popular with the whole group. We finished with a song written by the band.

The evening turned out to be a fantastic celebration and was well attended, with a lot of people showing their support. The trustees of the Beacon community trust expressed their thanks to all who are helping to make the youth work in Linton a big success.

Nicole Tweed, Young Leader at IMPACT

## NEWS FROM THE TOWER

# Introducing the Linton bell-ringers

I'M sure none of you can fail to be aware of the church bells ringing out on Sunday mornings, but how many actually know how this happens? Given the excellent quality of the ringing (??) you may be forgiven for assuming that you are listening to a recording; maybe the bells of Westminster Abbey or Canterbury Cathedral I hear you say? But no, because St Mary's is blessed with its very own band of ringers whose prime responsibility is joyously to proclaim the advent of Sunday morning worship.

As the tower entrance at St Mary's is completely separate, there is little contact between the ringers and the congregation, indeed for the non worshipping bell-ringers the contact can be almost non-existent. For this reason, we have decided to try to communicate more effectively with both the church, and the village in general by including the occasional 'News from the tower' in both the parish magazine and the Linton News.

The art of bell-ringing, or the exercise which is the name it is given by the bell-ringing community, is a fascinating skill. It can be practised at a very simple, or an incredibly complex level, using arithmetical skills way beyond most mortals. Luckily you can learn to ring bells even if your ability does not go much beyond

checking your change in the supermarket.

Aside from the mental stimulation there is a very strong social side to ringing. If you are on holiday you can turn up at the local tower on either practice night or Sunday morning, and almost without exception you will be welcomed with open arms. Many of us ring regularly at other local towers and they join us from time to time. The photo, of Linton ringers and friends, was taken on our tower outing in October, when we spent the day in Essex taking in five different towers and a very nice lunch!

We also ring for special services, most recently for the installation of Steve Griffiths as our new rector and on the afternoon of Remembrance Sunday. Many of you will have heard the bells calling on Wednesday evenings with perhaps not quite the same level of proficiency. This is our practice night, when ringers of all abilities gather together to improve their skills, with varying degrees of success!

We have quite a thriving band in Linton with several new learners joining over the last couple of years, but we are always delighted to welcome new recruits. Bands ebb and flow as people join and leave, for new jobs, university etc. so we have to recruit on a constant basis to stay viable. You don't



The band on their whirlwind tour in Essex

Picture by David Richardson

have to be a member of the congregation nor physically strong – around the age of ten, children should be able to manage our lighter bells and this is a great age to start learning. Having said that, upper age is not a barrier either; the current band ranges in age from fifteen to seventy. Our biggest physical challenge, sadly, is the tower spiral staircase – if you can manage that then the bells will present no problem!

We are planning to hold an open Wednesday evening in the near future so people can come up to the tower, see what goes on and have a go. We'll let you have the details as soon as they are confirmed. In the meantime, if you are in the least interested in finding out more please contact me on 890898 and we can arrange a tower visit.

More news soon.....  
Jackie Latham, tower captain

## Information on Swine 'flu vaccinations

ALL practices, regardless of size, were issued with 500 doses of swine flu vaccine to begin vaccinating their most at risk patients. The Department of Health priority order is first to vaccinate all the under 65s in the clinical at risk groups and all pregnant women, then the household contacts of the immunocompromised and then the over 65s in the clinical at risk groups.

We received our first allocation of vaccine at the beginning of November and held our first clinic on Saturday 14<sup>th</sup> November. With only 500 doses we were unable to call all the under 65s in the at risk groups and therefore started with the younger patients first. We are expecting another delivery any day now and letters will be going out to patients over the next weeks in order of priority as laid down by the Department of Health. Delivery of the vaccine should improve over the coming weeks.

We hope to offer another Saturday clinic as this is the most effective way to vaccinate such a large number of people without impacting on the day-to-day work of the nurses and doctors. We are extremely grateful to our staff

for giving up their Saturdays, especially so close to Christmas.

The clinical at risk groups include those patients who have:

- Diabetes
- Heart disease
- Renal disease
- Liver disease
- Chronic respiratory disease
- Compromised immune system

Children under 10 and those with a compromised immune system require two doses of vaccine, but for all others it is a single dose. Seasonal flu vaccine is still available and is recommended for all those in the above at risk groups as well as for the over 65s.

If you are invited for vaccination, please telephone after 10.30am in order to leave the phones free for those with medical problems at the start of the day. It is an extremely busy time, so please bear with us.

Dr Silverman & Partners, Linton health centre

**A.J. COPELAND & CO.**  
Chartered Accountants, Linton

*Audit, Accountancy, Tax and Consultancy Services for Business and Individuals*

*Computerised Self Assessment Tax Return Service*

For FREE initial consultation phone  
**01799 506602**

Business Email: [ajcopeland@compuserve.com](mailto:ajcopeland@compuserve.com)  
ARE website: [www.ajcopelandca.co.uk](http://www.ajcopelandca.co.uk)

**Linton Complementary Health Centre**  
2b Bartlow Road, Linton

- Acupuncture, Peter White; MSc, MBAC
- Hypnotherapy, Ellie Cochran ; BSc, BSCH
- Massage, Peter White; MSc, Dip. Massage
- Osteopathy, Rachel Ives; MSc, BSc(Hons), DO
- Shiatsu, Cindy Faulkner; BA, MRSS

Telephone: 0845 430 9120  
Web Site: [www.lintonhealth.co.uk](http://www.lintonhealth.co.uk)

**Linton Community Sports Centre**  
- FITNESS SUITE -  
PERSONAL TRAINING // HOLISTIC THERAPY  
- TENNIS & NETBALL COURTS -  
- FLOODLIT '3G' ALL WEATHER FOOTBALL PITCH  
CHILDREN'S ACTIVITIES  
RANGE OF TERM, HOLIDAY ACTIVITIES & PARTIES

**01223 890248**  
Check out the latest info at: -  
<http://www.linton-sport-fitness.co.uk>

**ProClean**  
*'Your Complete Cleaning Solution'*

- \*Carpet Cleaning \*Rugs \*Stain Removal
- \*Car Valeting \*Caravans \*Motor Homes
- \*Upholstery Cleaning \*Stain Protection
- \*Floor Cleaning / Scrubbing / Sealing / Polishing
- \*Pressure Washing of Patios Paths & Driveways
- \*Domestic Cleaning \* Top Ups & One Off Cleaning
- \*Gutter / Fascia Cleaning
- \*Contract Office Cleaning (Flexible Options)

**TEL: 890433 Mob: 0777 375 8355**  
74 Bartlow Rd, Linton, Cambridge, CB21 4LY

Outside functions catered for **Chippy's** Tel: 01440 702205

**Traditional Fish & Chips**  
Serving the people of Suffolk for over 51 years

Our mobile fish & chip van is now serving the following villages

Steeple Bumpstead	Tuesday Evening	4.45-7.15
Balsham	Wednesday Evening	4.45-7.15
<b>Linton</b>	<b>Thursday Evening</b> Wheatsheaf way	<b>5.00-7.30</b>
Kedington	Friday Evening	5.00-7.30
Haverhill	Market Square Saturday	9.00-4.00

[www.chippys.co.uk](http://www.chippys.co.uk) 2 Strasbourg Square Haverhill Email [eat@chippys.co.uk](mailto:eat@chippys.co.uk)

**GEOFF NORBY** 

Reg No. 34107

**PLUMBING & HEATING ENGINEER - Estd. 1966**  
All aspects of Central Heating and Plumbing  
Boiler Service & Maintenance  
Bathroom Suites & Power Showers  
Kitchen Installations - Tap Washers

Telephone 01223 892311

**DRIVES & PATIOS**  **HOUSE EXTENSIONS**

**HOME IMPROVEMENTS** **PAINTING DECORATING**

**A & T Groundworks Ltd**

FRIENDLY SERVICE LARGE & MINI DIGGERS FOR HIRE  
Call Ashley on 01799-520298 - Mobile 07803745637





# The Derbyshire Post



ON Armistice Day this year, head-teachers faced a particular challenge. Following the deaths, over the summer, of the three remaining WWI veterans, how do we, in schools, now 'remember' events that are no longer in the memories of those living. The challenge is eloquently summed up in this quotation from the sister of a WWI veteran:

"We were told that people would remember the war for all time but I don't believe them. Soon in fifty years or so, everyone who served in the war will be dead and at some time after that everyone who has known anyone who served will also be dead.

"Then the great forgetting will begin, the fading into the landscape. The war will be levelled to a couple of museums, a set of demonstration trenches, a few names, a short hand for pointless sacrifice.

"There might be one fiery glow of remembering in the first years of the twenty first century, one final moment, before the whole thing is handed back to historians. Then in the space of a wet blink and a tear the gap in the trees will close and history, gross history, daily history will forget about us. Is this how it's really going to be?"

At Linton village college we are absolutely determined that those who have sacrificed their lives in war, and those who continue to do so for us in Afghanistan, are kept alive in our thoughts and imaginations. We must not allow these tributes to be archived and be handed back to historians. And so it was with this in mind that we decided to begin a new tradition on Armistice Day 2009.

Students had been selling poppies in earnest in the week preceding 11<sup>th</sup> November, so larger numbers of students had poppies pinned to their blazers. Morning assembly was led by Mr Brechin, head of the humanities faculty and his subject was the meaning of the poppy as a symbol of remembrance. At eleven minutes past eleven, a bell sounded and the school stopped and went silent, a silence adhered to with respect and sincerity by all. And then in the silence, from the heart of the Henry Morris lawn, a clear note rang out, as the Last Post was played by Dane Karaman from Year 11 on his trumpet. Some teachers brought their groups to the edge of the garden to hear, some listened from their classrooms and we all felt a shiver run down our spines to be reminded of the talent and bravery of the young and what a loss those lost in war are to us all.

This is how we will continue to mark Armistice Day at LVC.

Caroline Derbyshire, Principal



Classes came to a halt and the entire school fell silent as Dane Karaman played the Last Post

Picture by Amanda Clay



# The Way We Were by Garth Collard

## The ups and downs of football's early days in Linton

IN the 1930s the Linton Granta football club dominated the local soccer scene. The club had been formed in 1884 after a meeting at the Crown Inn and the landlord, W Meeks, was the vice-captain. In one of their first matches against Sawston they lost 10-0. Changing facilities were provided at the Swan Hotel and the Dog and Duck public house. Some clubs refused to come to Linton because the shared gate money raised was too little. The pitch was between Balsham Road and Back Road on what is now Rivey Way.

Also in the 1930s matches were switched to the cricket meadow. The Granta club played in the Cambridge league on Saturdays and in the Thursday league, called the Haverhill and district league.

The club failed to attract young players in the 1890s and was in a fairly sorry state by 1901. The village team needed dynamic leadership but Jim Foster and Garth Collard were not yet resident in the village!

In 1901 the Granta club re-formed with the arrival of young Tom Chalk who had been at Felstead school and played soccer for Cambridge university. He lived at 21 High Street where his family conducted their estate agent and auctioneering business. Some of his close friends came to play for Linton.

One of them was the son of Mr Grain of the Cambridge auctioneers who later married Tom Chalk's sister. Chalks were the largest auctioneers in



The Granta football team of 1901- Tom Chalk has the ball  
Picture courtesy the late Gwen Samuels



The Granta football team of 1937/38  
Picture courtesy the late Peter Taylor

the county and later took over Cheffins and Grain. The 1901 photograph shows the Granta team with Tom Chalk holding the ball. He was an outstanding attacking player so that by 1910 Granta were joint top of the Cambridge league. The Granta colours were green jerseys with white sleeves and cuffs and black shorts.

Most football was suspended for the duration of the war. The Granta club was

disbanded in October 1914 and Tom Chalk departed for the front. Soon after this local Linton people formed a new club called Linton Rovers which based its headquarters at the Dog and Duck. It took over all the Granta equipment and the grand sum of 16 shillings (80p) which is all that remained in the bank of the old club. This new team adopted a new strip of a jersey with green and white vertical

stripes but still with black shorts. The new club was led by local tradesmen including C Osmond the butcher, H Morley the builder and Tom Backler the grocer and draper.

When the war ended Tom Chalk, safely back from the front, re-formed the old Granta club and this team went from strength to strength. Spectators were now charged four old pence (less than 2p) to watch the game and in one cup match there was a crowd of over 500.

In the 1922/23 season Granta were unbeaten in the league and also won two cup finals. The star players were C Larcombe, A Morley and Cliff Smoothy. There had always been a junior team and these young players provided the basis for the victorious team of the late 1930s.

In the 1930s the team was strengthened with the arrival of the two Taylor brothers R A (Peter) Taylor and his brother "Spud" Taylor, seen in the photograph. In 1937/38, Granta won both the Saturday and Thursday leagues as well as the prestigious Russell cup.

Does any reader know where these trophies are now? Any data on the players in either picture would also be appreciated, as would any additional photographs.

Linton Rovers team fizzled out in the 1930s because Granta was so successful.

Could any reader who can provide details of the Rovers team please contact me.

Garth Collard 892395

## News from Linton and district historical society

WE have started off the new season with three fantastic sessions with topics ranging from the mystery of Horseheath Hall, through the architecture of Cambridge university to the history and bravery of the SOE (Special Operations Executive) during WWII, the culmination of all this will be a real treat when our dear friend and chairman Garth Collard returns on 15<sup>th</sup> December to give a commentary on a series of old films of Linton, kindly transferred to DVD by Roger Lapwood.

These will include film of the 1953 Coronation celebrations, the 50<sup>th</sup> anniversary in 1987 of the village college, scenes from the village fun run, a trip up to Catley Park and many scenes and memories of life and laughter at the Linton village college. This is a real must see if you either went to the college or had children there.

After what is bound to be a great night, we will wish each other a great Christmas and New Year with a glass of wine and a mince pie. So why not

come along and join us. It is still great value to join now for the rest of the year as there are still some good talks to come or simply come along and pay the £2 visitor's fee.

Andrew Westwood-Bate  
892430

### BED & BREAKFAST

Mrs Monica Clarkson  
4 Harefield Rise, Linton  
Tel: 01223 892988  
Quiet modern bungalow  
Families welcome  
No Smoking

### PLANNING APPLICATIONS

S/1631/09/F Mr Wellings, 96 High Street, Linton, Variation of condition 4 on planning permission S1593/07 to allow opening windows on the east elevation.  
S/1539/09/O Mr & Mrs Williams, Land to the north-east of Back Road, Linton. Dwelling and garage.

## MALLYON & DONALDSON Linton

Specialising in both Modern and  
Traditional building methods.

Tel: 01223 891267  
Mob: 07941 220868

All contracts finished to a high standard.  
Reliable service. Local references available.

Students 20% off THE ROOM Special Kids Prices  
37 Bartlow Road, Linton  
Tel: Pippa (01223) 890890  
OPENING TIMES  
Mon Closed Senior Citizens  
Tues 9-5 pm Tuesday & Wednesday  
Wed 9-7 pm Late opening until 7 pm on  
Thurs 9-7 pm Wednesday & Thursday  
Fri 9-5 pm  
Sat 9-3 pm

BED & BREAKFAST  
SPRINGFIELD HOUSE  
14/16 Horn Lane, Linton  
Regency house near Church,  
River views from bedrooms &  
guest lounge.  
Tel 01223 891383

CHRISTOPHER MARKHAM  
HOME & GARDEN SERVICES  
Interior/Exterior Decorating  
Fencing, Guttering  
Turfing, Garden Clearance  
Lawn & Hedge Cutting  
Decking & Patio Cleaning  
Patios & Driveways  
Call on  
(01223) 892889  
or 0797329494  
No job too small...

McKenzie & Haywards  
Garage  
MOT by appointment  
while you wait.  
Servicing, Collection & Delivery  
Service  
Units 3/4 Lintech Court  
The Grip Industrial Estate  
Linton, Cambridge, CB21 4XN  
Tel: 01223 894140  
Fax: 01223 890035

K. Jarvis  
Plumbing Services  
For all Domestic Plumbing Repairs  
and Installation  
Telephone Kevin on: 07967417686

STEVE WEBB  
Painter  
&  
Decorator  
Over 30 years experience  
CITY & GUILDS CERTIFICATES  
Montford Barn  
Horseheath  
Tel: 01223 893864  
Mobile: 07772991373

GARDENER  
N.C.H. QUALIFIED  
All garden maintenance including:  
Weeding - Mowing  
Hedge cutting - Turfing  
Garden clearance  
Shed /fence treatment  
Hard/soft landscaping  
For a friendly  
professional service  
please call:  
Darryl Tilling  
01223 892133  
or 07932 021277

L.B. CABS  
LINTON  
For all your long and  
short taxi trips  
Airports  
Weddings a  
speciality  
PHONE LINTON  
01223 892986





# Parish Council Matters

Parish Council Matters is written, edited and published by the Parish Council with the support of the Linton News Team.

## Walking and well-being, the problems with our paths

THERE never was a truer saying than the old one which tells us 'You can't please all of the people all of the time', however, as so often with these old chestnuts there is usually another one offering the exactly opposite advice such as, 'Hope springs eternal etc.', so with that in mind I will pursue my project of trying to reach a consensus of public opinion over proposed changes to our public rights of way.

These rights are centuries old but the value of our unique network of paths was fully recognised in the Access to the Countryside Act 1949 when massive amounts of legislation was involved in the rebuilding of Britain after the ravages of war. The troops had been told they were fighting for the freedom of their country and it was thought appropriate after the war to enshrine their freedom to the country by what was defined as a 'right of passage' to our public rights of way. This was to differentiate it from the 'right of access' which was eventually to achieve greater significance fifty years later in the Countryside Act 2000.

People had been campaigning for greater rights to the countryside for much of the previous century but the twentieth century heralded the recognition that for the majority of us a truly rural life-style was lost for ever and the general belief that life in our increasingly urbanised communities must be compensated for by access to a protected countryside. As G M Trevelyan wrote (1931) 'and for that reason, if for no other, the real country must be preserved in sufficient quantity to satisfy the soul thirst of the urban dweller..... It is a question of spiritual values, without vision the people perish and without the sight of the beauty of nature the spiritual power of the British people will be atrophied.'

This was stirring stuff, you have to admit and it was typical of the rhetoric which led to the establishment of National Parks, for which we must all be grateful. Sadly much of this emphasis has been diluted (or lost in political correctness) in more recent legislation so that now instead of the right to the countryside for 'spiritual refreshment' we now have need of a country walk for the purposes of 'health and well-being' which is rather more pragmatic, I think you will agree!

The Countryside Act 2000 required that every county council should compile a Rights of Way Improvement Plan (now always referred to as ROWIP) and attention was to be given to the needs of the modern walker using the rural footpaths for pleasure rather than walking to market, to the mill, or back to mother, by the shortest possible route. The councils were to encourage those responsible for these routes to make them as attractive as possible to those who used them which, in many instances, required new links in the system to make circular routes in and out of a town or village as opposed to the old traditional linear routes between communities.

Linton parish council arranged its own mini ROWIP and the review of the network of footpaths and bridleways threw up a myriad of anomalies. Our blue guide to Linton, The Story of a Market Town, contains a map full of inaccuracies and equally the O.S. maps which show the so called definitive routes as registered with the county council bear no relation to the routes we have habitually walked for decades.

In addition to creating some circular routes and routes suitable for those who cannot tackle the steeper slopes of our best walks, the 2000 Act also requires us to make some routes accessible to the less able or those with push chairs. It was pointless to start improving access without first mapping the paths accurately, to consider the problems posed by those that do not link into the system and those cross-field paths that are particularly irksome to our local landowners and farmers.

We currently have three useless bridleways which run to the parish boundary but are dead ends where neighbouring parishes have closed continuing sections. We have a bridleway not shown on any map which has been in use for over thirty years and we have a real muddle of paths over Midsummer (Grip) Meadows, the old cliché of 'many a mickle makes a muckle' springs to mind as we have all walked alongside the river for years where technically no path exists. The installation of disabled gates along Footpath 5 is a shocking waste of public money unless we remove the other stiles that have to be climbed before these are reached.

## Calling all Linton based community groups....

IF you would like to bid for parish council funding for the next financial year please contact the parish council office for an application form or alternatively download one from [www.lintoncambridgeshire-pc.gov.uk](http://www.lintoncambridgeshire-pc.gov.uk)  
All requests must be received by 31<sup>st</sup> December.

So the parish council's rights of way working group has produced a plan of the changes needed to overcome these problems. Those of you who lived in the village in 2004 will remember the previous consultation over proposed changes. Sadly this project lay dormant for several years as the county council did not have officers available to devote to it. Five years have passed and at last we are making some progress. The results of the previous consultation have been reviewed and recent meetings with landowners involved have produced fresh proposals to meet the earlier objections raised, wherever possible.



The new route south-east of Catley Park passes this trig. point

Pictures by Judy Rossiter



The new route for Footpath 9 would follow the hedgerow south-west from this gap to join with Footpath 12



The route around Catley Park would pass through this woodland glade



The new route south-east from Catley Park would join the Icknield Way through this gap in the hedgerow

There will be large scale maps detailing the proposed changes in the parish council office for three months (November, December and January) together with a file on the history of the project so far. The legal and advertising costs of this project will be divided between all involved and it is imperative that all concerned make their views known at this stage in order to forestall problems later, when costs have been incurred. By tackling all the changes to Linton's rights of way in one 'package' every part of it has to be agreed.

During the last round of consultation several local residents discussed their favourite routes or changes of preference, swapping a disused route for one in another location without appreciating the pattern of land ownership. It is necessary to bear in mind that the paths are not just a two dimensional puzzle but more of a Rubik's cube, with some paths crossing land in a variety of ownerships. There is no incentive for a landowner to agree to a new path unless he can close one he finds a nuisance and this is why I began by saying that I doubt if we can please everyone over each detail; but we need to know if there are enough improvements in the system to outweigh the disadvantages. So please consult the plans in the office or ring me (01223 891383) and let us know what you think of the proposals.

Cllr Judy Rossiter

**G. DYE & SONS**  
GENERAL BUILDER  
MAINTENANCE &  
GROUNDWORK

*Free Estimates*

39 The Grove  
Linton  
Cambridge  
CB21 4UQ  
Tel: 01223 892089  
Mobile: 07961 342887

**GLENWOOD**  
BOLTS & SCREWS LTD

[www.glenwoodbolts.co.uk](http://www.glenwoodbolts.co.uk)

SUPPLIERS OF QUALITY  
FASTENERS, FIXINGS &  
SILVERLINE TOOLS

Unit 2 Lintech Court  
The Grip Industrial Estate, Linton  
Cambridge, CB21 4XN  
Tel: 01223 892095 / 893931  
Fax: 01223 894122

Healthier, fresher, cleaner carpets.

Spring Special  
15% Discount

### Dream Clean

- Carpet cleaning and care
- Dust mite extermination and removal
- Leather cleaning and protection
- Carpets dry by the time I leave
- Free no obligation quote
- IICRC certified firm
- Happiness guaranteed - don't pay until you're happy!

Full & Current Member of NCCA

0800 6955300 or 01223 897892  
[www.dreamcleancarpets.co.uk](http://www.dreamcleancarpets.co.uk)

18 The Grove, Linton, Cambs, CB21 4UQ

INSTITUTE OF INSPECTION CLEANING AND RESTORATION CERTIFICATION Certified Firm

**PAULINE'S**  
CHILDCARE IN  
LINTON  
FOR UNDER FIVES

Ofsted registered  
Monday - Friday  
Ring for details  
01223 891890

## AJB Fencing

All types of domestic fencing - decking paving - landscaping  
Garden services  
01223 894795  
07813 070542  
[www.ajbfencing.co.uk](http://www.ajbfencing.co.uk)  
Portfolio Available

Annette's  
**Beauty & Well Being**

Try our new Sun beds and nail extension treatments  
Open Mondays seasonally and until  
7:00pm on Tues, Wed and Thur  
At The Bank House  
37 High Street, Linton CB21 4HS  
Telephone: 01223 891900

Annette Jackson vtct iihht babtac & Reiki master

## The three aaaghs

Reading, writing and arithmetic.

**Maths and English After-School Study Programmes**

Kumon can help your child progress with their maths and English studies, boost their confidence and help them shine.

With over 600 centres nationwide, it's convenient too.

Contact your local Instructor today.

**Linton Study Centre**  
Karen Tumber  
01223 893 578  
[linton@kumoncentre.co.uk](mailto:linton@kumoncentre.co.uk)

**KUMON**  
Every child can shine [kumon.co.uk](http://kumon.co.uk)

## READY TO DRIVE?

**FREE LESSON WHEN YOU BUY 10\***

- FRIENDLY, EXPERT INSTRUCTION
- INTENSIVE COURSE OPTION
- FREE PICK UP FROM HOME, WORK OR COLLEGE

Call **Alec Lavery**  
on 07767713408



# Councilminutescouncilminutescouncilminutescouncilminutes

ABBREVIATED minutes of the meeting of the parish council held at the Cathodeon centre on Thursday 15<sup>th</sup> October 2009.

**Present:** Ms E Cornell (chair), Mrs E Bald (vice chair), Dr B Cox, M Gee, A Gore, B Hammett, R Hickford, Ms T Hunt, T Krarup, J Linsdell, G Potter, Mrs J Williams and Mrs S Parry (clerk). County and district councillor J Batchelor, district councillor Mrs T Bear and Mrs K France (press) were also in attendance together with three members of the public.

**Public Forum:** Stop Linton Wind Farm (SLWF) gave a presentation. Dr Harrison reported that the appeal would start on February 2<sup>nd</sup> 2010 for two weeks and would be held at the Conference Centre, Granta Park. SLWF had engaged a barrister to act on their behalf and fund raising was taking place to support this cause. The main reasons for the local opposition include:  
 - The devastating impact on the landscape, the public rights of ways and bridle paths  
 - The blight on the conservation areas and historic listed buildings  
 - The influence of noise-induced sleep deprivation on the health of residents in the surrounding villages  
 - The aching concern over consequences to the rare breeding programme at Linton Zoo  
 - The effect of turbines on rare flora and fauna in Hildersham Wood, one of the last remnants of ancient woodland and a designated Site of Special Scientific Interest  
 - The fear the turbines might increase the accident rate on the A1307.

Jim Heathcote (SLWF) reported that a three minute clip of a film especially made as part of the marketing campaign had been sent to the Cannes Film Festival. He asked everyone to be aware that although the application had been refused locally the battle had only just begun and was by no means won. The chair thanked Dr Harrison and Mr Heathcote.

**Apologies for absence** were received from Councillors Rossiter and Urwin.

**Matters arising from the minutes of the meeting held on 1<sup>st</sup> October:** Cllr Hickford reported that the county council had been repairing a street light on the Recreation ground. At his request they had kindly removed the faulty light on the skate ramp.

Cllr Cox reported that owing to the problems with the uneven surface in the churchyard the kissing gate would be removed until the surface was repaired.

The chair requested that confirmation be sought in writing from Mr Jackson of Hundred Houses that the tree in dedication of Sgt Charter be protected during the construction period and in perpetuity.

**Report from police and consideration of policing, safety and security issues:**

The report issued by Cllr Hickford on the Anti Social Behaviour meeting was noted. Cllr Hickford reported that a resident had contacted him to praise the police following a potential distraction burglary at her home. She had said how marvellous it was that the PCSOs and PC Parkin had taken the time and trouble to visit her. The clerk will write to the Police passing on her thanks.

**Report from the county councillor:** County councillor Batchelor reported that the decision had been made by the county council to proceed with the government Transport Innovation Fund which would revolutionise public transportation in Cambridge City and South Cambs. This would eventually lead to a congestion charge being implemented in 2017.

**Reports from the district councillors:** District councillor Bear reported that she had been assured that work to change the position of the Rivey Way sign was in the pipeline although currently this department had no funds available to do this work. The district council had deemed the tree in Palmers Close not to be a health and safety issue.

**Correspondence received and for discussion:**  
 The county council had confirmed the closure of Stanton's Lane bridge on 16<sup>th</sup> and 17<sup>th</sup> February 2010 for cleaning.

With regard to a residents offer to seek funding to refurbish the pavilion, and a request for a meeting, it was resolved that the council agreed in principle to the offer to seek funding for

refurbishment. A sketch plan would be requested and following its receipt a meeting will be arranged with all interested parties.

BT had invited the council to adopt the red telephone kiosks in Rivey Way, Church Lane/High Street and High Street near Market Lane for £1 each. It was noted that the parish council would be responsible for the future maintenance to include any repairs and cleaning. Council resolved to adopt the listed red telephone kiosks in Church Lane/High Street and High Street near Market Lane for £1 each and investigate whether the kiosk at the top of Rivey Way could be moved or sold.

**LINTON PARISH COUNCIL**  
 Linton Village Hall, Coles Lane, Linton,  
 Cambridge CB21 4JS Tel: 891001

Clerk to the council – Mrs Sue Parry  
 Email: lintonpc@btconnect.com  
 Website: www.lintoncambridgeshire-pc.gov.uk  
**Office hours : Monday 9am–12noon, and  
 4–5.30pm, Tuesday–Friday 9am–12noon**  
 Or by appointment

Dates for full council meetings:  
 December 3<sup>rd</sup> 2009, January 7<sup>th</sup> and 21<sup>st</sup> 2010  
 All meetings held at the Cathodeon centre  
 following the public forum commencing at 8pm

ABBREVIATED minutes of the meeting of the parish council held at the Cathodeon centre on Thursday 5<sup>th</sup> November 2009.

**Present:** Ms E Cornell (chair), Mrs E Bald (vice chair), M Gee, A Gore, B Hammett, R Hickford, Ms T Hunt, T Krarup, J Linsdell, G Potter, Dr J Rossiter, Mrs J Williams and Mrs S Parry (clerk). Mrs K France (press) was also in attendance.

**Apologies for absence** were received from Councillors Cox and Urwin.

**Disclosure of Interest:** Cllr Gore disclosed a prejudicial interest as the chair of the trustees of the Cathodeon centre. Cllr Gore left the room during the discussion and decision on this matter. Cllr Krarup declared a personal interest as a trustee of the Cathodeon centre.

**Reports from co-ordinators:**  
 Open spaces: Cllr Bald asked that shrubs and self set bushes in the area on Back Road adjacent to the Cemetery and Chalklands be pruned and generally tidied up. This was necessary in order to finish the painting of the Cemetery railings.

Recreation ground: A request to use metal detectors on the Recreation ground had been received. Much discussion took place and as it was felt that this may set a precedent the request was refused.

Discussion took place regarding the quotation from CGM Cambridge for treatments to the cricket outfield and football pitch area on the Recreation ground. Cllr Gee proposed that the entire area from the Meadow Lane gate, river side of the path to the pavilion, be weed-killed in the spring. The proposal was seconded by Cllr Potter. A vote took place with nine votes in favour, two votes against and no abstentions. Proposal carried.

Cllr Krarup had issued a report. It was noted that the tree house had been removed at a cost to the council of £220. The tree warden will be asked to assess whether any long term damage had been done to the tree.

The block paving had been re-laid following the drainage work. Cllr Potter reported that he had visited the site during the drainage work and had noted that a 10 inch pipe from Stanton's Lane led into a three inch pipe at the manhole which had caused it to lift resulting in flooding.

Rights of way: The report from Cllr Rossiter and the correspondence from the county council Parish Paths Liaison officer, regarding the proposed re-organisation of Linton's rights of way, were discussed. The council resolved that 'the package' as offered was an acceptable deal and agreed that the consultation be sought. Main article by Cllr Rossiter overleaf refers.

Churchyard: Cllr Cox had reported that at a recent meeting of the Churchyard management working group Alan Clarkson, the advisor from the parochial church council (PCC), said that volunteers working in the Church and Churchyard were covered on insurance by the Church. Therefore the Monday gang were effectively covered by the Church insurance for the work they undertake. It was agreed to contact the secretary of the PCC to ascertain whether they had insurance for the Churchyard. The parish council policy would also be checked to determine any restrictions etc.

Allotments: Cllr Cornell reported that following membership of the National Society of Allotment and Leisure Gardeners Ltd (NSALG) their legal representative had contacted the council. Cllr Cornell reported that she had asked them if the council could 'go public' and take its plight to the newspapers as many residents were beginning to lose patience with the wait for an allotment caused by the apathy of landowners and the ineffectiveness of the district council.

**Review of Cemetery Regulations:** Several minor changes were agreed and they were to be presented for adoption at the next meeting.

**Review of Cemetery fees:** A small increase was agreed for parishioners and those for a non parishioner will be 2.5 times those of a parishioner. The new fees will be as follows:

	Parishioner	Non
	£	£
Interment of child	nil	30
Interment of adult	120	300
Grant of Exclusive Right of Burial	120	300
Burial of Cremated remains	60	150
Grant of Exclusive Right of Burial of ashes	60	150
Permission for headstone of agreed size	60	150
Permission for tablet	60	150
Additional inscription	20	50
Replacement of memorial	20	50

**Consideration of the quotations for tree works in the Cemetery:** It was resolved that the quotation from Cambridge Tree Surgery for £920+VAT to carry out the recommended works be accepted, subject to the tree warden being in agreement.

**Information regarding the Inspection Report on proposed Linton Wind Farm development:** Cllr Hickford had issued a report detailing his concerns that the review by the Highways department was not carried out by an independent consultant. He requested that the parish council write to South Cambridgeshire district council (SCDC) to express its concerns regarding the use of Atkins as their advisor. After some discussion it was agreed to investigate further to ascertain what other information had been used in reaching the conclusion that the proposed turbines would have no effect on road safety and to make comment that it was a poor example of public relations on the part of SCDC which lacked transparency.

**Creation of Children's Centre at Cathodeon site:** A report from Cllr Gore had been issued. It was agreed to grant the lease to the Children's Centre.

**New play equipment on Recreation ground:** Cllr Hammett had issued a report regarding the proposed play equipment for the Recreation ground. It was agreed to accept a grant of £5581 from Awards for All for new play equipment and to proceed with the purchase of said equipment.

**Correspondence received and for discussion:**  
 SCDC had advised the parish council to proceed with co-option regarding the councillor vacancy. It was agreed to advertise the vacancy in Parish Matters and on village notice boards.

**Note: Copies of the full minutes, reports and documents referred to above can be inspected at the parish council office.**

**Parish councillor vacancy**

There is a vacancy on the parish council for a councillor.  
 If you are interested and would like more information  
 please contact the parish council office.

**PT Carpentry & Building Services**  
 For all your building needs

- Extensions
- Loft/Garage Conversions
- Barn Conversions
- Refurbishments
- Fitted Kitchens/Bedrooms/Bathrooms

**T: 01799 584126**  
**M: 07939 568 767**  
 E: pt.carpentry@tiscali.co.uk

**HN** Heckford Norton  
 solicitors

Your local professionals for whatever legal help  
 you need in your business or personal life.

**TEL: 01799 522636**  
 18 HILL STREET SAFFRON WALDEN ESSEX CB10 1JD  
 www.heckfordnorton.co.uk

Carpentry, Plumbing, Tiling      Fencing, Decking, Gardening  
 Door / Window Replacement      Painting, Decorating  
 Kitchen / Bathroom Refitting      Flat Pack Assembly

Property Maintenance  
**Steve Jackson**  
 Service Engineer

All domestic appliance repairs,  
 15 years industry experience.      Steve Jackson  
 Very reasonable rates.      (Home) 01223 893114 / 893896  
 Quick & reliable service.      (Mobile) 07963 854653

**01223 890 965**  
 THE ONLY NUMBER YOU WILL EVER NEED  
**LINTON CABS**  
 "THERES ONLY ONE  
 LINTON CABS"

**Roses**  
 Beauty Salon  
 WEST WRATTING  
 Facials, Electrolysis,  
 Waxing, Manicures,  
 Pedicures, Massage,  
 Eyelash Tint, Ear Piercing.  
 Mobile service available  
 Rene Guinot Agent  
 Tel Carol  
 01223 290492  
 or 07860 810689

**mops**

**HAIR BY JO DENNY**  
 Women | Men | Children

**XMAS GIFT PACKS  
 AND VOUCHERS**

41 Linton High Street  
 (Behind North's Bakery)  
 t: 01223 893 285

**MOPS HAIR SALON**

**STRICTLY  
 LEARN TO DANCE**  
**BALLROOM AND LATIN AMERICAN**  
**ABSOLUTE BEGINNERS**  
 NEW COURSE TUESDAY 12<sup>th</sup> JANUARY

**THE DANCE STUDIO  
 LINTON VILLAGE COLLEGE**  
 7-8pm  
 TO BOOK CALL  
**07760 143901**  
**KEEP DANCING!**